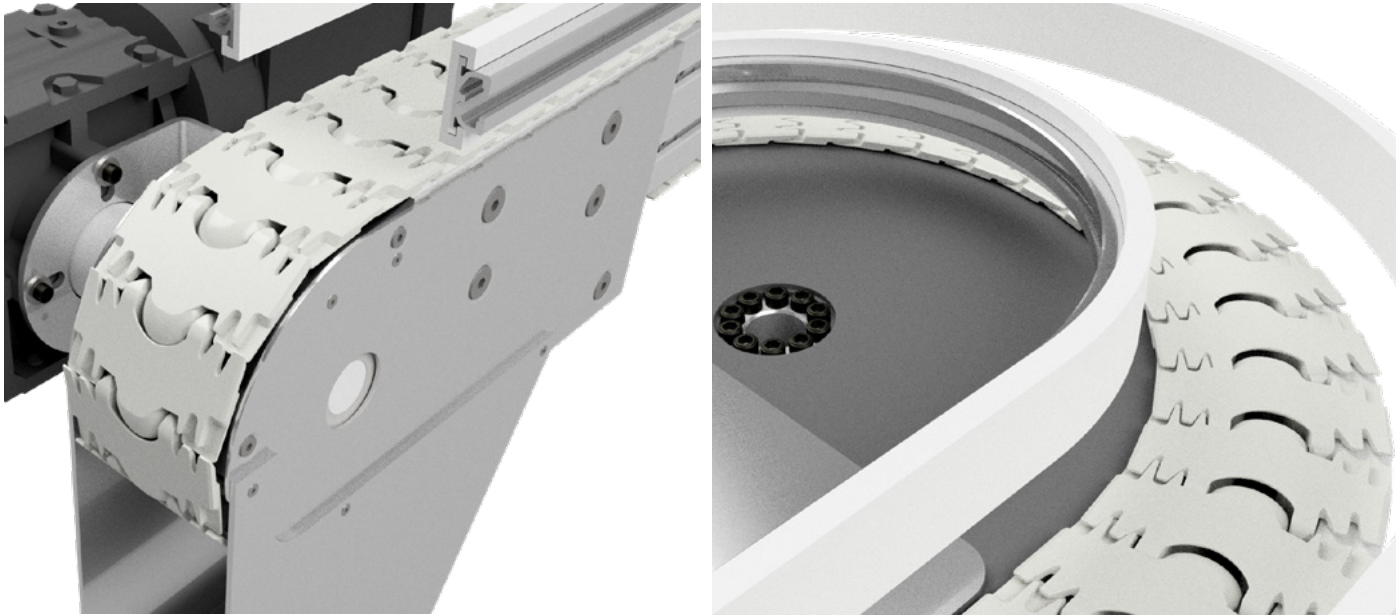


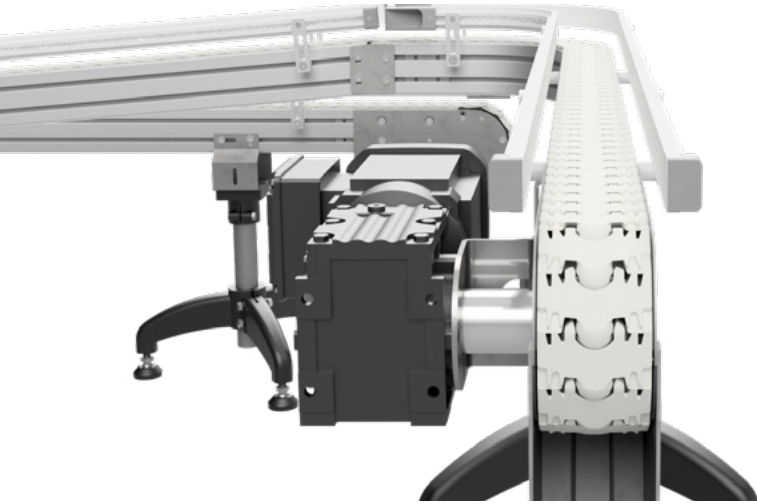
uni USC - Ultimate Safety Chain

Safety. Speed. Silence.



uni USC – a chain built for next-generation conveyor systems.

With rising demands for performance, operator safety, and system flexibility, OEMs need a chain that delivers tomorrow's performance today. That's where the uni Ultimate Safety Chain comes in.



One Chain. Multiple Industries. Endless Potential.

Engineered to integrate seamlessly into modular systems, the uni USC delivers precision, safety, and smooth performance across a wide range of light material handling applications.



- Lightweight primary & secondary packaging
- Automotive & battery assembly
- Electronics parts handling
- General light material handling systems
- Modular conveyor system platforms

When safety, product stability, and smooth transport matters, the uni USC delivers.

Features at a Glance

- **High Performance Materials**

Strong and wear-resistant

- **Plate Thickness**

4.8 mm

- **Link Pitch**

38.1 mm

- **Minimum gap between links**

Reducing pinch points

- **Excellent Flatness**

Ensures product stability during transport

- **Minimum Tight Turn Radius**

200 mm

- **Side-Driven Chain**

Ideal for endless conveyors, buffers, and alpine systems

- **Compatibility**

Fits 880 and 879 tab tracks – upgrade existing lines with ease



Safety. Speed. Silence.

Thanks to its innovative 3-part pivot system, the uni USC offers exceptionally smooth operation at higher speeds - significantly reducing vibration and noise.

The result? A more efficient line and a quieter, more stable conveying process.



Why Choose the uni USC?

- **Ultimate Safety**
Tight link spacing to protect operators and products
- **Smooth Motion**
Pivot-based design for reduced noise during transport
- **Higher Speed**
Reliable and stable at elevated line speeds
- **Flexible Integration**
Ideal for Aluminium and Stainless Steel frame modular conveyor systems
- **Global Support**
Backed by Ammega, a worldwide partner in conveying innovation

Power up your system. Don't build one from scratch.
uni USC - Ultimate Safety Chain. For those who want it all.



Discover Your Local Contacts

The local partner of choice
for sustainable conveyor belting solutions
- around the globe.



General contact information: Ammeraal Beltech

P.O. Box 38
1700 AA Heerhugowaard
The Netherlands

T +31 (0)72 575 1212
info@ammeraalbeltech.com
www.ammeraalbeltech.com



Scan the QR code
and contact your local
supplier!

