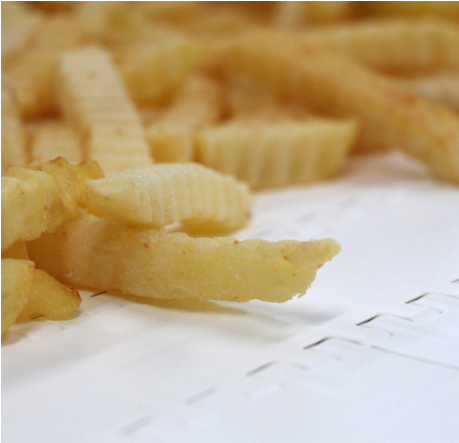


uni ULB - The Revolutionary Ultra Light Modular Belt



Driving Value in General Conveying.

uni Modular Belts provide a wide range of industries with outstanding modular conveyance solutions – now, we can offer even more.

Ammeraal Beltech is proud to present the uni ULB (Ultra Light Belt), a lightweight Modular Belt that is Food Safe. The uni ULB offers impressive performance at a remarkably light belt-weight; it's an economical alternative to heavier and more expensive belts. What's more, it's easy to operate, to maintain and to clean.

Whether it's in the Food Industry, where its hygiene and easy-clean features make it a stand-out, or in other industries where it is exceptional durability along with its fast and easy mounting that drives its appeal, the uni ULB has a unique place among belting solutions.

The new uni ULB – best and lightest in class.

The uni ULB will lighten your load and carry it too!

Why pay for more weight than you can use? Your conveying solution should give you just what you need. With the uni ULB, you can cut down on capital investment costs and power consumption while maintaining the highest standards of performance.

Revolutionary construction

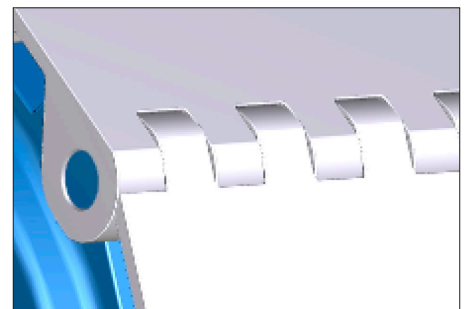
- First ultra light belt capable of carrying loads up to 1,000kg on a standard 1m width
- Lighter weight for significantly more competitive cost
- Durable design ensuring a long service life
- No tension force required during set-up or adjustments during operation for maximum running time
- More manageable to handle than standard belts during mounting and dismounting, less demand on your workforce

Food Industry favourite

- Top Food Safety features & standards, hygienic design and white and blue colours
- "Exposed pin" design for quick and easy wash-down
- Semi-closed hinge construction stops food accumulation when belt flexes at the sprocket

The Environmental Belt

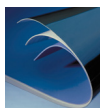
- Lighter weight – lower power consumption and a smaller carbon footprint
- Easy-clean features – less water consumption and less cleaning fluid use
- Long service life and its recyclable core materials – outstanding cradle-to-cradle credentials



The best-in-class uni-chains hinge system keeps belt maintenance simpler and easier.



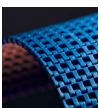
The uni ULB cleans up quickly and easily, saving water and time.



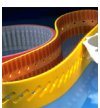
Synthetic Belts



Endless Woven Belts



Modular Belts



Engineered Belts



Homogeneous Belts



Fabrication & Service

**Expert advice and quality solutions
for all your belting needs.**
ammeraalbeltech.com

Ammeraal Beltech
P.O. Box 38
1700 AA Heerhugowaard
The Netherlands

T +31 (0)72 575 1212
info@ammeraalbeltech.com

ammega.com

This information is subject to alteration due to continuous development. Ammeraal Beltech will not be held liable for the incorrect use of the above stated information. This information replaces previous information. All activities performed and services rendered by Ammeraal Beltech are subject to general terms and conditions of sale and delivery, as applied by its operating companies.