

Teflon NI Belts for glass wool industry

AU



Founded in 1950, Ammeraal Beltech is a global market leader in the design, manufacturing, fabrication and servicing of high-quality, high-performance process and conveyor belts, available today in 150 countries. around the world.

Glass wool, also known as fibreglass, is considered one of the **most effective and environmentally friendly solutions for thermal and acoustic insulation**.

It is produced using a high-speed method, similar to the one used in cotton candy industries, capable of melting, and agglutinating, sand, sodium carbonate, dolomite, potassium, and recycled glass at 1450 °C degrees **without the risk of possible fabric tears**.

During the agglutination process, fibre flow is compacted between two conveyor belts vertically hung in a side-sandwich position.

These belts, known as **Bats Flanc belts**, suffer strong friction from scrapers, handling a constant water flow. This, and the difficulty of cleaning the belts, is a **real problem for many glass wool industries**.

Teflon NI belts were created with this very purpose: **to help you avoid the challenges** that the glass wool production process brings.

Main features

- Dimensionally stable
- Extreme lateral stability
- Non-stick surface
- Good chemical resistance
- Water resistance
- High abrasion resistance

Benefits

- Longer belt life
- Reduced maintenance costs
- High temperature resistance
- Prevents lateral bowing
- Easy to clean

Typical application

- Bats Flanc belts

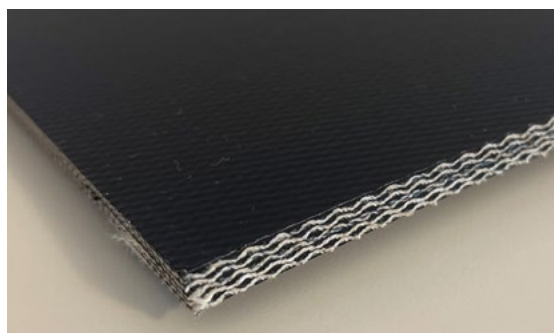
Prevent line breaks and unwanted tears with Teflon NI belts

Teflon NI belts, the brand-new belts designed by Ammeraal Beltech in collaboration with the leading industries in the glass wool sector, represent an **extraordinary cost-benefit solution**.

This new solution **will help you avoid, and above all prevent, line breaks and unwanted tears**, thanks to its **high-abrasion and water-resistant fabrics**.



Glass wool



One of the main characteristics of the Bats Flanc belts is that they work in a vertical position fixed laterally from the top by a series of bearings that accompany their sliding movement on support tracks.

During the production process, the **considerable weight of the belts** caused by the great amount of water, and **the high pressure** exercised by the long scrapers across the width of the surface, **require the bindings and the fabrics to have a very strong structure, resistant to the possible tears** that can block your production.

Ammeraal Beltech's 5 layers fabric **Teflon NI belts**, not only guarantee an **extraordinary strength**, but also **non-stick properties against chemical binders** that directly impact the belts causing transverse bowing effects, a common cause of machines breakdowns.

Technical data

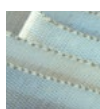
Item	Description	N. of plies	Thickness [mm]	Weight [kg/m ²]	Force elongation at 1% [N/mm]	Maximum Width (mm)	Flexing / Back flexing diameter [mm]
560246	Teflon EC 11/5 01+01 (NI) black	5	5,60	6,30	10	3300/3500	100/180

One-Stop Belt Shop

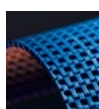
Knowing your process	Industry and product knowledge are the foundation of an innovative and service-oriented organization
All your belting needs	Ammeraal Beltech developed a wide range of belting solutions and accessories to assist the glass wool producers
Just-in-time delivery	Worldwide distribution and large service network; skilled personnel are on call to repair and install belts keeping business operations running smoothly



Synthetic Belts



Endless Woven Belts



Modular Belts



Engineered Belts



Homogeneous Belts



Fabrication & Service

Expert advice and quality solutions for all your belting needs.
ammeraalbeltech.com

Rydell Beltech
51 Bazalgette Crescent
Dandenong South VIC 3175

This information is subject to alteration due to continuous development. Ammeraal Beltech will not be held liable for the incorrect use of the above stated information. This information replaces previous information. All activities performed and services rendered by Ammeraal Beltech are subject to general terms and conditions of sale and delivery, as applied by its operating companies.

Ph (03) 8780 6000
au-vic-sales@ammega.com