

NEW

# RAPPLON® Folder Gluer Belts

## for the Box Folding Industry



### Build a better box with Ammeraal Beltech's re-engineered RAPPLON® Folder Gluer Belts for the Carton Box Industry.

Our commitment to innovation shows in our new series of RAPPLON® Folder Gluer Belts, improved to provide better performance across a wide range of applications.

With long service lives, excellent grip for paper and carton, outstanding resistance to abrasion and paper dust for hassle-free maintenance, plus the availability of EC and FDA-approved Food Grade covers for a number of applications, these new belts can boost productivity, reduce downtime and cut energy use and costs year in and year out.

#### Main benefits:

- Extended service life thanks to innovative design and engineering
- Exceptional grip for precision performance
- Reduced energy consumption
- Less belt noise
- Available in thicknesses of 3, 4 and 5.5 mm

# Innovation & Service in Belting

Available in either Classic or QuickSplice designs, RAPPLON® Folder Gluer Belts ensure precise transport and folding of carton blanks at very high speeds for nearly all applications across industry needs, including food and pharmaceutical packaging with our high-quality EC and FDA-approved Food Grade covers.

## QuickSplice design

- Safe, reliable and rapid finger splice for fast belt replacement
- Safe and easy belt tracking, even at speeds as high as 700 m/min
- Energy-saving design, up to 14% lower energy consumption compared to market standard\*
- Suitable for running in both directions
- Dimensionally stable polyester core
  - no re-tensioning required

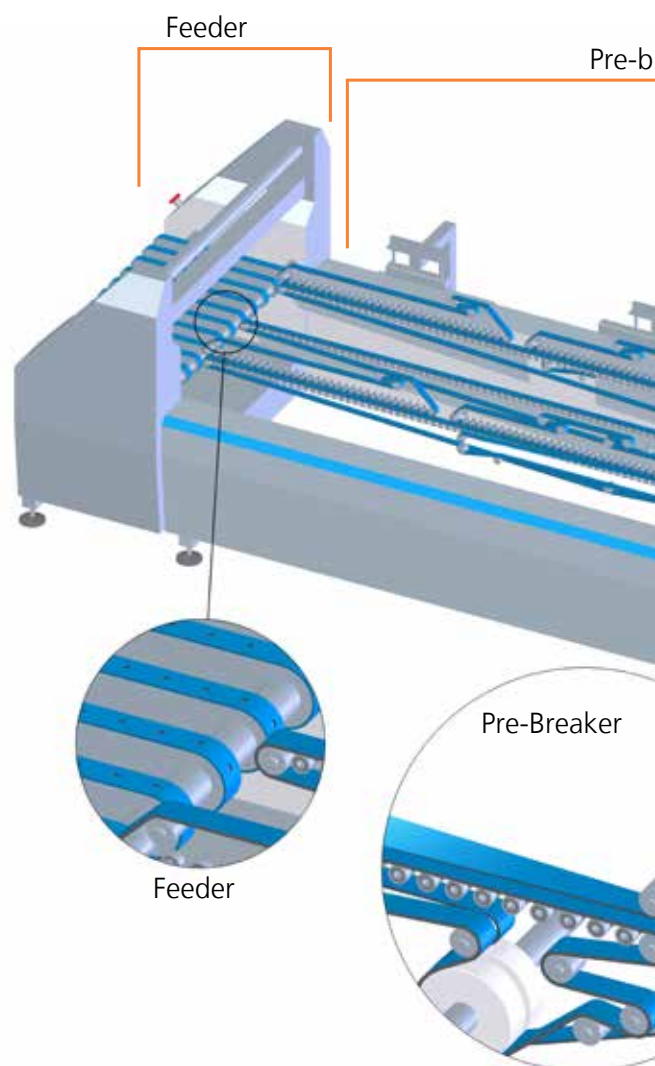
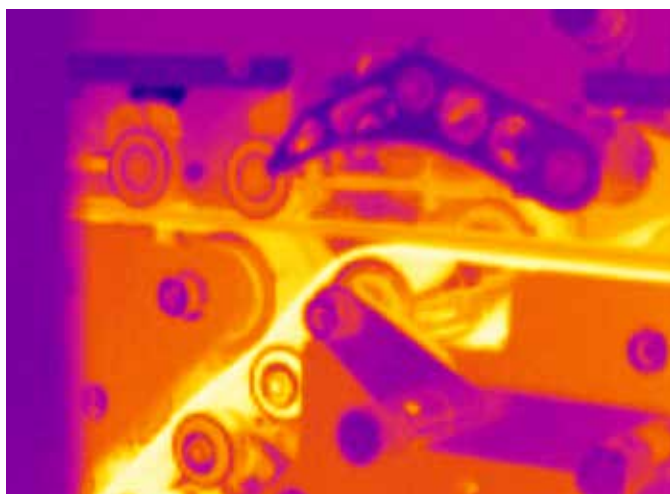
## Classic design

- Traditional splice technology with skived and glued joint
- PA foil tension member
- FDA and EC Food Grade covers
- Outstanding edge stability gives no edge fraying
- Can be used in applications with temperatures up to 80 °C



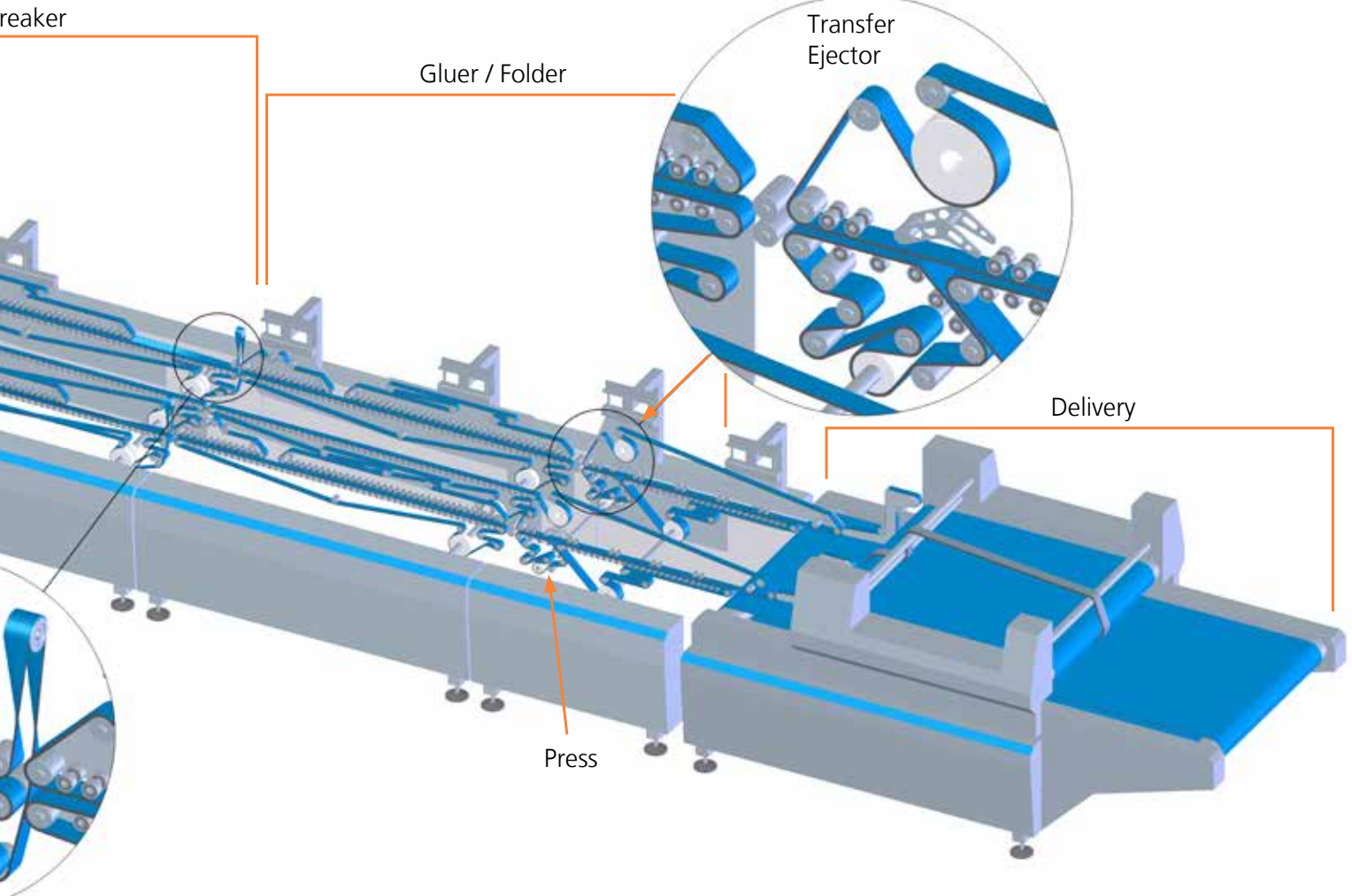
Food Grade belts comply with EC 1935/2004 and FDA standards supporting your HACCP program ISO 22000

\* RAPPLON® QuickSplice Folder Gluer Belts have the lowest energy consumption in the market compared to other belts. The innovative material combination results in less self-heating of the belts (temperatures are approximately 20% lower compared to other belts under the same conditions).



## Technical Data – RAPPLON® Food Grade Folder Gluer Belts

Item code	RAPPLON® belt description	Thickness in mm	Force / belt factor at 1% elongation in N/mm	Recommended elongation	Min. pulley Ø in mm	Temperature range in °C	Antistatic
<b>Application – Feeder Belts</b>							
Ultrafeed 500							
54705	GT S04.25 RC + NRS 040 red	6.5	4.0	0.6 – 1.0%	40.0	0 to 80	yes
<b>Application – Folder / Transport belt</b>							
54783	RAPPLON® GG S04.30 RRC FG	3.0	4.0	0.6 – 1.0%	25.0	0 to 80	yes
54784	RAPPLON® GG S04.40 RRC FG	4.0	4.0	0.6 – 1.0%	30.0	0 to 80	yes
54274	RAPPLON® GG S06.30 RRC green	3.0	6.0	0.6 – 1.0%	30.0	0 to 80	yes
54145	RAPPLON® GG S06.40 RRC green	4.0	6.0	0.6 – 1.0%	40.0	0 to 80	yes
54275	RAPPLON® GG S06.50 RRC green	5.0	6.0	0.6 – 1.0%	50.0	0 to 80	yes
54276	RAPPLON® GG S06.60 RRC green	6.0	6.0	0.6 – 1.0%	60.0	0 to 80	yes
54780	RAPPLON® GG S06.30 RRC FG	3.0	6.0	0.6 – 1.0%	30.0	0 to 80	yes
54781	RAPPLON® GG S06.40 RRC FG	4.0	6.0	0.6 – 1.0%	40.0	0 to 80	yes
54782	RAPPLON® GG S06.55 RRC FG	5.5	6.0	0.6 – 1.0%	60.0	0 to 80	yes
54659	RAPPLON® GG E10.30 RRQ FG	3.0	10.0	0.4 – 0.6%	30.0	0 to 60	yes
54660	RAPPLON® GG E10.40 RRQ FG	4.0	10.0	0.4 – 0.6%	40.0	0 to 60	yes
54662	RAPPLON® GG E10.55 RRQ FG	5.5	10.0	0.4 – 0.6%	60.0	0 to 60	yes
<b>Application – Transfer section</b>							
54559	RAPPLON® UV E06.20 FQ	2.0		0.4 – 0.6%	20.0	0 to 60	yes
<b>Application – Press and Delivery Section</b>							
54525	RAPPLON® TG P03.12 FC	1.25	3.0	0.2 – 0.6%	25.0	0 to 80	yes
54265	RAPPLON® TG P04.20 RC	2.0	3.8	0.2 – 0.6%	25.0	0 to 80	yes
54266	RAPPLON® TG P07.30 RC	2.9	7.0	0.2 – 0.6%	50.0	0 to 80	yes
57239	RAPPLON® TG E18.20 P5C	1.9	18.0	0.2 – 0.6%	60.0	0 to 80	yes



## Want to know more? Contact us

Get in touch with your nearest Ammeraal Beltech sales office or visit [www.ammeraalbeltech.com](http://www.ammeraalbeltech.com) to locate your local service centre, and we'll be glad to help.

# Local Contacts

### Australia

T +61 3 9555 7922  
info-au@ammeraalbeltech.com  
www.rydell.com.au

### Austria

T +43 171728 133  
info-de@ammeraalbeltech.com  
www.ammeraalbeltech.at

### Belgium

T +32 2 466 03 00  
info-be@ammeraalbeltech.com  
www.ammeraalbeltech.be

### Canada

T +1 905 890 1311  
info-ca@ammeraalbeltech.com  
www.ammeraalbeltech.com

### Chile

T +56 2 233 12900  
info-cl@ammeraalbeltech.com  
www.ammeraalbeltech.cl

### China

T +86 512 8287 2709  
info-cn@ammeraalbeltech.com  
www.ammeraalbeltech.com.cn

### Czech Republic

T +420 567 117 211  
info-cz@ammeraalbeltech.com  
www.ammeraalbeltech.cz

### Denmark

T + 45 7572 3100  
info-dk@ammeraalbeltech.com  
www.unichains.com

### Finland

T +358 207 911 400  
info-fi@ammeraalbeltech.com  
www.ammeraalbeltech.fi

### France

T +33 3 20 90 36 00  
info-fr@ammeraalbeltech.com  
www.ammeraalbeltech.fr

### Germany

T +49 4152 937-0  
info-de@ammeraalbeltech.com  
www.ammeraalbeltech.de

### Hungary

T +36 30 311 6099  
info-hu@ammeraalbeltech.com  
www.ammeraalbeltech.hu

### India

T +91 44 265 34 244  
info-in@ammeraalbeltech.com  
www.ammeraalbeltech.com

### Italy

T +39 051 660 60 06  
info-it@ammeraalbeltech.com  
www.ammeraalbeltech.it

### Luxembourg

T +352 26 48 38 56  
info-lu@ammeraalbeltech.com  
www.ammeraal-beltech.lu

### Malaysia

T +60 3 806 188 49  
info-my@ammeraalbeltech.com  
www.ammeraalbeltech.com

### Netherlands

T +31 72 57 51212  
info-nl@ammeraalbeltech.com  
www.ammeraalbeltech.nl

### Poland

T +48 32 44 77 179  
info-pl@ammeraalbeltech.com  
www.ammeraalbeltech.com

### Portugal

T +351 22 947 94 40  
info-pt@ammeraalbeltech.com  
www.ammeraalbeltech.pt

### Singapore

T +65 62739767  
info-sg@ammeraalbeltech.com  
www.ammeraalbeltech.com

### Slovakia

T +421 2 55648541-2  
info-sk@ammeraalbeltech.com  
www.ammeraalbeltech.sk

### South Korea

T +82 31 448 3613-7  
info-kr@ammeraalbeltech.com  
www.ammeraalbeltech.co.kr

### Spain

T +34 93 718 3054  
info-es@ammeraalbeltech.com  
www.ammeraalbeltech.es

### Sweden

T +46 44 780 3010  
info-se@ammeraalbeltech.com  
www.ammeraalbeltech.se

### Switzerland

T +41 55 2253 535  
info-ch@ammeraalbeltech.com  
www.ammeraalbeltech.ch

### Thailand

T +66 2 902 2604-13  
info-th@ammeraalbeltech.com  
www.ammeraalbeltech.com

### United Kingdom

T +44 1992 500550  
info-uk@ammeraalbeltech.com  
www.ammeraalbeltech.co.uk

### United States

T +1 847 673 6720  
info-us@ammeraalbeltech.com  
www.ammeraalbeltech.com

### Vietnam

T +84 8 376 562 05  
info-vn@ammeraalbeltech.com  
www.ammeraalbeltech.com.vn

### Global Headquarters:

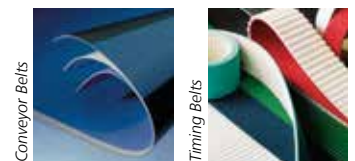
#### Ammeraal Beltech Holding B.V.

P.O. Box 38  
1700 AA Heerhugowaard  
The Netherlands

T +31 (0)72 575 1212  
F +31 (0)72 571 6455

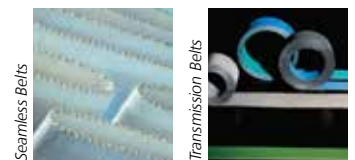
info@ammeraalbeltech.com  
www.ammeraalbeltech.com

Expert advice, quality solutions  
and local service  
for all your belting needs



Conveyor Belts

Timing Belts



Seamless Belts

Transmission Belts



Modular Belts

Fabrication & service

... and 150 more service contact points on [www.ammeraalbeltech.com](http://www.ammeraalbeltech.com)