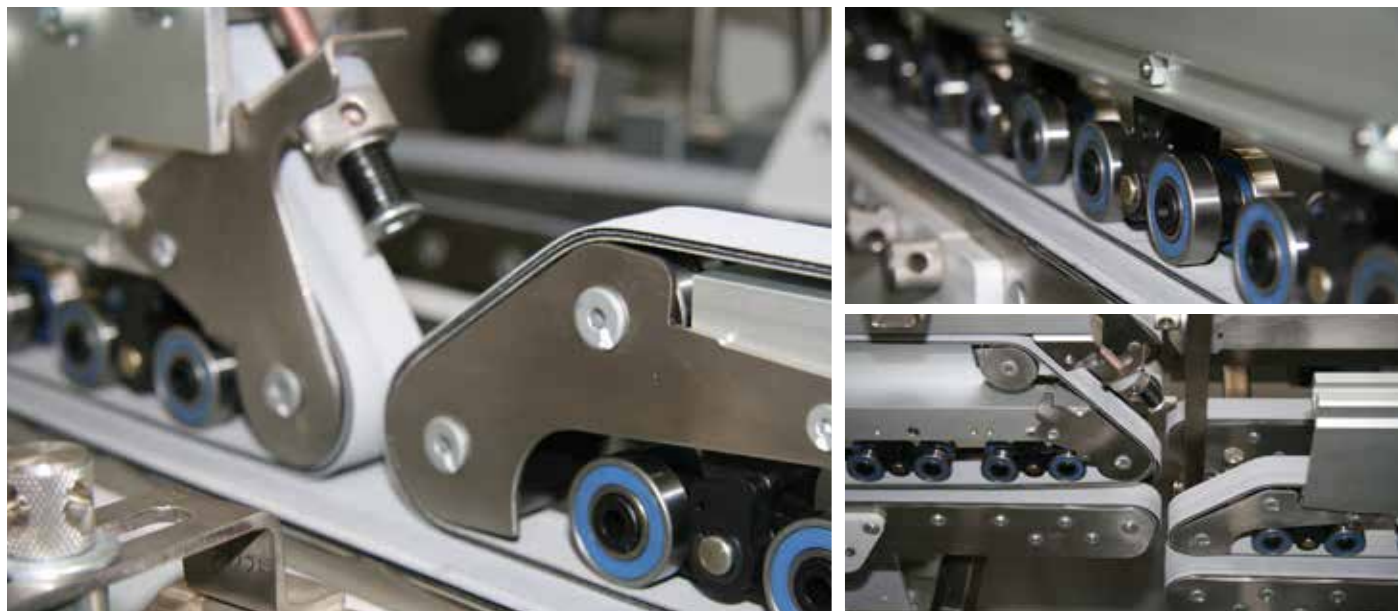


NEW

RAPPLON® Folder Gluer Belts

for the Box Folding Industry



Build a better box with Ammeraal Beltech's re-engineered RAPPLON® Folder Gluer Belts for the Carton Box Industry.

Our commitment to innovation shows in our new series of RAPPLON® Folder Gluer Belts, improved to provide better performance across a wide range of applications.

With long service lives, excellent grip for paper and carton, outstanding resistance to abrasion and paper dust for hassle-free maintenance, plus the availability of EC and FDA-approved Food Grade covers for a number of applications, these new belts can boost productivity, reduce downtime and cut energy use and costs year in and year out.

Main benefits:

- Extended service life thanks to innovative design and engineering
- Exceptional grip for precision performance
- Reduced energy consumption
- Less belt noise
- Available in thicknesses of 0.118, 0.157 and 0.217 inch

Innovation & Service in Belting

Available in either Classic or QuickSplice designs, RAPPLON® Folder Gluer Belts ensure precise transport and folding of carton blanks at very high speeds for nearly all applications across industry needs, including food and pharmaceutical packaging with our high-quality EC and FDA-approved Food Grade covers.

QuickSplice design

- Safe, reliable and rapid finger splice for fast belt replacement
- Safe and easy belt tracking, even at speeds as high as 700 m/min
- Energy-saving design, up to 14% lower energy consumption compared to market standard*
- Suitable for running in both directions
- Dimensionally stable polyester core
 - no re-tensioning required

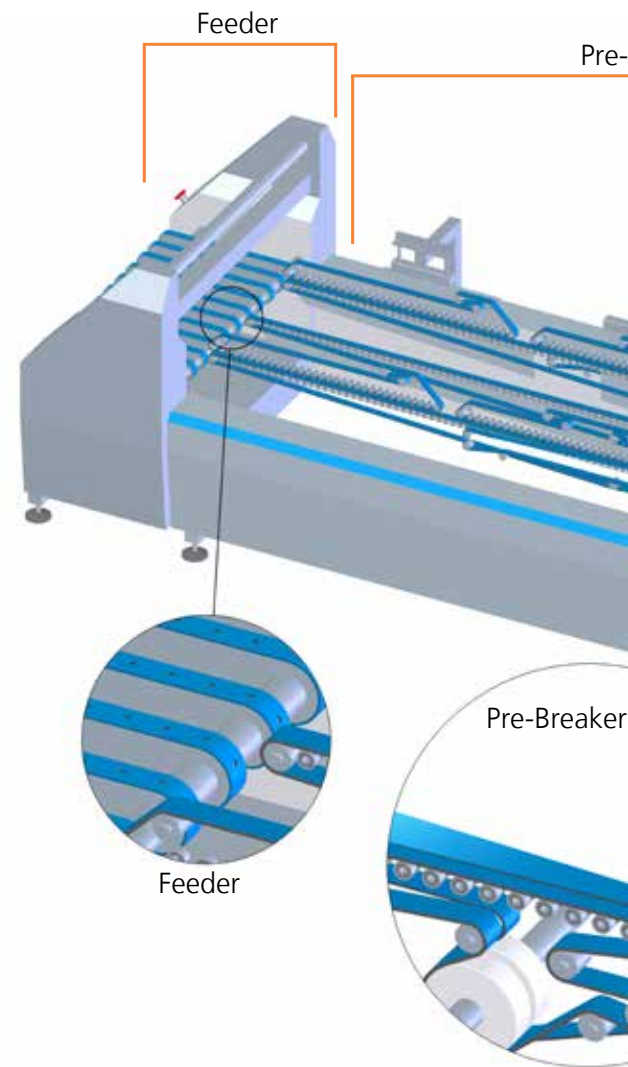
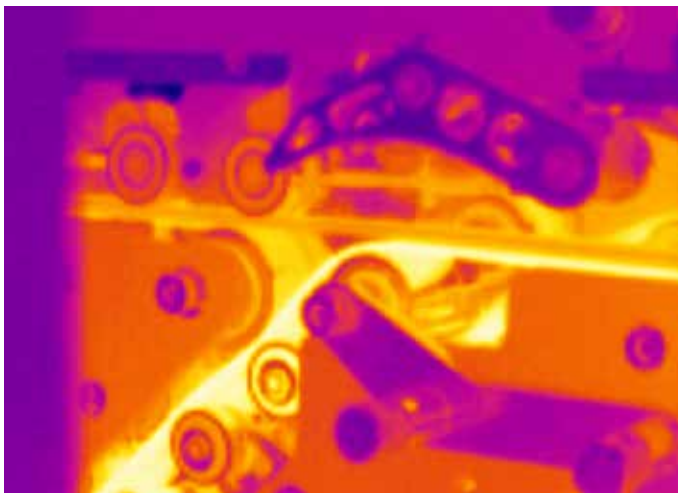
Classic design

- Traditional splice technology with skived and glued joint
- PA foil tension member
- FDA and EC Food Grade covers
- Outstanding edge stability gives no edge fraying
- Can be used in applications with temperatures up to 176 °F



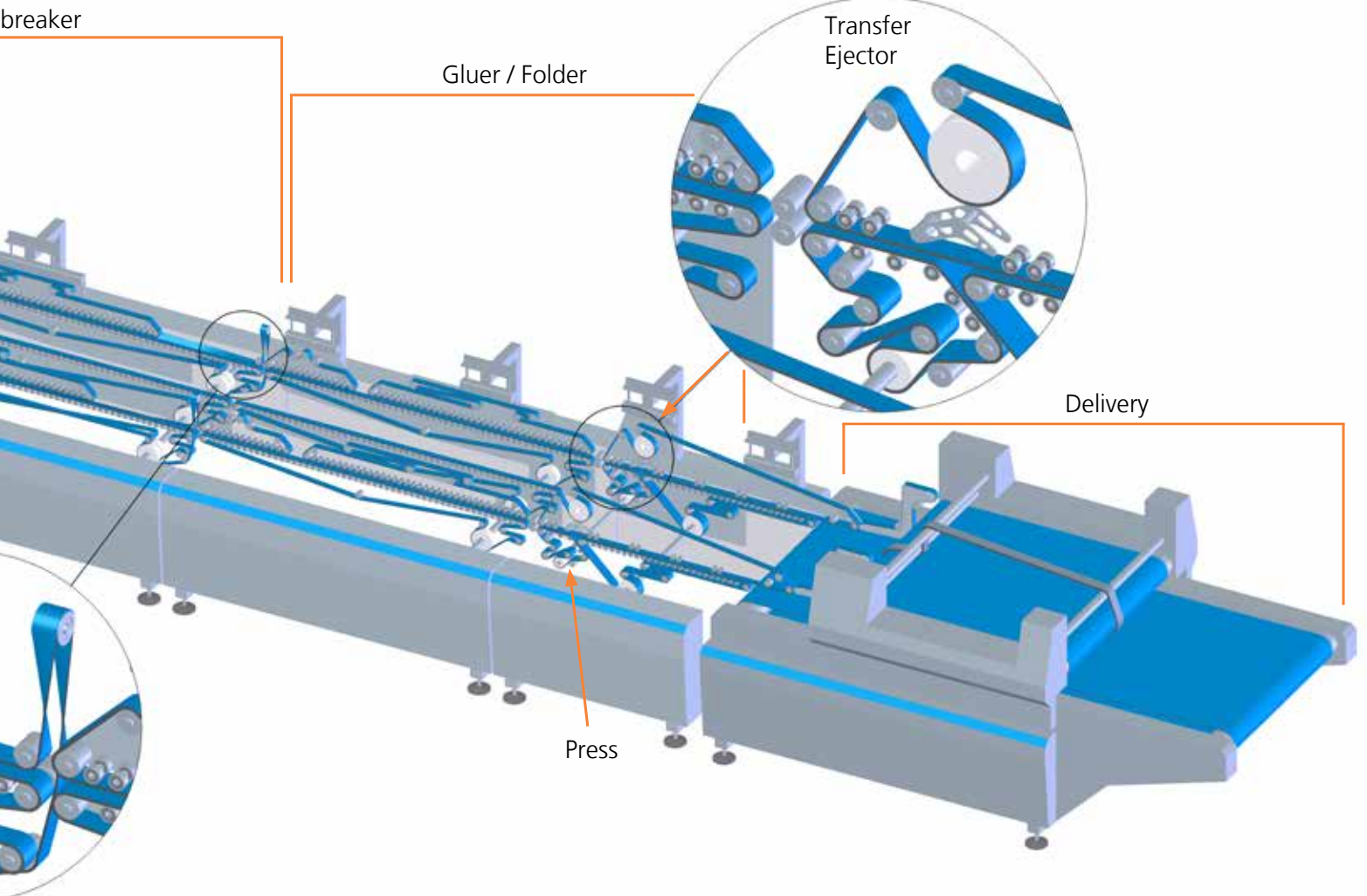
Food Grade belts comply with EC 1935/2004 and FDA standards supporting your HACCP program ISO 22000

* RAPPLON® QuickSplice Folder Gluer Belts have the lowest energy consumption in the market compared to other belts. The innovative material combination results in less self-heating of the belts (temperatures are approximately 20% lower compared to other belts under the same conditions).



Technical Data – RAPPLON® Food Grade Folder Gluer Belts

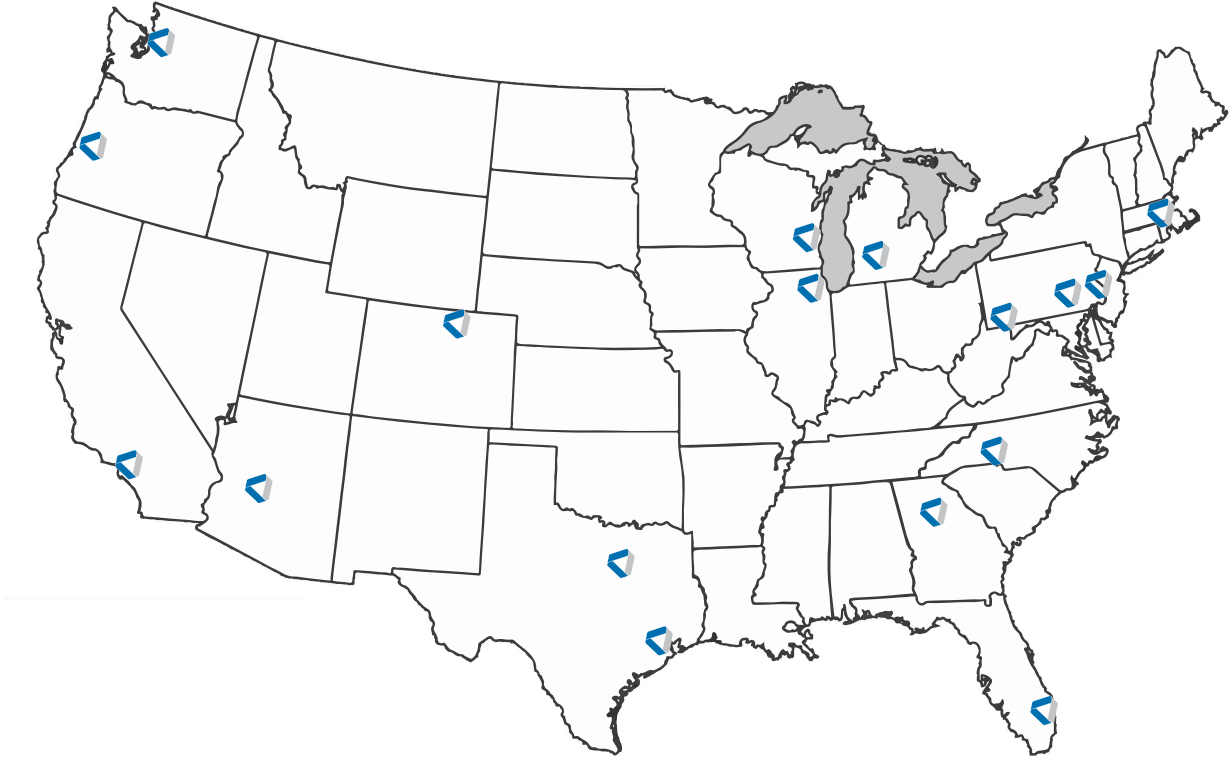
Item code	RAPPLON®	Thickness in inches	Force / belt factor at 1% elongation in N/mm	Recommended elongation	Min. pulley Ø in inches	Temperature range in °F	Antistatic
Application – Feeder Belts							
Ultrafeed 500							
54705	GT S04.25 RC + NRS 040 red	0.256	4.0	0.6 – 1.0%	1.575	32 to 176	yes
Application – Folder / Transport belt							
54783	RAPPLON® GG S04.30 RRC FG	0.118	4.0	0.6 – 1.0%	0.984	32 to 176	yes
54784	RAPPLON® GG S04.40 RRC FG	0.157	4.0	0.6 – 1.0%	1.181	32 to 176	yes
54274	RAPPLON® GG S06.30 RRC green	0.118	6.0	0.6 – 1.0%	1.181	32 to 176	yes
54145	RAPPLON® GG S06.40 RRC green	0.157	6.0	0.6 – 1.0%	1.575	32 to 176	yes
54275	RAPPLON® GG S06.50 RRC green	0.197	6.0	0.6 – 1.0%	1.969	32 to 176	yes
54276	RAPPLON® GG S06.60 RRC green	0.236	6.0	0.6 – 1.0%	2.362	32 to 176	yes
54780	RAPPLON® GG S06.30 RRC FG	0.118	6.0	0.6 – 1.0%	1.181	32 to 176	yes
54781	RAPPLON® GG S06.40 RRC FG	0.157	6.0	0.6 – 1.0%	1.575	32 to 176	yes
54782	RAPPLON® GG S06.55 RRC FG	0.217	6.0	0.6 – 1.0%	2.362	32 to 176	yes
54659	RAPPLON® GG E10.30 RRQ FG	0.118	10.0	0.4 – 0.6%	1.181	32 to 140	yes
54660	RAPPLON® GG E10.40 RRQ FG	0.157	10.0	0.4 – 0.6%	1.575	32 to 140	yes
54662	RAPPLON® GG E10.55 RRQ FG	0.217	10.0	0.4 – 0.6%	2.362	32 to 140	yes
Application – Transfer section							
54559	RAPPLON® UV E06.20 FQ	0.079		0.4 – 0.6%	0.787	32 to 140	yes
Application – Press and Delivery Section							
54525	RAPPLON® TG P03.12 FC	0.049	3.0	0.2 – 0.6%	0.984	32 to 176	yes
54265	RAPPLON® TG P04.20 RC	0.079	3.8	0.2 – 0.6%	0.984	32 to 176	yes
54266	RAPPLON® TG P07.30 RC	0.114	7.0	0.2 – 0.6%	0.969	32 to 176	yes
57239	RAPPLON® TG E18.20 P5C	0.075	18.0	0.2 – 0.6%	2.362	32 to 176	yes



Want to know more? Contact us

Get in touch with your nearest Ammeraal Beltech sales office or visit www.ammeraalbeltech.com to locate your local service center, and we'll be glad to help.

US Sales and Service Locations



Expert advice, quality solutions
and local service
for all your belting needs

SYNTHETIC

Ammeraal Beltech North America

7501 N. St. Louis Avenue
Skokie, IL 60076

T +1 847 673 6720
F +1 847 673 6373
TF +1 800 323 4170

info-us@ammeraalbeltech.com
www.ammeraalbeltech.com

MODULAR

Ammeraal Beltech North America

500 Brentwood Drive
Reading, PA 19611

T +1 610 372 1800
F +1 610 372 3590
TF +1 800 937 2864

info-us@ammeraalbeltech.com
www.ammeraalbeltech.com

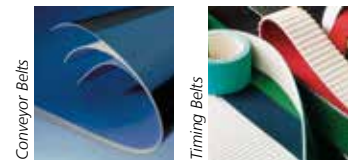
SPECIALTIES

Ammeraal Beltech North America

112 Nardis Drive
Jefferson, PA 15344

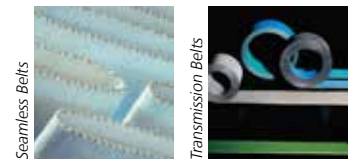
T +1 847 673 6720
F +1 847 673 6373
TF +1 800 323 4170

info-us@ammeraalbeltech.com
www.ammeraalbeltech.com



Conveyor Belts

Timing Belts



Seamless Belts

Transmission Belts



Modular Belts

Fabrication & Service

... and 150 more service contact points at www.ammeraalbeltech.com