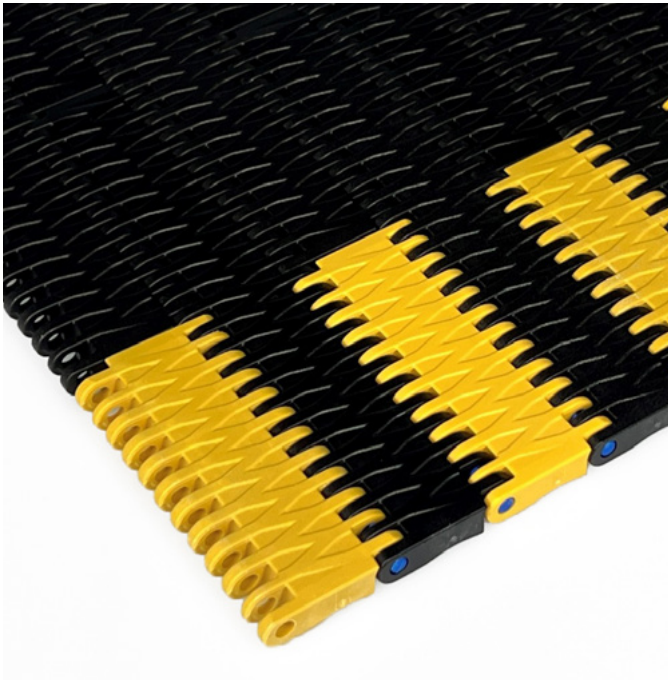


Circle Links belts Recycled modular belts



CircleLinks 

Become the sustainability leader in your industry

Join our efforts to reduce waste and reuse materials, leading the industry into a circular future.

Explore options to reduce CO₂ impact at your facility and gain CO₂ credits. Learn more about Circle Links and the take-back model at Ammeraal Beltech.



What is Circle Links?



Circle Links belts are our modular products molded from recycled plastic.

You already know those products
– now get to know their recyclable alternative.

How are Circle Links belts made?



First, we collect our damaged and worn-down belts made of recyclable materials.



Next, we use the patented technology for plastic resin sorting to recycle the belt.



Finally, the recycled polymer material is reused in a new link with up to 100% recycled material.

How much CO₂ can you save?

Life Cycle Assessment study for Circle Links, conducted by a third-party, shows that recycled POM in modular conveyor belts has a potential saving of more than 67,29% of CO₂ compared to the same product in virgin material.

The belt with the highest CO₂ reduction in our current offering is the QNB, with a reduction of 41,13 kg CO₂ per square meter.

How else can you benefit?

Circularity is becoming the new quality standard and performance indicator. Companies are expected to **back up their sustainability claims with real CO₂ reductions** and transparent ESG practices.

Circle Links belts are **directly suitable for EU ESG reporting**. They are supported by comprehensive CO₂ credit documentation (the Ammeraal Beltech certificate, calculation data, and LCA certificate issued by accredited third party).

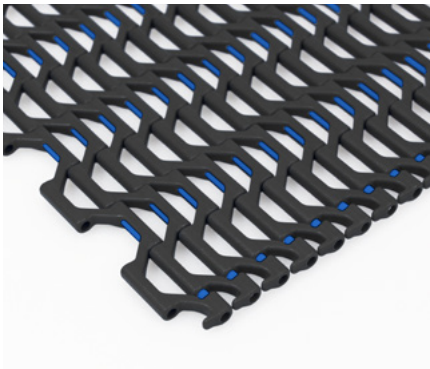
Purchasing Circle Links belts gives you CO₂ credits.

Now available as Circle Links

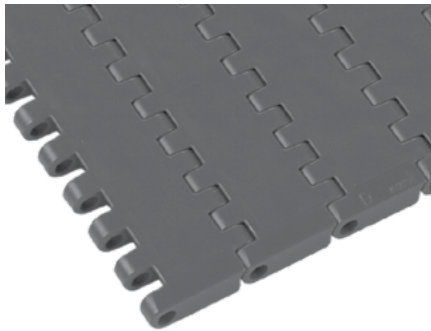
Circle Links supports an expanding selection of belts and materials. More belt types and materials are being evaluated, so if you have questions, get in touch with our team and discover available options. To explore current options or check compatibility, contact your sales representative.

Belt types:

uni M-OWL



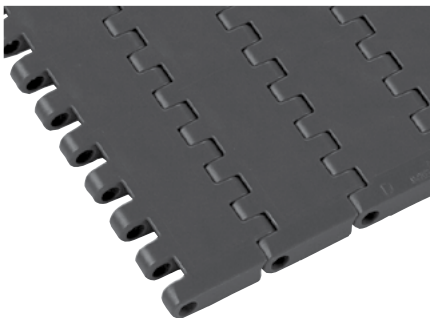
uni M-QNB



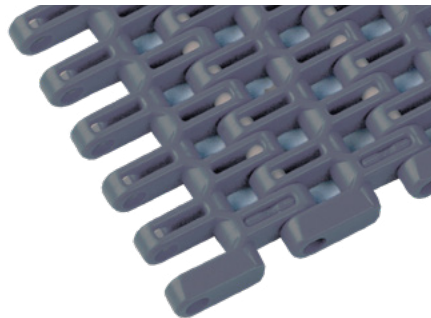
uni JCB



uni QNB



uni SNB M2 34%



uni MPB



Materials:

POM (Polyoxymethylene)

PP (Polypropylene)

Colours:

Colour of the day – a patchwork of colours and shades, free from color additives, molded from 100% recycled material

Black – if your application requires color consistency, then the only option would be to add black pigment

For corrugated industry: **soft hazy yellow** – with colour additive for safe walk edge markers

Give modular belts a second life with our take-back model

The take-back model is a unique setup where our customers can **return our used uni belts at end-of-life** (material restrictions apply). This material is used to make new Circle Links belts.

This makes Circle Links the first and only recycled modular belting solution with a take-back program on the market.

Save on incineration costs and return the uni modular belts back to us.

Contact our team to get up-to-date details.

Discover Your Local Contacts

The local partner of choice
for sustainable conveyor belting solutions
- around the globe.



General contact information:

Ammeraal Beltech

P.O. Box 38
1700 AA Heerhugowaard
The Netherlands

T +31 72 575 1212

www.ammeraalbeltech.com



Scan the QR code
and find your local
contact

