

Keeping the Industry Moving

AMMERAAL BELTECH AT CCE INTERNATIONAL

The corrugated and folding carton industry is a strong focus for global conveyor belting specialists Ammeraal Beltech, who are exhibiting at this year's CCE International in Munich, 12-14 March. For this very vibrant sector of the packaging industry, the company will be featuring specialist leading-edge technology solutions that offer both high performance and reduced maintenance costs and downtime.

Performance plus efficiency

A good example is Ammeraal Beltech's ZipLink® seamless belt system, which delivers smooth flow and enhanced production output, and is partnered by the ZipLock link belt joining system, which provides efficient linkage with much-reduced maintenance downtime.

Game-changing two-part sprocket

Initially created with the needs of the corrugated board industry in mind, the innovative uni UltraFit Two-part Sprocket System, with its interchangeable adapters, has proved to be a major engineering achievement for efficient conveying. It combines high performance with superior strength and a long service life; and replacing a broken sprocket no longer requires complex gearbox and drive shaft removals.

Multi-directional conveying

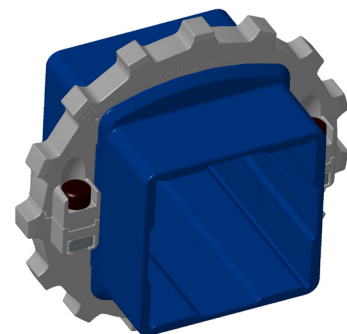
Also featured at CCE International will be the multi-directional uni QNB Ball Belt, now widely employed in a variety of tasks in intralogistics, materials handling, packaging and manufacturing. The belt's integrated rotating closed ball construction can be precisely activated or deactivated to allow for alignment, rotation, sorting, accumulation, or separation, with acceleration and deceleration of conveyor speed appropriately controlled. Belt speed can also be slowed at defined points as required, for a variety of key tasks such as inspection or sorting.

'One-stop Belt Shop'

Visitors to CCE International will also be able to benefit from Ammeraal Beltech's established and well-recognised 'One-stop Belt Shop'. Ammeraal Beltech's technical team look forward to discussing visitors' needs and wants on Stand 328, Hall B6, at CCE International in Munich.

www.ammeraalbeltech.com

—ends—



About Ammeraal Beltech

Headquartered in The Netherlands, Ammeraal Beltech is one of the world's leading names in lightweight process and conveyor belting. An industry leader in both R&D and in its global service platform, Ammeraal Beltech designs, manufactures, distributes and maintains high-quality process and conveyor belts for a diverse range of applications covering nearly every major industry.