

Belts for the Recycling Industry





Knowing Your Production Processes

Growth **in the recycling industry** is due to increased awareness of both individuals and companies doing what is right to protect our environment. While metal is the most recycled material in the world, over the past 10 years the generation of paper, cardboard and plastic packaging has steadily increased creating urgent demands for more recycling processes.

Working closely with key OEM's throughout the world **Ammeraal Beltech has developed durable and reliable belting solutions** to address the entire range of applications found within solid waste recycling production processes.

Accepting the challenges collected through our customer interactions, Ammeraal Beltech's development team developed belts that are chemical attack resistant, flame retardant and oil resistant, require cut and wear resistance and meet the load requirement of heavy product transfer.

Key areas of focus include:

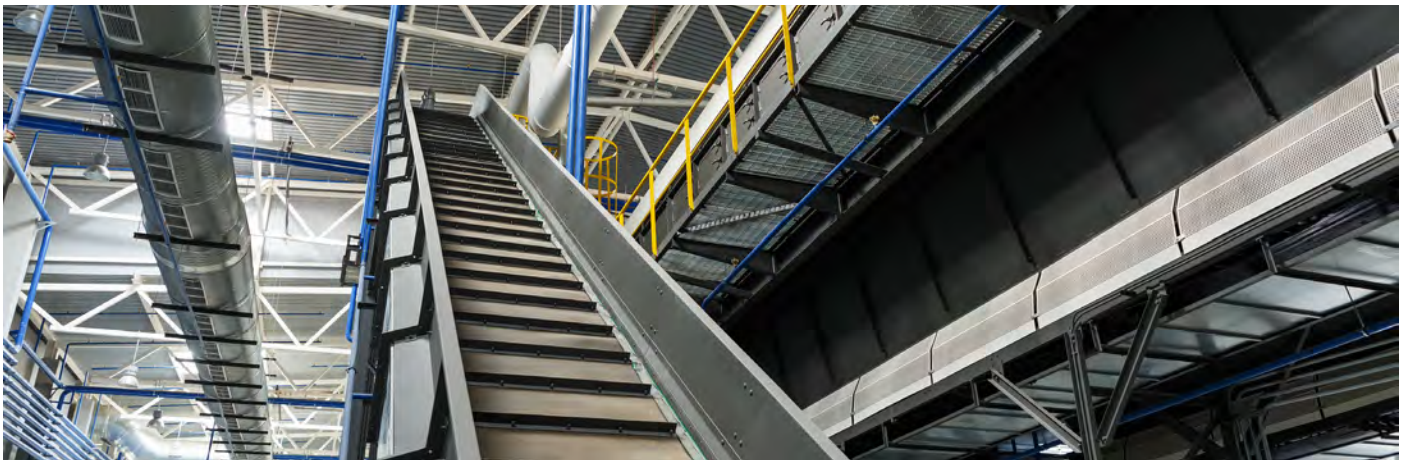
- Transfer of solid waste: belts designed for automated or manual loading conveyors
- Sorting: belts designed for use in optical or manual sorted processes
- Waste Separation: belts designed for use in Eddy Current sorting processes
- End of line: belts designed for moving bulk accumulation

Recycling as one of the most important goals of our society

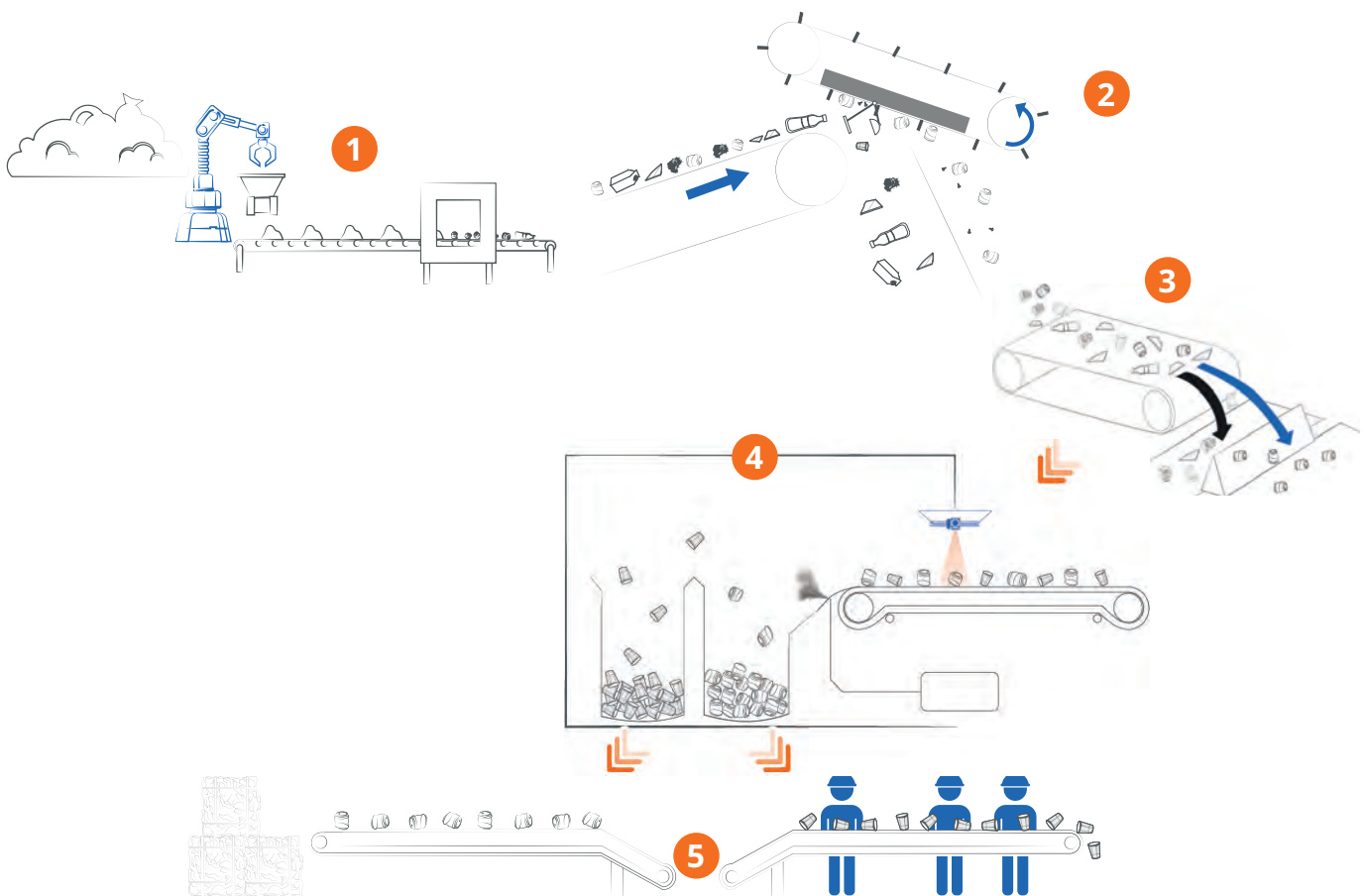
Recycling conserves resources. When we recycle, used materials are converted into new products, reducing the need to consume natural resources. It saves energy and helps protect the environment. This 'life-cycle' process of a material once again is known as a 'circular economy'.



ONE STOP
STOP SHOP
belt



Solid Waste Sorting and Processing



Recommended Belts and Fabrications

	Flexam 576601	Flexam 573230	Flexam 577481	Nonex 571800	Nonex 573360	Ropanyl 579351	Ropanyl 514339	Soliflex	Accessories
1 Transfer and sorting of solid waste	●	●	●	●	●				Soliflex PU Cleats
2 Magnetic separator overband						●	●	●	Soliflex PU Cleats
3 Eddy Current							●		Bordoflex; profiles
4 Optical sorting						●	●		
5 End of line conveying	●	●	●	●	●				

Easy fastening solutions can be offered on request e.g. Ziplock and/or mechanical fasteners.

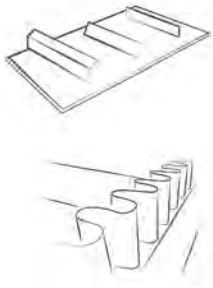
Custom request? Get in contact with Ammeraal Beltech experts!

Recommended Belts and Fabrication Options

Technical data

Product group	Article code	Article description		Belt thickness [mm]	Hardness [Shore A]	Weight [kg/m ²]	Force at 1% elongation [N/mm]	Temperature [C°]
SB	576601	Flexam EX 10/2 0+05	black M2 AS FR IR	3.50	80A	3.70	10	-15 to +80
SB	573230	Flexam EX 10/2 0+10	black AS FR	3.00	80A	3.80	10	-15 to +80
SB	577481	Flexam EM 15/3 0+10	black M2 AS	4.00	90A	4.80	15	-15 to +80
SB	571800	Nonex EM 10/2 0+20	green FG	3.80	65A	4.30	10	-15 to +80
SB	573360	Nonex EM 10/2 00+07	light blue FG AM	2.50	65A	2.80	10	-15 to +80
SB	579351	Ropanyl EM 10/2 00+20	black M2 AS	3.80	93A	4.70	10	-20 to +90
SB	514339	Ropanyl EM 15/3 00+25	black M2 NL	5.40	93A	6.20	15	-20 to +90

AS = Antistatic; AM = AntiMicrobial; FR = Flame retardant; FD = Food grade; IR = Impact resistant; M2 = Matt finish; NL = Non-logo



Soliflex PU Cleats and Bordoflex for efficient conveying

For straight or inclined conveying, they increase the stability and rigidity of the belts (cleats) and prevent waste from sliding down or falling, no matter how difficult work conditions are.



Side-flaps

Made in PVC A18+05 (for usual conveying) or PU 00+02 (for optical sorter equipped with PU belt), the side-flaps can be provided in a width of around 120mm and very high potential length (more than 1 km per site).

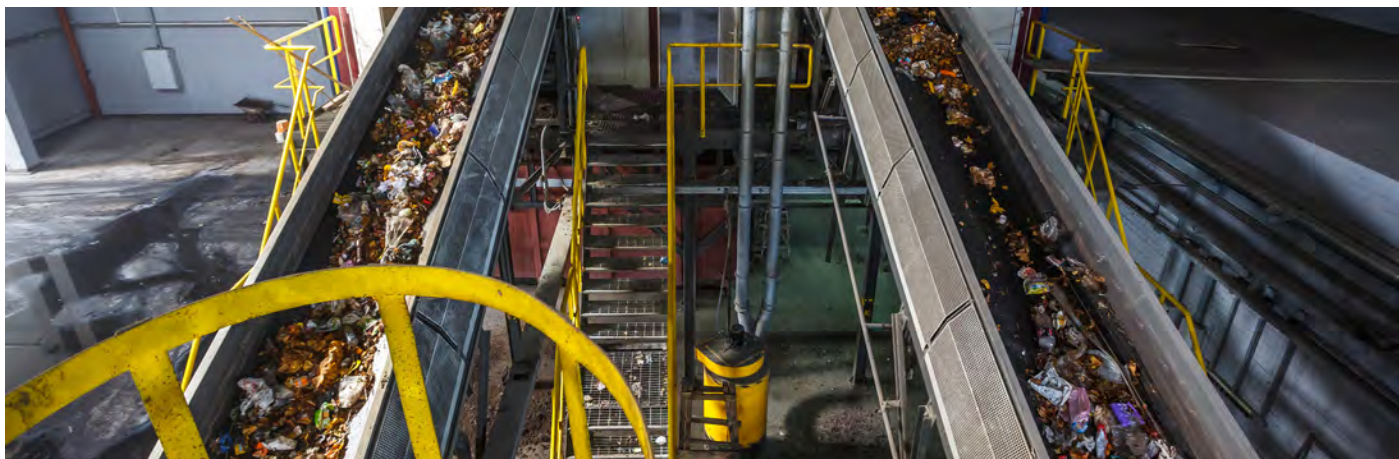
Focus on high speed optical sorter

The sorter compares objects to user-defined accept/reject criteria to identify and remove defective products and foreign material (FM) from the production line.

Use **Ropanyl belts 514339** and **579351** to get the best ever results: error free even at high speed!

FEATURES	BENEFITS
PU belts, black colour and matt finishing	As the top cover is regular, we can easily detect the material
Smooth running and uniform belts thickness, even when joined	No vibration, no distortion to the identification of the optical sorter, even at high speed
Good longitudinal flexibility and less coefficient of friction on slider bed	Less energy consumption and reduced CO2 emissions
Excellent resistance to chemical and mechanical attack	Long life belts, cost saving
Light weight compared to rubber belts	Less energy consumption, motor downsizing, easy to be replaced, improvement safety/work condition





Just-in-time delivery

At Ammeraal Beltech, we understand the importance of keeping your business running because we know just how costly and disruptive downtime can be.

A solid combination of geographical coverage, industry-segment knowledge and product management is the foundation of our innovative and service-oriented organisation.

Ammeraal Beltech has a Global Sales and Service Team and a Partner Network ready to help round the clock!

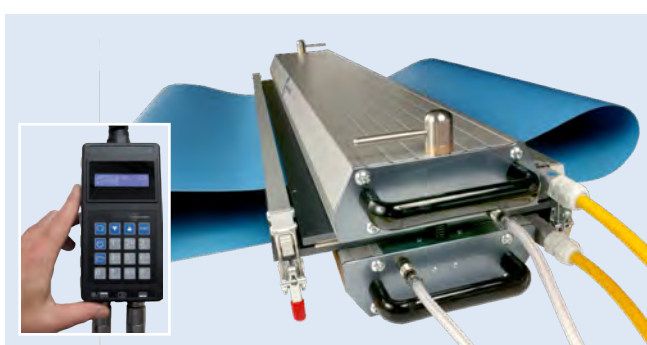


28 fully owned operating companies



Excellent advice, products, fabrication and service

- Ammeraal Beltech offers a wide range of belting solutions and accessories to help you improve processes to secure a seamless operation.
- Skilled personnel are on call to install or repair belts, using professional equipment that is suitable for production plants.
- Most orders can be shipped directly from stock.



Quick, easy and precise belt splicing

With our expanded Maestro splice equipment range, Ammeraal Beltech has taken an important step forward in the critical areas of splice quality, speed, and precision.

Our new compact, hand-held, computerised splicing press control-box is the perfect complement to our Maestro press, and makes precise splicing as easy as 1-2-3.

Find out more: www.ammeraalbeltech.com

Local Contacts

... and 150 more service contact points
at ammeraalbeltech.com

Argentina

T +54 11 4218 2906
info-ar@ammeraalbeltech.com

Australia

T +61 3 8780 6000
info-au@ammeraalbeltech.com

Austria

T +43 171728 133
info-de@ammeraalbeltech.com

Belgium

T +32 2 466 03 00
info-be@ammeraalbeltech.com

Canada

T +1 905 890 1311
info-ca@ammeraalbeltech.com

Chile

T +56 2 233 12900
info-cl@ammeraalbeltech.com

China

T +86 512 8287 2709
info-cn@ammeraalbeltech.com

Colombia

T +57 1 893 9890
info-co@ammeraalbeltech.com

Czech Republic

T +420 567 117 211
info-cz@ammeraalbeltech.com

Denmark

T +45 7572 3100
info-dk@ammeraalbeltech.com

Finland

T +358 207 911 400
info-fi@ammeraalbeltech.com

France

T +33 3 20 90 36 00
info-fr@ammeraalbeltech.com

Germany

T +49 4152 937-0
info-de@ammeraalbeltech.com

Hungary

T +36 30 311 6099
info-hu@ammeraalbeltech.com

India

T +91 44 265 34 244
info-in@ammeraalbeltech.com

Israel

T +972 4 6371485
info-il@ammeraalbeltech.com

Italy

T +39 051 660 60 06
info-it@ammeraalbeltech.com

Japan

T +81 52 433 7400
info-jp@ammeraalbeltech.com

Luxembourg

T +352 26 48 38 56
info-lu@ammeraalbeltech.com

Malaysia

T +60 3 806 188 49
info-my@ammeraalbeltech.com

Mexico

T +52 55 5341 8131
info-mx@ammeraalbeltech.com

Netherlands

T +31 72 57 51212
info-nl@ammeraalbeltech.com

Peru

T +51 1 713 0069
info-pe@ammeraalbeltech.com

Poland

T +48 32 44 77 179
info-pl@ammeraalbeltech.com

Portugal

T +351 22 947 94 40
info-pt@ammeraalbeltech.com

Singapore

T +65 62739767
info-sg@ammeraalbeltech.com

Slovakia

T +421 255648542
info-sk@ammeraalbeltech.com

South Korea

T +82 31 448 3613-7
info-kr@ammeraalbeltech.com

Spain

T +34 93 718 3054
info-es@ammeraalbeltech.com

Sweden

T +46 (0) 10 130 96 00
info-se@ammeraalbeltech.com

Switzerland

T +41 55 2253 535
info-ch@ammeraalbeltech.com

Thailand

T +66 2 902 2604-13
info-th@ammeraalbeltech.com

Turkey

T +90 232 877 0700
info-tr@ammeraalbeltech.com

United Kingdom

T +44 1992 500550
info-uk@ammeraalbeltech.com

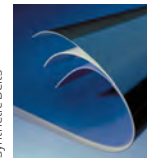
United States

T +1 847 673 6720
info-us@ammeraalbeltech.com

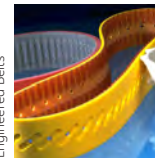
Vietnam

T +84 8 376 562 05
info-vn@ammeraalbeltech.com

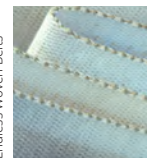
**Expert advice, quality solutions
and local service
for all your belting needs**



Synthetic Belts



Engineered Belts



Endless Woven Belts



Homogeneous Belts



Modular Belts



Fabrication & Service

General contact information:

Ammeraal Beltech
P.O. Box 38
1700 AA Heerhugowaard
The Netherlands

T +31 (0)72 575 1212
info@ammeraalbeltech.com

ammera.com