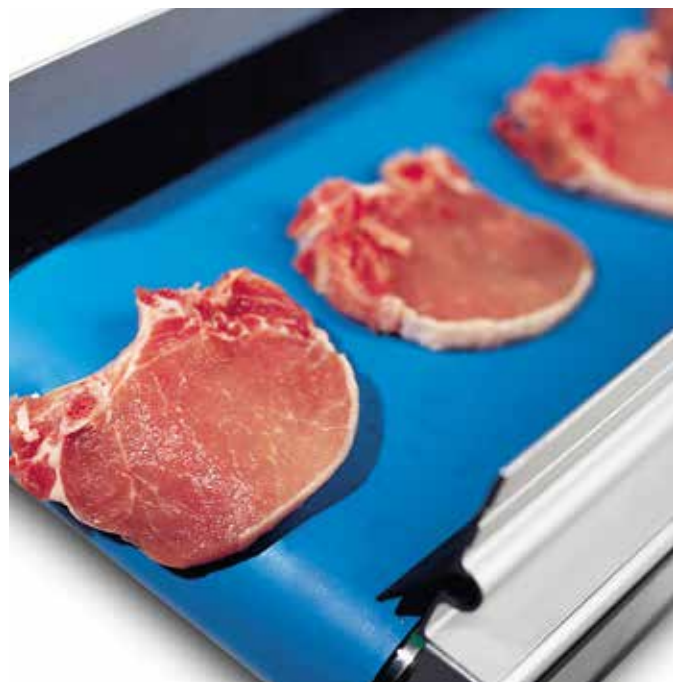


# Belts for the Meat, Poultry & Seafood Industries





## Knowing Your Production Processes

### A specialist in your industries

Within the food industry, Ammeraal Beltech has been setting the standard for many years with consistently high product quality and market-specific hygiene features. Over the years, our innovations have resulted in a number of unique Food Safety and hygiene concepts.

### Ammeraal Beltech has the right belting solutions for all your processes in the meat, poultry and seafood industries, including:

- » Slaughtering (pork/red meat/poultry)
- » Cutting/sorting
- » Further processing
- » Internal logistics
- » Packaging



Ammeraal Beltech  
member of the European  
Hygienic Engineering  
& Design Group



Food Grade belts comply  
with EC 1935/2004 and USDA  
standards supporting your  
ISO 22000 requirements  
(previously HACCP)

Our Belts are "a cut above the rest"



### Sanitation and hygiene

- Poor hygiene at any stage of your production process can affect product quality and shelf life and may even cause health hazards.
- Our hygienic concepts and products have proven in many cases to be the solution.
- New experiences and knowledge are acquired every day; ask the Ammeraal Beltech experts for advice on your specific problem or requirement.

Further information at [www.ammeraalbeltech.com](http://www.ammeraalbeltech.com)







## A Trusted Partner in the Meat, Poultry and Seafood Industries

Ammeraal Beltech works with its customers, OEMs and end users as partners, to provide conveyor and process belting solutions that can improve product quality, reduce maintenance times and lower manufacturing costs.

### Innovative solutions to meet customer challenges:

Industry challenges	Ammeraal Beltech solutions
Cleanability	Hygienic design across the entire Ammeraal Beltech product range
Belt failure	Non-breakable modular belts Impact resistant synthetic belts Heavy-duty homogeneous belts
Blade marks	Modular belts made of cut-resistant polymer material
Extreme operating conditions	Belts designed for harsh working environments
Sticky or wet product	Non-stick material and belt finish

### uni UCB – the special modular solution

uni UCB offers impressive performance as a light-weight belt; it's a competitive alternative to heavier and more expensive belts. What's more, it's easy to operate, maintain and clean. In your production environment less water and cleaning chemicals are needed, meaning lower energy costs and CO2 footprint.



## Fit-for-purpose Belting Solutions with Regular...



### **uni MPB – Meat Processing Belt**

- single link, lockpin, wide range of accessories, closed/open surfaces, roller and rubber top
- materials: POM/PE/NBWR, acetal POM-DI for cut resistance
- Food Grade complies with NSF/USDA standards
- an industry favourite



### **uni UCB – Ultra Clean Belt**

- taking hygiene & cleanability one step further
- easy maintenance
- a part of our SAFE & CLEAN concept
- materials: POM-DI, PP-i, PE-I
- Food Grade complies with NSF/USDA standards



### **Synthetic Ropanyl & Nonex Belts**

- Food Grade (complies with EC and FDA standards), easy to clean
- good resistance to oil and fat
- excellent resistance to cleaning agents
- available in blue and white
- sealed edges



### **RAPPLON® Food Grade Elastic homogenous belts**

- no waste and/or downtime
- simple tracking, easy on bearings
- just fit and forget
- highest hygienic standards, no place for bacteria to hide
- a safe joint that anybody can splice





## ... and Specialised Belts



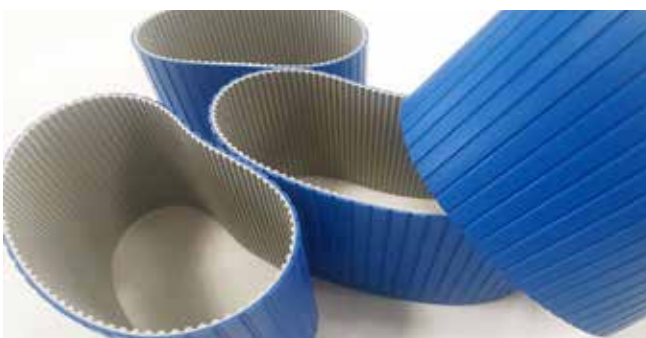
### Sausage manufacturing belts

- different surface profiles
- available with AntiMicrobial execution
- sealed edges that protect the aramide timing belt reinforcement
- silicone (Silam) cover to ensure high grip in cold and wet conditions
- oil-resistant and chemical-resistant



### AmSqueeze belts for separating

- robust belt construction
- easy-to-clean surface
- wear-resistant cover
- rigid belt construction
- Food Grade (complies with EC and FDA standards)



### Engineered Belts

- 100% custom-made solution
- wide range of top covers and belt bodies from synthetic to timing belts
- Food Grade (complies with EC and FDA standards)
- machined solution by water-jet up to CNC equipment



### BlueSync – hygienic belts

- Food Grade (complies with EC and FDA standards)
- 100% slip-free belt drive – even in wet or greasy operating environments
- improved hygiene with our total-seal guarantee
- easy cleaning, thanks to sealed edges and no-coil nose



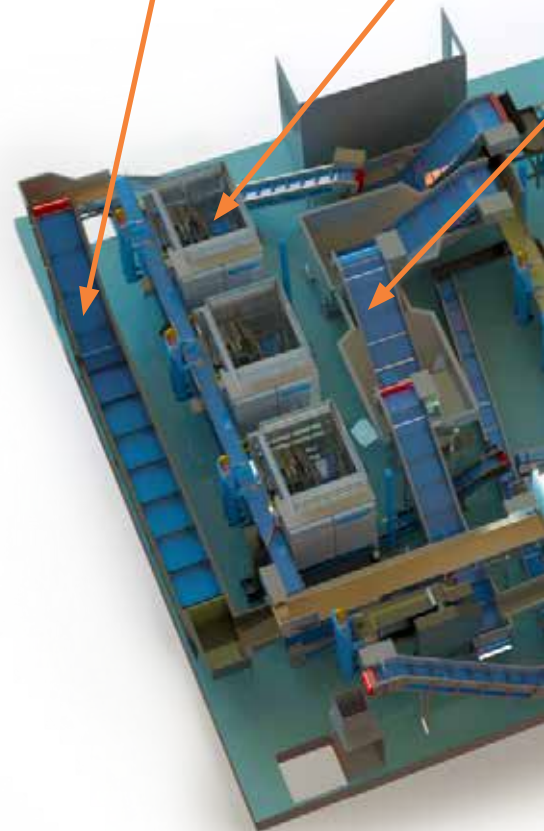
## Belts for the Fish & Seafood Industry

The often extreme operational environments in this industry demand belts with special characteristics.

In some cases, belts must be smooth and non-absorbent to water or oils – in other cases, an extremely high pulling force or great impact resistance is needed.

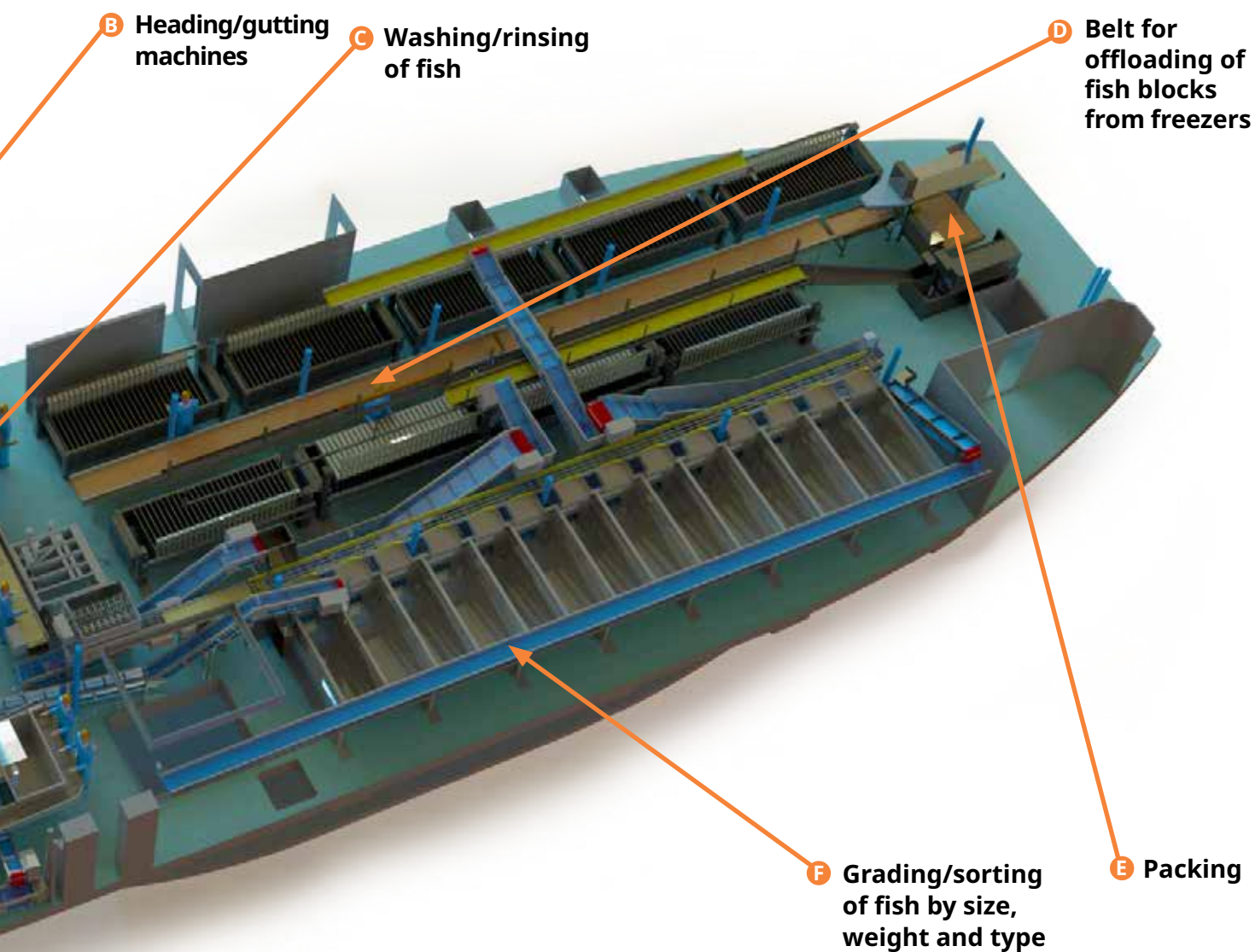
Ammeraal Beltech offers all this, along with the strongest Food Grade modular belt available on the entire market, and much more.

**A Inlet of fish from tank**



» *“From stunning, kill zone, heading, gutting, filleting and slicing to portioning, waste management and packaging, Ammeraal Beltech can provide the right belt solutions for our needs.”*





Hygiene, efficiency and easy maintenance have top priority when processing fish and seafood.

Ammeraal Beltech provides the most hygienic belts on the market for customers demanding the best cleanability, including a complete range of easy-to-clean belts for fish and seafood products such as shrimps, salmon, tuna, etc.



## Soliflex PRO & Soliflex PRO mini – the Ultimate Hygienic Belt

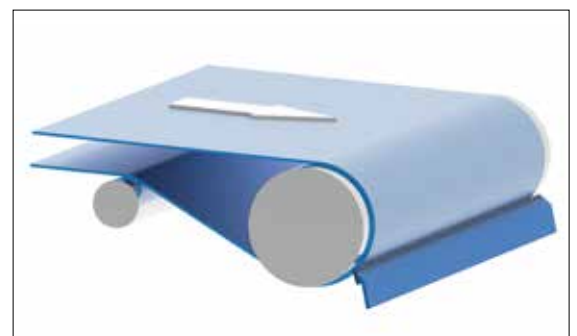
The Soliflex PRO and Soliflex PRO mini belts are a **Win-Win solution for the food industry**, offering the ultimate hygiene and a lower total cost of ownership.

- unique and ultra-hygienic belt design
- maintenance-free tracking
- excellent product release properties; less waste, easy to clean in minimal time and reduced water waste
- unique lug and sprocket design
- customisable lug positioning and accessories
- blue belt and blue accessories for increased Food Safety



## Belt Accessories

- Different kinds of **profiles and covers** for various applications
- **AmFlight** as a unique solution for inclined transport
- **UltraScraper** – a metal detectable and AntiMicrobial scraper for greater hygiene levels and efficient food processing



*UltraScraper*





## SAFE & CLEAN



*Modular belt uni UCB (Ultra Clean Belt)*



*Homogeneous belt Soliflex PRO*

### The **SAFE & CLEAN** concept generation of belts

Food safety is more important than ever! As a leading manufacturer of process and conveyor belts, particularly for the food industry, Ammeraal Beltech is constantly developing new generations of products and solutions with a focus on hygiene, the cornerstone of your and Ammeraal Beltech's business. Confidence in our Food Safety approach is the paramount reason for choosing Ammeraal Beltech as your belt supplier.

The **SAFE & CLEAN** concept supports you in two ways:

#### **SAFE**

- safe products, in full compliance with international standards as EC 1935/2004, EU 10/2011, and FDA standards
- belt designs, colours and materials that all help you to achieve your ISO 22000 requirements (previously HACCP)
- innovative solutions to avoid migration to foodstuffs
- records for full traceability of belt materials

#### **CLEAN**

- belts that are easy and quick to clean
- drastic reduction in cleaning costs
- less labour-intensive, and less water and detergent required
- unique designs for easy cleanability (no hiding places for bacteria)
- the possibility of cleaning the belt while it's in motion
- greater control of cross-contamination, thanks to visible contrast between blue belt and food product

Ammeraal Beltech **SAFE & CLEAN** reduces your cleaning costs



## One-Stop Belt Shop

We offer a wide range of belting products. By choosing Ammeraal Beltech, you're not only reducing your supplier base, you're also have access to our worldwide network of industry and product specialists.

**Experience** – our Dutch roots began in 1950 with the invention of a revolutionary baking belt; many of our subsidiary companies have been active in the belting industry for more than a century.

**Scale** – we are truly global – with 25,000 customers in more than 150 countries; over 2,500 employees, seven manufacturing facilities, and 80 different service centres across 25 countries.

**Reach** – we provide solutions for nearly every industrial sector, including Automotive and Tyre, Food, Textile, Tobacco, Printing and Paper, Wood and Timber, Aviation and Airports, Construction and Logistics and Distribution.



local stock  
quick belt replacement  
short delivery time  
24/7 service

The widest product range in the industry





## Just-in-time delivery

**At Ammeraal Beltech, we understand the importance of keeping your business running because we know just how costly and disruptive downtime can be.**

A solid combination of geographical coverage, industry-segment knowledge and product management is the foundation of our innovative and service-oriented organisation.

**Ammeraal Beltech has a Global Sales and Service Team and a Partner Network ready to help round the clock!**

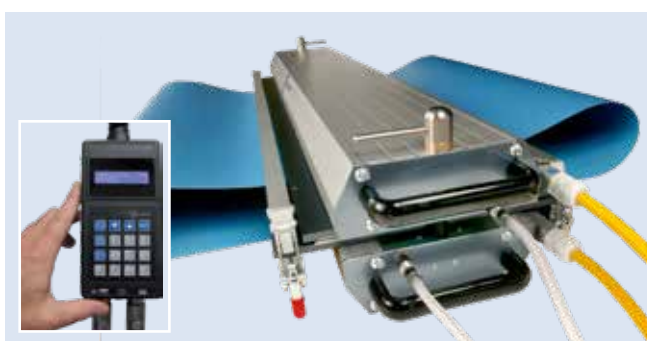


**28 fully owned operating companies**



### **Excellent advice, products, fabrication and service**

- Ammeraal Beltech offers a wide range of belting solutions and accessories to help you improve processes to secure a seamless operation.
- Skilled personnel are on call to install or repair belts, using professional equipment that is suitable for production plants.
- Most orders can be dispatched directly from stock.



### **Quick, easy and precise belt splicing**

With our expanded Maestro splice equipment range, Ammeraal Beltech has taken an important step forward in the critical areas of splice quality, speed, and precision.

Our new compact, hand-held, computerised splicing press control-box is the perfect complement to our Maestro press, and makes precise splicing as easy as 1-2-3.

**Find out more: [www.ammeraalbeltech.com](http://www.ammeraalbeltech.com)**

## Local Contacts

... and 150 more service contact points  
at [ammeraalbeltech.com](http://ammeraalbeltech.com)

### Argentina

T +54 11 4218 2906  
[info-ar@ammeraalbeltech.com](mailto:info-ar@ammeraalbeltech.com)

### Australia

T +61 3 8780 6000  
[info-au@ammeraalbeltech.com](mailto:info-au@ammeraalbeltech.com)

### Austria

T +43 171728 133  
[info-de@ammeraalbeltech.com](mailto:info-de@ammeraalbeltech.com)

### Belgium

T +32 2 466 03 00  
[info-be@ammeraalbeltech.com](mailto:info-be@ammeraalbeltech.com)

### Canada

T +1 905 890 1311  
[info-ca@ammeraalbeltech.com](mailto:info-ca@ammeraalbeltech.com)

### Chile

T +56 2 233 12900  
[info-cl@ammeraalbeltech.com](mailto:info-cl@ammeraalbeltech.com)

### China

T +86 512 8287 2709  
[info-cn@ammeraalbeltech.com](mailto:info-cn@ammeraalbeltech.com)

### Colombia

T +57 893 9890  
[info-co@ammeraalbeltech.com](mailto:info-co@ammeraalbeltech.com)

### Czech Republic

T +420 567 117 211  
[info-cz@ammeraalbeltech.com](mailto:info-cz@ammeraalbeltech.com)

### Denmark

T +45 7572 3100  
[info-dk@ammeraalbeltech.com](mailto:info-dk@ammeraalbeltech.com)

### Finland

T +358 207 911 400  
[info-fi@ammeraalbeltech.com](mailto:info-fi@ammeraalbeltech.com)

### France

T +33 3 20 90 36 00  
[info-fr@ammeraalbeltech.com](mailto:info-fr@ammeraalbeltech.com)

### Germany

T +49 4152 937-0  
[info-de@ammeraalbeltech.com](mailto:info-de@ammeraalbeltech.com)

### Hungary

T +36 30 311 6099  
[info-hu@ammeraalbeltech.com](mailto:info-hu@ammeraalbeltech.com)

### India

T +91 44 265 34 244  
[info-in@ammeraalbeltech.com](mailto:info-in@ammeraalbeltech.com)

### Israel

T +972 4 6371485  
[info-il@ammeraalbeltech.com](mailto:info-il@ammeraalbeltech.com)

### Italy

T +39 051 660 60 06  
[info-it@ammeraalbeltech.com](mailto:info-it@ammeraalbeltech.com)

### Japan

T +81 52 433 7400  
[info-jp@ammeraalbeltech.com](mailto:info-jp@ammeraalbeltech.com)

### Luxembourg

T +352 26 48 38 56  
[info-lu@ammeraalbeltech.com](mailto:info-lu@ammeraalbeltech.com)

### Malaysia

T +60 3 806 188 49  
[info-my@ammeraalbeltech.com](mailto:info-my@ammeraalbeltech.com)

### Mexico

T +52 55 5341 8131  
[info-mx@ammeraalbeltech.com](mailto:info-mx@ammeraalbeltech.com)

### Netherlands

T +31 72 57 51212  
[info-nl@ammeraalbeltech.com](mailto:info-nl@ammeraalbeltech.com)

### Poland

T +48 32 44 77 179  
[info-pl@ammeraalbeltech.com](mailto:info-pl@ammeraalbeltech.com)

### Portugal

T +351 22 947 94 40  
[info-pt@ammeraalbeltech.com](mailto:info-pt@ammeraalbeltech.com)

### Singapore

T +65 62739767  
[info-sg@ammeraalbeltech.com](mailto:info-sg@ammeraalbeltech.com)

### Slovakia

T +421 255648542  
[info-sk@ammeraalbeltech.com](mailto:info-sk@ammeraalbeltech.com)

### South Korea

T +82 31 448 3613-7  
[info-kr@ammeraalbeltech.com](mailto:info-kr@ammeraalbeltech.com)

### Spain

T +34 93 718 3054  
[info-es@ammeraalbeltech.com](mailto:info-es@ammeraalbeltech.com)

### Sweden

T +46 (0) 10 130 96 00  
[info-se@ammeraalbeltech.com](mailto:info-se@ammeraalbeltech.com)

### Switzerland

T +41 55 2253 535  
[info-ch@ammeraalbeltech.com](mailto:info-ch@ammeraalbeltech.com)

### Thailand

T +66 2 902 2604-13  
[info-th@ammeraalbeltech.com](mailto:info-th@ammeraalbeltech.com)

### Turkey

T +90 232 877 0700  
[info-tr@ammeraalbeltech.com](mailto:info-tr@ammeraalbeltech.com)

### United Kingdom

T +44 1992 500550  
[info-uk@ammeraalbeltech.com](mailto:info-uk@ammeraalbeltech.com)

### United States

T +1 847 673 6720  
[info-us@ammeraalbeltech.com](mailto:info-us@ammeraalbeltech.com)

### Vietnam

T +84 8 376 562 05  
[info-vn@ammeraalbeltech.com](mailto:info-vn@ammeraalbeltech.com)

**Expert advice, quality solutions  
and local service  
for all your belting needs**



### General contact information:

#### Ammeraal Beltech

P.O. Box 38  
1700 AA Heerhugowaard  
The Netherlands

T +31 (0)72 575 1212  
[info@ammeraalbeltech.com](mailto:info@ammeraalbeltech.com)

[ammera.com](http://ammera.com)