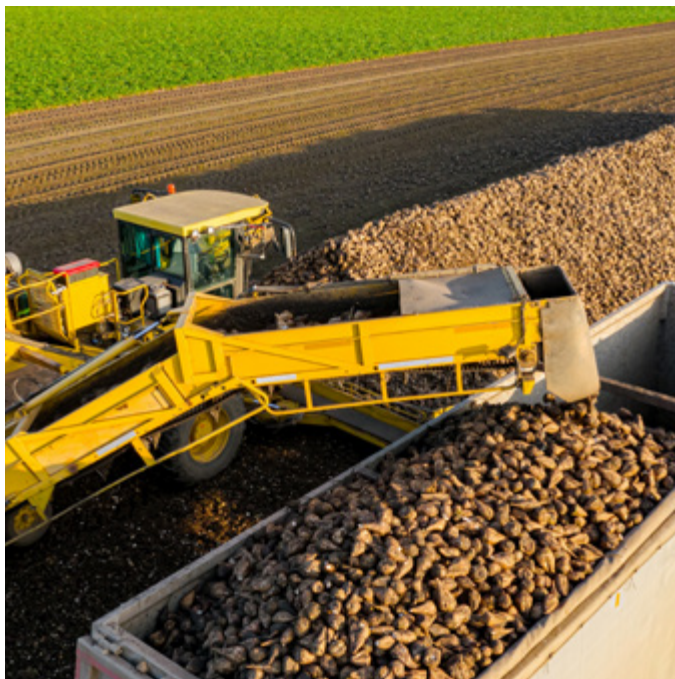


# Belts for the Agriculture Industry



# WELCOME TO **AMMERAAL BELTECH**

Established in 1950, Ammeraal Beltech is a global product brand, known for high-quality and high-performance lightweight process and conveyor systems.



**13**  
**+170**



PRODUCTION SITES IN EUROPE,  
ASIA AND AMERICA



CUSTOMER SOLUTION CENTRES

Our extensive product portfolio is available globally in over 40 countries and 170 locations to support our OEM and SEM clients' businesses in their sustainability efforts.

After decades of growth, Ammeraal Beltech continues to excel with a diverse portfolio of comprehensive conveyor belting and product handling solutions for all industry segments.



## Innovation & Service in Belting

### On-site Service

We understand the importance of keeping business operations running smoothly and we know how costly and disruptive downtime can be. That is why we offer a local service network, available around the clock and able to install and service the entire range of the Ammeraal Beltech product portfolio.

### Innovation

Ammeraal Beltech is continuously developing to meet new challenges:

- Higher operating speeds and temperatures
- Increased cleanability and durability
- Safer and more hygienic belts
- Reduced energy consumption
- Lower total cost of ownership

### Customisation

Our belting solutions are customised to meet customer requirements. We support our customers with project and belt analysis, belt selection, belt calculation and tests and of course installation.

### 24/7 Service

In addition, we ship most orders directly from our extensive stocks. If requested, we can even dispatch orders on the same day by express delivery.





## Knowing your production process

Across the globe, agricultural operations are evolving faster than ever. Efficient and automated harvesting and processing techniques maximize crop yield, reduce labour costs, and ensure crops and goods move efficiently through every stage. As farms embrace mechanized strategies to meet rising demand, the need for durable, high-performance conveyor systems has become essential.



### Specialist in your industry sector

From ploughing to sorting and grading, Ammeraal Beltech provides the best belting solutions for the agriculture industry. Through the unique combination of market expertise, experience, and engineering know-how, we are able to develop the right belt with the highest reliability, wear-resistance, and lifetime, for farms of all sizes.



## Ammeraal Beltech solutions:

### Special features for agriculture include:

- Belts engineered to operate outdoors and in tough weather conditions
- High resistance to heavy loads and abrasive materials
- Excellent durability in dusty, dirty environments
- Extended operational lifetime, reducing maintenance needs
- Design features that prevent products from slipping or falling
- Use of hygienic, food-grade materials for safety and compliance



- *Local stock*
- *Quick belt replacement*
- *Short delivery time*
- *24/7 service*

WE MAKE YOUR BUSINESS MOVE



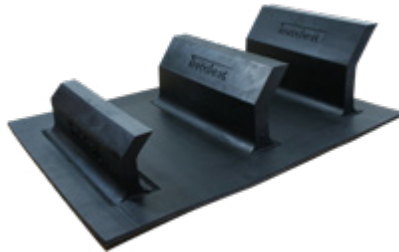
# Fit-for purpose belting solutions



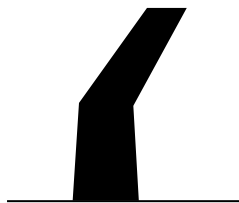
## Heavy Duty Rubber belts



T Type



C Type



TC Type

### Cleated rubber belts

Our hot-vulcanized cleated rubber belts are built for demanding environments. Through our production process, the cleats are fully integrated into the belt. Homogeneous vulcanization guarantees 100% adhesion.

#### Benefits:

- No risk of cleats detaching due to poor adhesion or weather impact
- Less sensitive to small drum diameters
- Longer lifetime and improved durability
- Cost-efficient operation
- Environmentally friendly process: no industrial adhesives used



### Profiled rubber belts (chevron belts)

Our high-grade profiled rubber belts are designed for reliable conveying of crops and materials such as beet, cereals, potatoes, onions, and fertilizers. This product range is the result of decades of expertise in belt design and manufacturing.

#### Options and customization

All Ammeraal Beltech standard cover layers are abrasion-resistant to meet DIN Y standards.

In addition to the standard range, dedicated solutions can be provided according to customer specifications (special profiles, cover layer quality, belt construction etc.). We can offer belt covers in several quality grades to match your capacity needs.

U-profiled belts help minimize common conveying issues such as:

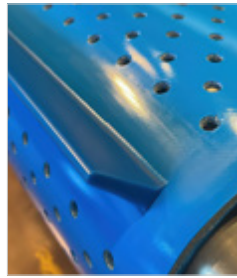
- Carryback and product loss
- Material waste
- Belt slip
- Noisy operations
- Pollution



## Synthetic belts

Harvesting requires reliable belts that minimize downtime and deliver long-lasting performance.

Our synthetic belts with good load resistance are designed for agriculture and for food factories where cleaning and sanitizing take place.



Available types include: food-grade Flexam PVC, Nonex, Ropanyl PU with accessories like cleats, ropes, etc.

Why choose them: great load resistance, resistance to oil to fat, resistance to cleaning agents. Available in green, black, and blue.

---

## Modular belts

Every post-harvest feeding process is different – that's why our modular belts can be tailored to your exact needs.



Available types include:

uni MPB and SNB series open for washing and dewatering stages

uni MPB and S-MPB closed for general conveying in abrasive applications

uni Flex for radius applications

Why choose them: modular belts are assembled in a bricklay pattern, which makes them customizable to almost any length and width. They are positive-driven, low-noise and long-lasting, with a wide range of accessories for full customization.

---

## AMMdrive

Heavy loads and bi-directional applications can cause mistracking – but not with AMMdrive, our positive-drive system with smooth covers.



Key features:

- ultimate tracking performance without tensioning
- easy plug & play installation
- no run-in time
- lower energy consumption



# Fit-for purpose belting solutions



## Pintle belts

Essential for delicate vegetables, fruit and potatoes.

Pintle belt handles your product gently, so there's less chance of damaged products and an improved yield.

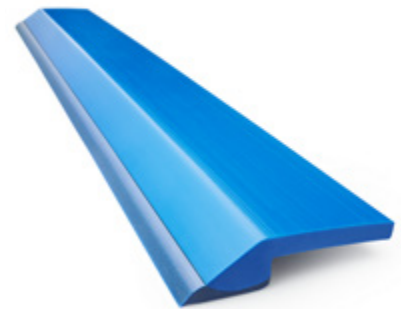
The flexible needles are shock absorbing and, in general, safeguard your quality.

Each belt is custom-made to fit your needs. The base belt is available in various types, with accessories such as guide ropes.



### Key benefits:

- The fully enclosed design – no spillage, no waste
- Self-cleaning action on the drums
- No contamination on the return side or drums
- Reduced product damage risk
- Highly wear-resistant profile



## Pulley lagging

Choosing the right drum lining extends the life of your system.

### Key benefits:

- Reduced belt tension and less wear on bearings, belt, and drums, resulting in longer service life and less risk of downtime
- Reduced mistracking and no slippage

## Finger cleats

Specifically crafted for delicate items, these cleats ensure gentle handling and proper positioning, preserving food quality.

Inclined finger cleats (100 mm) maximize food safety and efficiency in processing lines. Their unique design without a central pin enhances durability and reduces breakage, minimizing the risk of contamination. They also meet EU and FDA regulations.

## UltraScraper

When hygiene matters most, choose UltraScraper – suitable for synthetic, homogeneous, and modular belts.

### Key benefits:

- excellent cleaning efficiency,
- food-grade and metal-detectable,
- antimicrobial properties,
- longer lifetime for both belt and scraper.

## Maestro 2.0 splice equipment



Compact in size, powerful in performance. The Maestro 2.0 fits even in tight spaces – but its true strength lies in connectivity.

### Key benefits:

- integrated controller with HMI screen,
- Bluetooth connection to your mobile via a dedicated app.
- High speed, precision, efficiency, and user-friendliness – all in one.

# Fit-for-purpose Belting Solutions



## Food safety

We prioritize food safety, implementing rigorous measures to uphold hygiene standards without compromise.

Our substantial investment and innovation in X-ray and metal detectable conveyor belts solidify our leadership role, ensuring top-notch food safety throughout the production process.



Scan the QR Code  
and discover more  
on our website!

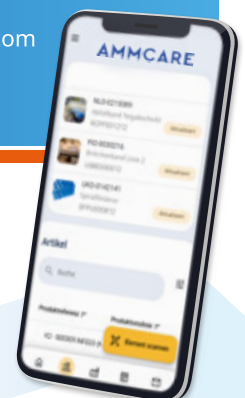
## Digitalization

## AMMCARE

Discover AMMcare  
and have all data  
about your belt at the click  
of a button!



Download from  
[ammcare.ammeraalbeltech.com](http://ammcare.ammeraalbeltech.com)



Quick quotes and order requests



Simple access to datasheets and certificates



Instant access to all belt information,  
including inspection history



Easy and direct contact with our specialists

AMMcare is not live in all countries yet.  
Please, check the availability on our website  
or contact your local representative to learn  
when you can start using AMMcare.



Test AMMcare now!



# Discover Your Local Contacts

The local partner of choice  
for sustainable conveyor belting solutions  
- around the globe.



## General contact information:

### Ammeraal Beltech

P.O. Box 38  
1700 AA Heerhugowaard  
The Netherlands



Scan the QR code  
and find your local  
contact

T +31 72 575 1212

[www.ammeraalbeltech.com](http://www.ammeraalbeltech.com)

