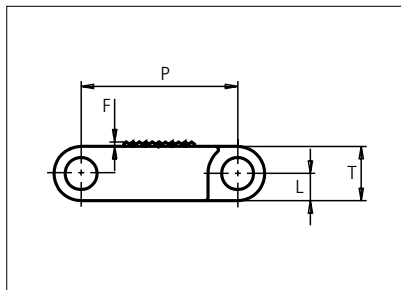




# Plastic Modular Belt

Series **uni QNB** Type **Rough**



Straight running belt  
 Nominal pitch: 25.4 mm (1.00 in)  
 Surface type: Rough Top  
 Surface opening: Closed  
 Backflex radius: 40.0 mm (1.57 in)  
 Pin diameter: 5.0 mm (0.31 in)

<b>Belt material &amp; color</b>	POM-SLF <b>B</b>		<b>mm</b>	<b>in</b>		<b>mm</b>	<b>in</b>
<b>Pin material &amp; color</b>	PP <b>B</b>	<b>P (Nominal)</b>	25.4	1.00	<b>L</b>	4.4	0.17
		<b>F</b>	0.8	0.03	<b>T</b>	8.8	0.35

Non standard material and color: See uni Material and Color Overview.

Alternative pin and lock materials: Solid Lockpin: PA6.6 **D** Pin: PP **W** PA6.6 **B** PE **W** PBT **LG** and SS304 Endlock: PA6.6 **D**  
 Lockpin: PBT **LG** PA6.6 **D** **N** PP **B** **W**

Belt width		Permissible tensile force (Belt/pin material)		Belt weight (Belt/pin material)		*Min. No. drive sprocket per shaft	Number of wear strips (Min. No.)	
		POM-SLF/PP		POM-SLF/PP			**Carry (pcs)	**Return (pcs)
mm	in	N	lbf	kg/m	lb/ft			
77	3.0	2695	606	0.6	0.43	2	2	2
153	6.0	5355	1204	1.3	0.86	2	2	2
229	9.0	8015	1802	1.9	1.29	2	2	2
305	12.0	10675	2400	2.6	1.72	3	3	2
382	15.0	13370	3006	3.2	2.16	3	3	2
458	18.0	16030	3604	3.8	2.59	4	4	2
534	21.0	18690	4202	4.5	3.01	4	4	2
610	24.0	21350	4799	5.1	3.44	5	5	3
687	27.0	24045	5405	5.8	3.88	5	5	3
763	30.0	26705	6003	6.4	4.31	6	6	3
839	33.0	29365	6601	7.0	4.74	6	6	3
915	36.0	32025	7199	7.7	5.17	7	7	4
992	39.1	34720	7805	8.3	5.60	7	7	4

Additional standard belt widths are available in steps of 76.3 mm (3.00 in). Additional non-standard belt widths are available in steps of 25.4 mm (1.00 in).

1983	78.1	69405	15602	16.7	11.19	14	14	7
------	------	-------	-------	------	-------	----	----	---

Additional standard belt widths are available in steps of 76.3 mm (3.00 in). Additional non-standard belt widths are available in steps of 25.4 mm (1.00 in).

2974	117.1	104090	23399	25.0	16.79	20	20	10
------	-------	--------	-------	------	-------	----	----	----

General belt tolerance is +0/-0.4% at 23°C/73°F and 50% RH. For exact belt width contact Customer Service. Non standard belt width on request.

\*Max. Load per Drive Sprocket. Belt material: POM-SLF 2300 N (517 lbf), PP 1300 N (292 lbf).  
 \*\*Max. Spacing between wear strips, Carry: 152.0 mm (6.00 in); Return: 304.0 mm (12.00 in).

= Single Link



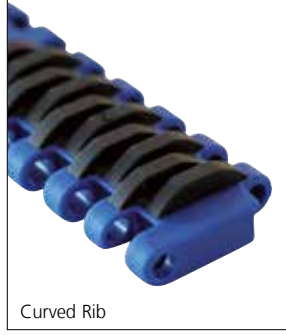
STANDARD

STRAIGHT RUNNING

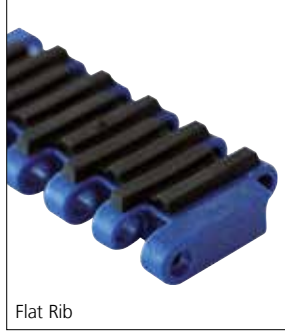
PITCH 25.4 MM/1.00 IN

## Accessories

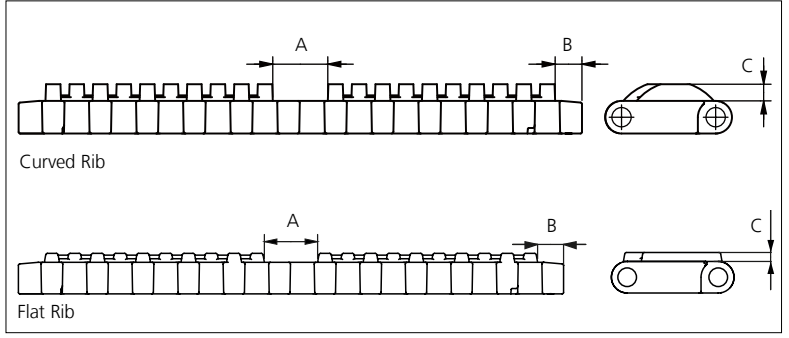
### Rubber Top



Curved Rib



Flat Rib



Curved Rib

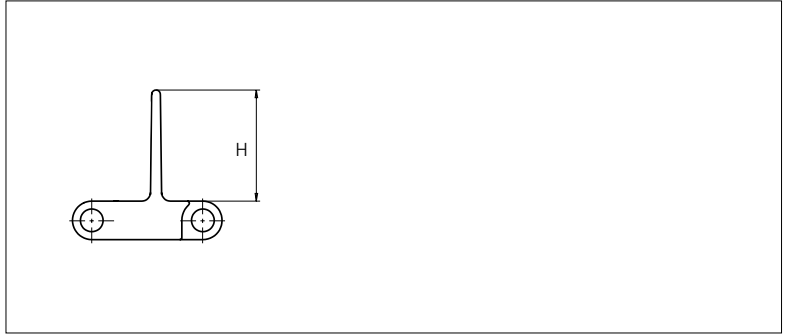
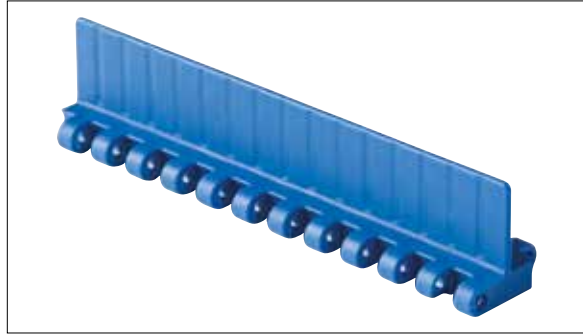
Flat Rib

Type	Belt Material & color	Rubber Material & color	A		B		C		Link size	Width	
			mm	in	mm	in	mm	in		mm	in
Curved Rib	PP <b>B</b>	03 <b>K</b>	14.9	0.59	7.3	0.29	4.5	0.18	K300	75.8	2.98
Flat Rib			14.85	0.58	7.25	0.29	2.5	0.10	K300	75.8	2.98
									K600	152.0	5.98
									K600	152.0	5.98

Non Standard material and color: See uni Material and Color Overview.

## Accessories

### Flight

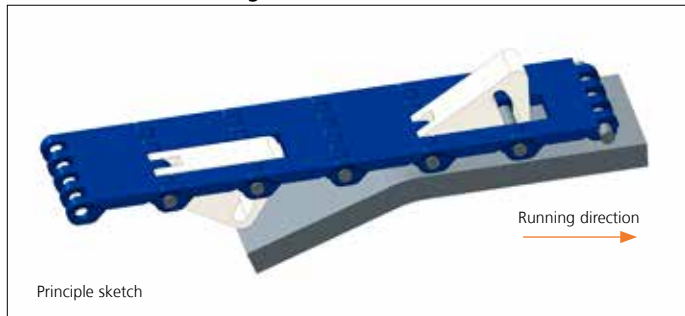


Type	Flight Material & color	H		Link size	Width		Indent	
		mm	in		mm	in	mm	in
Non Stick	PP-I <b>B W</b>	25.4	1.00	K600	152.0	5.98	0.0	0.00
	POM-SLF <b>B</b>							

Non Standard material and color: See uni Material and Color Overview.

## Accessories

### Non Standard uni AmFlight



Principle sketch

### Sprocket

No. of teeth	Bore size										Overall diameter		Pitch diameter		Hub diameter		Dimension A		Dimension B		Single row/Two way	Molded	PAG LG
	Pilot bore	1.00		1.18		1.25		1.50		1.57													
	mm	in	25.4	30.0	31.8	38.1	40.0	60.0	63.5	mm	in	mm	in	mm	in	mm	in	mm	in				
Z10	✓		●	●	●	■	●			80.3	3.16	82.2	3.24	65.0	2.56	34.7	1.36	45.5	1.79	✓	✓		
Z12	✓		●	●	●	■	■			96.8	3.81	98.1	3.86	70.0	2.76	43.0	1.69	53.5	2.11	✓	✓		
Z15	✓			●	●	■	■	■	■	121.5	4.78	122.2	4.81	70.0 100.0 104.0	2.76 3.94 4.09	55.4	2.18	65.5	2.58	✓	✓		
Z18	✓			●	●	■	■	■	■	146.0	5.75	146.3	5.76	70.0 104.0 120.0	2.76 4.09 4.72	67.6	2.66	77.5	3.05	✓	✓		
Z19	✓			●	●	■	■	■	■	154.2	6.07	154.3	6.07	70.0 120.0	2.76 4.72	71.7	2.82	81.6	3.21	✓	✓		

● Moulded sprocket   ■ Moulded sprocket   ■ Moulded sprocket

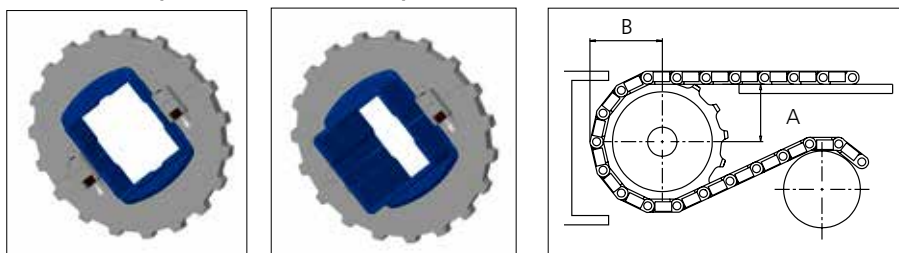


Other sprocket sizes are available upon request.  
 Round bores are always delivered with keyway.  
 Max load per sprocket shown does not take bore size into account.  
 Please also ensure that sufficient size shaft is chosen for corresponding load.  
 Other bore sizes are available upon request.  
 uni Retainer Rings: See uni Retainer Ring data sheet.  
 Width of tooth = 10.0 mm (0.39 in)  
 Width of OnePart sprocket = 25.0 mm (0.98 in)

### uni UltraFit Two-Part Sprocket

No. of teeth	Bore size					Overall diameter		Pitch diameter		Hub/adaptor diameter		Hub/adaptor width		Dimension A		Dimension B		Single row/Two way	Molded	PAG LG	Adaptor Moulded
	in	1.50	1.57	2.36	2.50																
	mm	38.1	40.0	60.0	63.5	mm	in	mm	in	mm	in	mm	in	mm	in	mm	in				
Z12		■	■			96.8	3.81	98.2	3.87	83.0	3.27	25.0 76.0	0.98 2.99	43	1.69	53.5	2.11	✓	✓	✓	
Z13		■	■			104.8	4.13	106.2	4.18	83.0	3.27	25.0 76.0	0.98 2.99	47.1	1.86	57.1	2.25	✓	✓	✓	
Z15		■	■	■	■	121.5	4.78	122.5	4.82	106.0	4.14	25.0 76.0	0.98 2.99	55.4	2.18	65.5	2.58	✓	✓	✓	
Z16		■	■	■	■	129.7	5.11	130.2	5.13	106.0	4.14	25.0 76.0	0.98 2.99	59.5	2.35	69.5	2.74	✓	✓	✓	
Z18		■	■	■	■	146.1	5.75	146.3	5.76	106.0	4.14	25.0 76.0	0.98 2.99	67.6	2.66	77.5	3.05	✓	✓	✓	
Z19		■	■	■	■	154.2	6.07	154.3	6.07	106.0	4.14	25.0 76.0	0.98 2.99	71.7	2.82	81.6	3.21	✓	✓	✓	

■ Moulded uni UltraFit TwoPart Sprocket (Narrow adaptor)   ■ Moulded uni UltraFit TwoPart Sprocket (Wide adaptor)



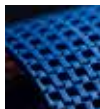
For correct sprocket position:  
 See uni Assembly Instructions for uni QNB.  
 For more detailed sprocket information contact Customer Service.



Conveyor Belts



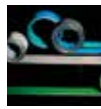
Seamless Belts



Modular Belts



Timing Belts



Transmission Belts



Fabrication & service

Expert advice, quality solutions  
and local service  
for all your belting needs  
[www.ammeraalbeltech.com](http://www.ammeraalbeltech.com)

**Ammeraal Beltech Modular A/S**  
Hjulmagervej 21  
DK-7100 Vejle

T +45 7572 3100  
F +45 7572 3348  
admin@unichains.com  
www.unichains.com

This information is subject to alteration due to continuous development. Ammeraal Beltech will not be held liable for the incorrect use of the above stated information. This information replaces previous information. All activities performed and services rendered by Ammeraal Beltech are subject to general terms and conditions of sale and delivery, as applied by its operating companies.