

SAFE & CLEAN

Ammeraal Beltech's new belt concept



SAFE & CLEAN

NEW **SAFE & CLEAN** BELTS CONCEPT WITH AMMERAAL BELTECH

Food safety is more important than ever! As a leading producer of process and conveyor belts, particularly for the food industry, Ammeraal Beltech develops new generations of products and solutions focusing on hygiene – the cornerstone of your business. Confidence in food safety is paramount when choosing a belt supplier in the food industry.

The new modular **uni UCB** (Ultra Clean Belt) and the homogeneous **Volta SuperDrive™** belts prove this. New belts made within the **SAFE & CLEAN** concept adhere to the highest levels of hygiene and cleanability.

SAFE

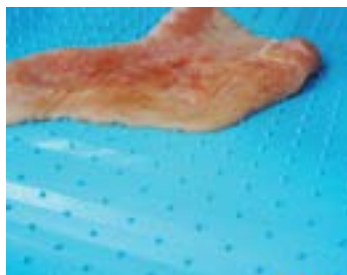
Ammeraal Beltech provides a Food Safety solution based on:

- safe products comply with international standards such as EC 1935/2004 and FDA
- belt design, colors and materials, that help you achieve your ISO 22000 requirements (previously HACCP).
- innovative solutions to avoid migration
- full belt material traceability records

CLEAN

Ammeraal Beltech provides cleanable belts:

- easy and fast cleaning of belts
- cleaning cost drastically reduced
- lowest amount of water, detergent and labour time required
- cleaning in motion possible
- control of cross contamination due to blue belt/food product





Ammeraal Beltech
member European
Hygienic Engineering
& Design Group



Food Grade belts comply
with EC 1935/2004
and FDA standards
supporting your
ISO 22000 requirements
(previously HACCP)



SAFE & CLEAN

Reduces your Cleaning Costs
and Energy Consumption

In your slaughterhouses, operational costs will drop and efficiency will improve drastically using the **SAFE & CLEAN** belt solutions: uni ECB and Volta Positive Drive belts enable you to improve hygiene to a level never seen before. Resources needed to clean the belts are reduced – less water, less energy and less man hours. uni ECB and Volta Positive Drive belts are taking cleanability one step further.

uni ECB

uni ECB offers impressive performance as a light-weight belt; it's a competitive alternative to heavier and more expensive belts.

What's more, it's easy to operate, maintain and clean. In your production environment less water and cleaning chemicals are needed, meaning lower energy costs and CO2 footprint.

Volta SuperDrive™

Volta SuperDrive™ homogeneous thermo-welded belts are designed to combine a smooth, durable surface with positive drive and tracking technology for ease of cleaning and sanitation. Materials resist cutting and gouging, require no fabric reinforcement and are designed free from entrapment areas, eliminating microbial contamination.

Belts do not require pre-tensioning, allowing the belt to operate stress-free and permitting easy access to the underside of conveyor belt and support deck.



Local Contacts

... and 150 more service contact points
at ammeraalbeltech.com

Argentina

T +54 11 4218 2906
info-ar@ammeraalbeltech.com

Australia

T +61 3 8780 6000
info-au@ammeraalbeltech.com

Austria

T +43 171728 133
info-de@ammeraalbeltech.com

Belgium

T +32 2 466 03 00
info-be@ammeraalbeltech.com

Canada

T +1 905 890 1311
info-ca@ammeraalbeltech.com

Chile

T +56 2 233 12900
info-cl@ammeraalbeltech.com

China

T +86 512 8287 2709
info-cn@ammeraalbeltech.com

Colombia

T +57 1 893 9890
info-co@ammeraalbeltech.com

Czech Republic

T +420 567 117 211
info-cz@ammeraalbeltech.com

Denmark

T + 45 7572 3100
info-dk@ammeraalbeltech.com

Finland

T +358 207 911 400
info-fi@ammeraalbeltech.com

France

T +33 3 20 90 36 00
info-fr@ammeraalbeltech.com

Germany

T +49 4152 937-0
info-de@ammeraalbeltech.com

Hungary

T +36 30 311 6099
info-hu@ammeraalbeltech.com

India

T +91 44 265 34 244
info-in@ammeraalbeltech.com

Israel

T +972 4 6371485
info-il@ammeraalbeltech.com

Italy

T +39 051 660 60 06
info-it@ammeraalbeltech.com

Japan

T +81 52 433 7400
info-jp@ammeraalbeltech.com

Luxembourg

T +352 26 48 38 56
info-lu@ammeraalbeltech.com

Malaysia

T +60 3 806 188 49
info-my@ammeraalbeltech.com

Mexico

T +52 55 5341 8131
info-mx@ammeraalbeltech.com

Netherlands

T +31 72 57 51212
info-nl@ammeraalbeltech.com

Peru

T +51 1 713 0069
info-pe@ammeraalbeltech.com

Poland

T +48 32 44 77 179
info-pl@ammeraalbeltech.com

Portugal

T +351 22 947 94 40
info-pt@ammeraalbeltech.com

Singapore

T +65 62739767
info-sg@ammeraalbeltech.com

Slovakia

T +421 255648542
info-sk@ammeraalbeltech.com

South Korea

T +82 31 448 3613-7
info-kr@ammeraalbeltech.com

Spain

T +34 93 718 3054
info-es@ammeraalbeltech.com

Sweden

T +46 (0) 10 130 96 00
info-se@ammeraalbeltech.com

Switzerland

T +41 55 2253 535
info-ch@ammeraalbeltech.com

Thailand

T +66 2 902 2604-13
info-th@ammeraalbeltech.com

Turkey

T +90 232 877 0700
info-tr@ammeraalbeltech.com

United Kingdom

T +44 1992 500550
info-uk@ammeraalbeltech.com

United States

T +1 847 673 6720
info-us@ammeraalbeltech.com

Vietnam

T +84 8 376 562 05
info-vn@ammeraalbeltech.com

**Expert advice and quality solutions
for all your belting needs.**



General contact information:

Ammeraal Beltech
P.O. Box 38
1700 AA Heerhugowaard
The Netherlands

T +31 (0)72 575 1212
info@ammeraalbeltech.com

amma.com