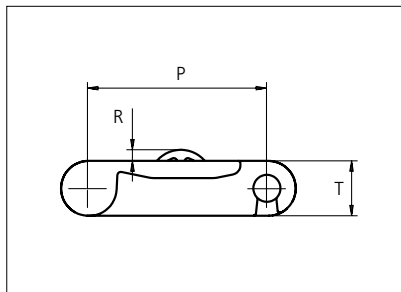




Plastic Modular Belt

Series **uni RTB** Type **M1 8% Open**

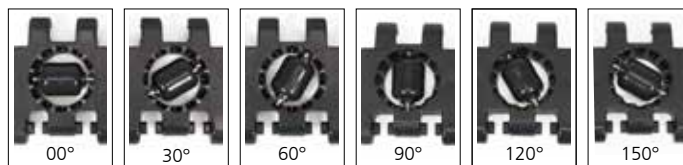


Straight running belt
 Nominal pitch: 50.8 mm (2.00 in)
 Surface type: Roller Top
 Surface opening: 8%
 Backflex radius: 65.0 mm (2.56 in)
 uni Snap link (pinless)

Belt material & color	PA6.6 DG
Roller material & color	PA6.6 DG
Pin for roller material & color	SS304

	mm	in		mm	in
P (Nominal)	50.8	2.00	T	16.0	0.63
R	3.0	0.12	-	-	-

Roller Positions



Non standard material and color: See uni Material and Color Overview.

Belt width		Permissible tensile force (Belt/pin material)		Belt weight (Belt/pin material)		*Min. No. drive sprocket per shaft	Number of wear strips (Min. No.)	
		PA6.6		PA6.6			**Carry (pcs)	**Return (pcs)
mm	in	N	lbf	kg/m	lb/ft			
154	6.1	4235	952	2.2	1.50	2	2	2
205	8.1	5638	1267	3.0	2.00	2	2	2
256	10.1	7040	1583	3.7	2.49	2	2	2
307	12.1	8443	1898	4.5	2.99	3	3	2
358	14.1	9845	2213	5.2	3.49	3	3	2
409	16.1	11248	2528	5.9	3.99	3	3	2
460	18.1	12650	2844	6.7	4.48	4	4	2
511	20.1	14053	3159	7.4	4.98	4	4	2
563	22.2	15483	3480	8.2	5.49	4	4	2
614	24.2	16885	3796	8.9	5.98	5	5	3
665	26.2	18288	4111	9.6	6.48	5	5	3

Additional standard belt widths are available in steps of 51.0 mm (2.01 in).

1993	78.5	54808	12321	28.9	19.42	14	14	7
------	------	-------	-------	------	-------	----	----	---

Additional standard belt widths are available in steps of 51.0 mm (2.01 in).

2964	116.7	81510	18323	43.0	28.88	20	20	10
------	-------	-------	-------	------	-------	----	----	----

General belt tolerance is +0/-0.4% at 23°C/73°F and 50% RH. For exact belt width contact Customer Service. Non standard belt width on request.

*Max. Load per Drive Sprocket. Belt material: PA6.6 2000 N (450 lbf).

**Max. Spacing between wear strips, Carry: 152.0 mm (6.00 in); Return: 304.0 mm (12.00 in).

= Single Link



STANDARD

STRAIGHT RUNNING

PITCH 50.8 MM/2.00 IN

Sprocket

No. of teeth	Bore size									Overall diameter		Pitch-diameter		Hub-diameter		Dimension A		Dimension B		Single row/One way	Molded	Machined
	Pilot bore																					
	mm	25.4	30.0	31.8	38.1	40.0	60.0	63.5	mm	in	mm	in	mm	in	mm	in	mm	in				
Z08	✓	●	●	●	■	●			132.9	5.23	132.8	5.23	65.0	2.56	53.3	2.10	74.6	2.93	✓	✓		
Z10	✓		●	●	■	●			166.3	6.55	164.4	6.47	65.0	2.56	70.2	2.76	90.4	3.56	✓	✓		
Z10							■	■	166.3	6.55	164.4	6.47	120.0	4.72	70.2	2.76	90.4	3.56	✓	✓		
Z12	✓		●	●	■	●			198.6	7.82	196.3	7.73	65.0	2.56	86.8	3.42	106.3	4.18	✓	✓		
Z12							■	■	198.6	7.82	196.3	7.73	120.0	4.72	86.8	3.42	106.3	4.18	✓	✓		
Z16	✓		●	●	■	●	■	■	263.8	10.39	260.4	10.25	150.0	5.90	119.7	4.71	138.3	5.44	✓		✓	

● Molded sprocket

■ Machined sprocket



Other sprocket sizes are available upon request.

Other bore sizes on sprockets are available upon request.

Round bores are always delivered with keyway.

Max. load per sprocket shown does not take bore size into account.

Please also ensure that sufficient size shaft is chosen for corresponding load.

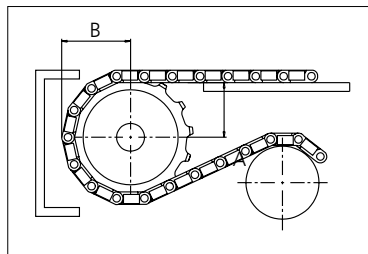
Width of tooth = Single row 9.5 mm (0.37 in)

Width of One-part sprocket = Single row: 42.3 mm (1.67 in)

uni UltraClean Two-Part Sprocket

No. of teeth	Bore size				Overall diameter		Pitch-diameter		Hub-diameter		Dimension A		Dimension B		Single row/One way	Moulded
	in	1.50	1.57	2.36												
	mm	38.1	40.0	60.0	mm	in	mm	in	mm	in	mm	in	mm	in		
Z8		■	■		132.9	5.23	132.8	5.23	80.0	3.15	53.3	2.10	74.9	2.94	✓	✓
Z10		1 ■	1 ■	2 ■	166.3	6.55	164.4	6.47	¹ 126.0 ² 118.0	¹ 4.96 ² 4.65	70.2	2.76	90.7	3.57	✓	✓
Z12		1 ■	1 ■	2 ■	198.6	7.82	196.3	7.73	¹ 126.0 ² 118.0	¹ 4.96 ² 4.65	86.8	3.42	106.6	4.19	✓	✓

■ Moulded uni UltraClean TwoPart Sprocket



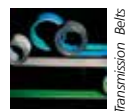
Width of UltraClean Two-part sprocket = Single row: 44.0 mm (1.73 in)

Width of UltraClean Two-part sprocket, tooth = Single row: 9.5 mm (0.37 in)

uni Retainer Rings: See uni Retainer Ring data sheet.

For correct sprocket position: See uni Assembly Instructions for uni RTB.

For more detailed sprocket information, contact Customer Service.



Expert advice, quality solutions and local service for all your belting needs
www.ammeraalbeltech.com

Ammeraal Beltech Modular A/S
Hjulgagervej 21
DK-7100 Vejle

T +45 7572 3100
F +45 7572 3348
admin@unichains.com
www.unichains.com

This information is subject to alteration due to continuous development. Ammeraal Beltech will not be held liable for the incorrect use of the above stated information. This information replaces previous information. All activities performed and services rendered by Ammeraal Beltech are subject to general terms and conditions of sale and delivery, as applied by its operating companies.