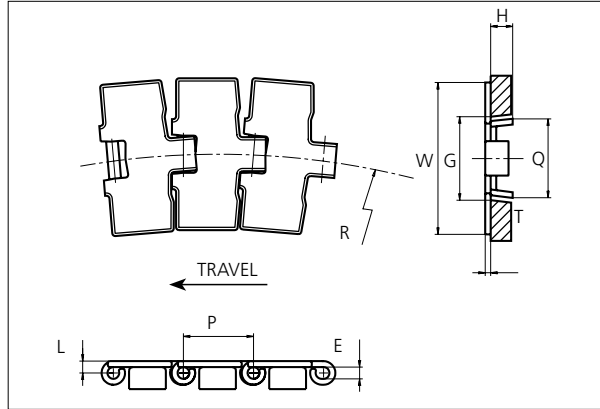




Slat Top Stainless Steel Chain

Series **uni 881** Type **Bevel**



Slat Top Stainless Steel Chain

Side flexing chain
Pitch: 38.1 mm (1.50 in)
Backflex radius:
76.2 mm (3.00 in)

Standard shipping lengths:
coils of 80 links
= 3.048 m (10.0 ft)

NON STANDARD

| E | | G* | | G** | | H | | L | | P | | Q | | T | |
|-----|------|------|------|------|------|------|------|-----|------|------|------|------|------|-----|------|
| mm | in | mm | in | mm | in | mm | in | mm | in | mm | in | mm | in | mm | in |
| 6.4 | 0.25 | 41.3 | 1.63 | 46.6 | 1.83 | 11.2 | 0.44 | 6.5 | 0.26 | 38.1 | 1.50 | 43.0 | 1.69 | 3.0 | 0.12 |

*Curve, ** Straight

| | Width (W) | | Min. radius (R) | | Weight | | Permissible tensile strength N/lbf | Chain material | Pin material* | Surface | |
|-------------|-----------|------|-----------------|-------|--------|-------|------------------------------------|--|--|-----------|----------|
| | mm | in | mm | in | kg/m | lb/ft | | | | Roughness | Hardness |
| K325 | 82.6 | 3.25 | 457 | 17.99 | 2.90 | 1.95 | 2250 / 506 | AISI 430 (Work hardened ferritic Stainless Steel) | AISI 431 (Work hardened magnetic Stainless Steel) | < 0.5 µm | 20 HRC |
| K450 | 114.3 | 4.50 | 500 | 19.69 | 3.60 | 2.42 | | | | | |
| K750 | 190.5 | 7.50 | 500 | 19.69 | 5.30 | 3.56 | | | | | |

* Chains with special hardened pin (HP) for additional wear resistance and higher corrosion strength are made to order.

SIDE FLEXING

PITCH 38.1 MM/1.50 IN

Sprocket

| No of teeth | Pitch diameter | | Overall-diameter | | Min. ø bore | | Max. ø bore | | Hub-diameter | | A-dimension | | B-dimension | | Molded PA6 LG | Molded Cast Iron | Machined PA6 |
|-------------|----------------|------|------------------|------|-------------|------|-------------|------|--------------|------|-------------|------|-------------|------|---------------|------------------|--------------|
| | mm | in | mm | in | mm | in | mm | in | mm | in | mm | in | mm | in | | | |
| Z19 | 117.3 | 4.62 | 117.0 | 4.61 | 20.0 | 0.79 | 40.0 | 1.57 | 58.0 | 2.28 | 58.7 | 2.31 | 64.5 | 2.54 | ✓ | ✓ | |
| Z21 | 129.2 | 5.09 | 130.0 | 5.12 | 20.0 | 0.79 | 40.0 | 1.57 | 58.0 | 2.28 | 65.0 | 2.56 | 70.5 | 2.78 | ✓ | ✓ | |
| Z23 | 141.2 | 5.56 | 142.0 | 5.59 | 20.0 | 0.79 | 40.0 | 1.57 | 58.0 | 2.28 | 71.2 | 2.80 | 76.5 | 3.01 | ✓ | ✓ | |
| Z25 | 153.2 | 6.03 | 155.0 | 6.10 | 20.0 | 0.79 | 40.0 | 1.57 | 58.0 | 2.28 | 77.4 | 3.05 | 82.5 | 3.25 | ✓ | ✓ | |
| Z27 | 165.2 | 6.50 | 167.0 | 6.57 | 20.0 | 0.79 | 70.0 | 2.76 | n/a | n/a | 83.6 | 3.29 | 88.5 | 3.48 | | ✓ | ✓ |
| Z29 | 177.2 | 6.98 | 179.0 | 7.05 | 20.0 | 0.79 | 70.0 | 2.76 | n/a | n/a | 89.8 | 3.54 | 94.6 | 3.72 | | ✓ | ✓ |
| Z31 | 189.3 | 7.45 | 192.0 | 7.56 | 20.0 | 0.79 | 70.0 | 2.76 | n/a | n/a | 95.9 | 3.78 | 100.6 | 3.96 | | ✓ | ✓ |

Two part sprocket

| No of teeth | Pitch diameter | | Overall-diameter | | Min. ø bore | | Max. ø bore | | Hub-diameter | | A-dimension | | B-dimension | | Molded PA6 LG |
|-------------|----------------|------|------------------|------|-------------|------|-------------|------|--------------|------|-------------|------|-------------|------|---------------|
| | mm | in | mm | in | mm | in | mm | in | mm | in | mm | in | mm | in | |
| Z19 | 117.3 | 4.62 | 117.0 | 4.61 | 20.0 | 0.79 | 40.0 | 1.57 | 58.0 | 2.28 | 58.7 | 2.31 | 64.5 | 2.54 | ✓ |
| Z21 | 129.2 | 5.09 | 130.0 | 5.12 | 20.0 | 0.79 | 40.0 | 1.57 | 58.0 | 2.28 | 65.0 | 2.56 | 70.5 | 2.78 | ✓ |
| Z23 | 141.2 | 5.56 | 142.0 | 5.59 | 20.0 | 0.79 | 40.0 | 1.57 | 58.0 | 2.28 | 71.2 | 2.80 | 76.5 | 3.01 | ✓ |
| Z25 | 153.2 | 6.03 | 155.0 | 6.10 | 20.0 | 0.79 | 40.0 | 1.57 | 58.0 | 2.28 | 77.4 | 3.05 | 82.5 | 3.25 | ✓ |

Molded sprocket



Cast iron sprocket



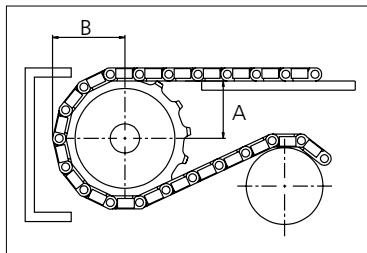
Machined sprocket



Two part sprocket



Non standard material and color:
See uni Material and Color Overview.



Please ensure that sufficient size shaft and keyway are chosen for corresponding load.

Other sprocket sizes are available upon request

Width of tooth: 31.8 mm/1.25 in

Width of sprocket: 42.3 mm/1.67 in

uni Retainer Rings: See uni Retainer Ring data sheet

uni Guide Rings can be mounted on cast iron and machined sprockets. See uni Guide Rings data sheet



Conveyor Belts



Seamless Belts



Modular Belts



Timing Belts



Transmission Belts



Fabrication & service

Expert advice, quality solutions and local service for all your belting needs
www.ammeraalbeltech.com

Ammeraal Beltech Modular A/S
Hjulmagervej 21
DK-7100 Vejle

T +45 7572 3100
F +45 7572 3348
admin@unichains.com
www.unichains.com

This information is subject to alteration due to continuous development. Ammeraal Beltech will not be held liable for the incorrect use of the above stated information. This information replaces previous information. All activities performed and services rendered by Ammeraal Beltech are subject to general terms and conditions of sale and delivery, as applied by its operating companies.