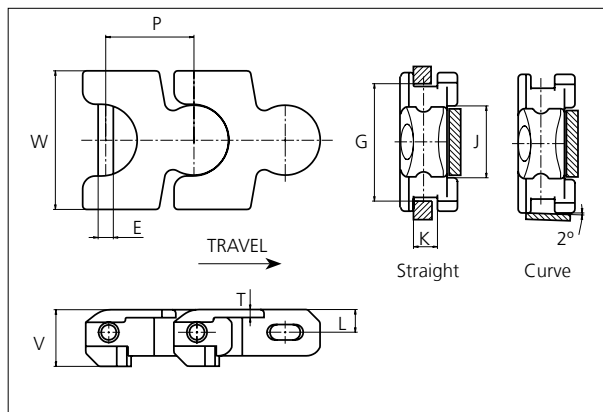




uni Flex Plastic Chain

Series **uni 2700** Type -



uni Flex Plastic Chain

Side flexing chain
Pitch: 70.0 mm (2.76 in)
Backflex radius:
200.0 mm (8.00 in)
Permissible tensile strength:
POM material:
11000 N (2473 lbf)

Standard shipping lengths:
boxes of 72 links
= 5.040 m (16.5 ft)

E		G		J		K		L		P		T		V	
mm	in	mm	in	mm	in	mm	in	mm	in	mm	in	mm	in	mm	in
12.0	0.47	92.0	3.64	57.0	2.24	19.0	0.75	18.5	0.71	70.0	2.76	6.3	0.25	45.0	1.77

All dimensions are for chains in POM material.

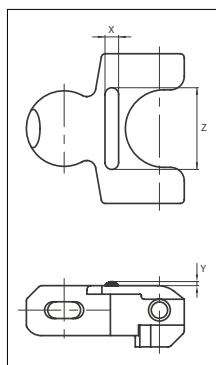
Width (W)		Material & color	Pin material	Weight		Min. radius (R)	
mm	in			kg/m	lb/ft	mm	in
110.0	4.33	POM-D W POM-LF BR	SS304	4.6	3.09	300.0	11.81

Non standard material and color: See uni Material and Color Overview.

Non standard pin material: See uni Material and Color Overview.

Accessories

Rubber Top/NON STANDARD



When ordering, please state the required distance between the Rubber Top.

Other Non Standard rubber profiles:
See uni Rubber Profile Overview

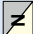
Link material	Rubber material	Z		X		Y	
		mm	in	mm	in	mm	in
POM-D W	05 I	10.0	0.39	60.0	2.36	3.0	0.12

STANDARD

SIDE FLEXING

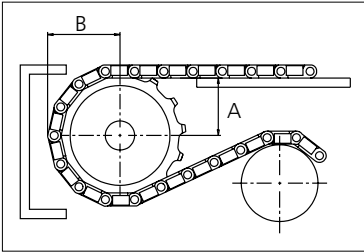
PITCH 70.0 MM/2.76 IN

Sprocket

No of teeth	Pitch diameter		Overall-diameter		Min. ø bore		Max. ø bore		Hub-diameter		Dimension A		Dimension B		 Machined PAG
	mm	in	mm	in	mm	in	mm	in	mm	in	mm	in	mm	in	
Z8	182.8	7.20	184.0	7.24	20.0	0.79	50.0	1.97	120.0	4.72	65.1	2.56	116.7	4.59	✓
Z10	226.4	8.91	227.6	8.96	20.0	0.79	50.0	1.97	120.0	4.72	88.3	3.48	137.6	5.42	✓

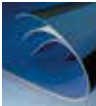
Non standard material and color:
See uni Material and Color Overview.

Machined sprocket



Please ensure that sufficient size shaft and keyway are chosen for corresponding load.

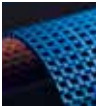
Other sprocket sizes are available upon request
Width of tooth: 15.0 mm/0.60 in
Width of sprocket: 42.3 mm/1.70 in
uni Retainer Rings: See uni Retainer Ring datasheet



Synthetic Belts



Endless Woven Belts



Modular Belts



Engineered Belts



Homogeneous Belts



Fabrication & Service

Expert advice and quality solutions
for all your belting needs.
ammeraalbeltech.com
eptool.online

Ammeraal Beltech Modular A/S
Hjulmagervej 21
DK-7100 Vejle
T +45 7572 3100

ammega.com

This information is subject to alteration due to continuous development. Ammeraal Beltech will not be held liable for the incorrect use of the above stated information. This information replaces previous information. All activities performed and services rendered by Ammeraal Beltech are subject to general terms and conditions of sale and delivery, as applied by its operating companies.