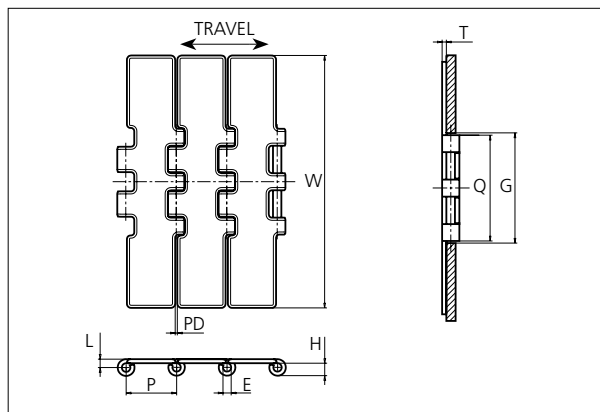




# Slat Top Stainless Steel Chain

Series **uni 805 PLUS<sup>+</sup>** Type **Double Hinge**



## Slat Top Stainless Steel Chain

Straight running chain  
Pitch: 38.1 mm (1.50 in)  
Backflex radius:  
150.0 mm (5.91 in)

Standard shipping lengths:  
coils of 80 links  
= 3.048 m (10.0 ft)

| E   |      | G    |      | H   |      | L   |      | P    |      | Q    |      | T   |      | PD  |      |
|-----|------|------|------|-----|------|-----|------|------|------|------|------|-----|------|-----|------|
| mm  | in   | mm   | in   | mm  | in   | mm  | in   | mm   | in   | mm   | in   | mm  | in   | mm  | in   |
| 6.4 | 0.25 | 82.5 | 3.25 | 9.9 | 0.39 | 6.5 | 0.26 | 38.1 | 1.50 | 80.5 | 3.17 | 3.0 | 0.12 | 1.6 | 0.06 |

|             | Width (W) |      | Weight |       | Permissible<br>tensile strength<br>N/lbf | Chain<br>material   | Pin<br>material*   | Surface   |          |
|-------------|-----------|------|--------|-------|--|---|--|-----------|----------|
|             | mm        | in   | kg/m   | lb/ft |  |   |  | Roughness | Hardness |
| <b>K750</b> | 190.5     | 7.50 | 5.80   | 3.90  | 4500 / 1012                              | S420 35<br>(Special Work<br>hardened<br>Crome-nickel ferritic<br>Stainless Steel) | AISI 431<br>(Work hardened<br>magnetic<br>Stainless Steel) | < 0.3 µm  | 30 HRC   |

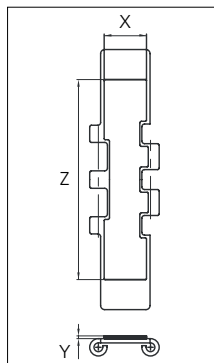
\* Chains with special hardened pin (HP) for additional wear resistance and higher corrosion strength are made to order.

## Accessories

### Rubber Top



Non stock item. Contact Customer  
Service for delivery time.



| Width       | Rubber<br>material | Z     |      | X    |      | Y   |      |
|-------------|--------------------|-------|------|------|------|-----|------|
|             |                    | mm    | in   | mm   | in   | mm  | in   |
| <b>K750</b> | 06 <b>K</b>        | 140.0 | 5.51 | 24.5 | 0.96 | 3.0 | 0.12 |

STANDARD

STRAIGHT RUNNING

PITCH 38.1 MM/1.50 IN

## Sprocket

| No. of teeth | Pitch diameter |      | Overall diameter |      | Min. ø bore |      | Max. ø bore |      | Hub diameter |      | Dimension A |      | Dimension B |      | Molded | Machined |
|--------------|----------------|------|------------------|------|-------------|------|-------------|------|--------------|------|-------------|------|-------------|------|--------|----------|
|              | mm             | in   | mm               | in   | mm          | in   | mm          | in   | mm           | in   | mm          | in   | mm          | in   |        |          |
| Z19          | 117.3          | 4.62 | 117.0            | 4.61 | 20.0        | 0.79 | 40.0        | 1.57 | 58.0         | 2.28 | 58.7        | 2.31 | 64.5        | 2.54 | ✓      | ✓        |
| Z21          | 129.2          | 5.09 | 130.0            | 5.12 | 20.0        | 0.79 | 40.0        | 1.57 | 58.0         | 2.28 | 65.0        | 2.56 | 70.5        | 2.78 | ✓      | ✓        |
| Z23          | 141.2          | 5.56 | 142.0            | 5.59 | 20.0        | 0.79 | 40.0        | 1.57 | 58.0         | 2.28 | 71.2        | 2.80 | 76.5        | 3.01 | ✓      | ✓        |
| Z25          | 153.2          | 6.03 | 155.0            | 6.10 | 20.0        | 0.79 | 40.0        | 1.57 | 58.0         | 2.28 | 77.4        | 3.05 | 82.5        | 3.25 | ✓      | ✓        |
| Z27          | 165.2          | 6.50 | 167.0            | 6.57 | 20.0        | 0.79 | 70.0        | 2.76 | n/a          | n/a  | 83.6        | 3.29 | 88.5        | 3.48 | ✓      | ✓        |
| Z29          | 177.2          | 6.98 | 179.0            | 7.05 | 20.0        | 0.79 | 70.0        | 2.76 | n/a          | n/a  | 89.8        | 3.54 | 94.6        | 3.72 | ✓      | ✓        |
| Z31          | 189.3          | 7.45 | 192.0            | 7.56 | 20.0        | 0.79 | 70.0        | 2.76 | n/a          | n/a  | 95.9        | 3.78 | 100.6       | 3.96 | ✓      | ✓        |

## Two part sprocket

| No. of teeth | Pitch diameter |      | Overall diameter |      | Min. ø bore |      | Max. ø bore |      | Hub diameter |      | Dimension A |      | Dimension B |      | Molded |
|--------------|----------------|------|------------------|------|-------------|------|-------------|------|--------------|------|-------------|------|-------------|------|--------|
|              | mm             | in   | mm               | in   | mm          | in   | mm          | in   | mm           | in   | mm          | in   | mm          | in   |        |
| Z25          | 153.2          | 6.03 | 155.0            | 6.10 | 20.0        | 0.79 | 40.0        | 1.57 | 58.0         | 2.28 | 77.4        | 3.05 | 82.5        | 3.25 | ✓      |

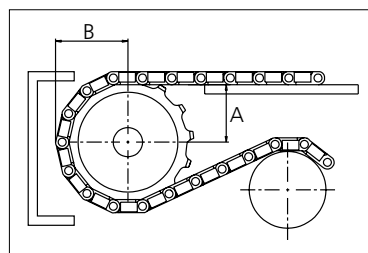
Cast iron sprocket



Machined sprocket



Molded two part sprocket



Please ensure that sufficient size shaft and keyway are chosen for corresponding load.

Non standard material and color:  
See uni Material and Color Overview.

Other sprocket sizes are available upon request

Width of tooth: 79.4 mm/3.13 in

Width of sprocket: 79.4 mm/3.13 in

Width of cast iron sprocket: 41.3 mm/1.63 in

uni Retainer Rings: See uni Retainer Ring data sheet

uni Idler: See uni Idler data sheet

uni Guide Rings can be mounted on cast iron and machined sprockets. See uni Guide Rings data sheet

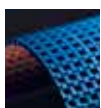
uni 805 Plus+ Double Hinge/2016.06.21



Synthetic Belts



Endless Woven Belts



Modular Belts



Engineered Belts



Homogeneous Belts



Fabrication & Service

Expert advice and quality solutions  
for all your belting needs.  
ammeraalbeltech.com

Ammeraal Beltech Modular A/S  
Hjulgagervej 21  
DK-7100 Vejle  
T +31 7572 3100

ammerga.com

This information is subject to alteration due to continuous development. Ammeraal Beltech will not be held liable for the incorrect use of the above stated information. This information replaces previous information. All activities performed and services rendered by Ammeraal Beltech are subject to general terms and conditions of sale and delivery, as applied by its operating companies.

Member of Ammega Group.