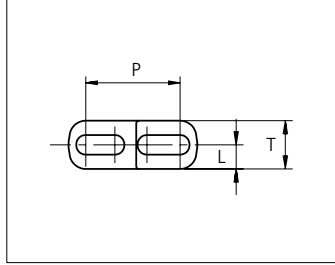
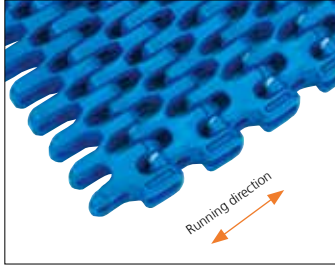




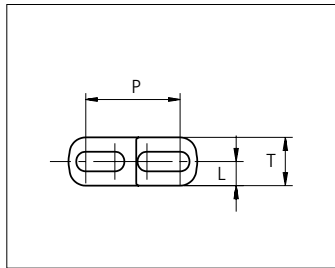
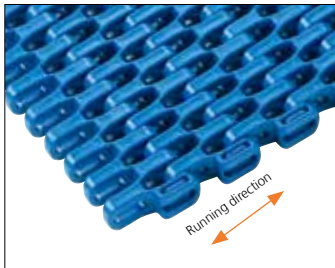
Plastic Modular Belt

Series uni Flex SNB

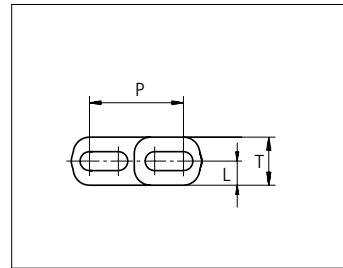
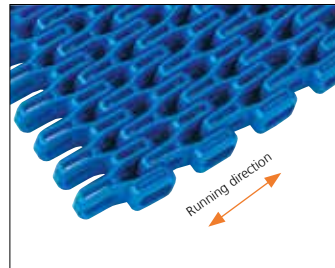


Sideflexing belt
 Nominal pitch: 25.4 mm (1.00 in)
 Surface type: Flat
 Surface opening: 47%/55%
 Backflex radius: 25.0 mm (0.98 in)
 Pin diameter: 5.0 mm (0.20 in)
 Min. inside radius: R1.6 x belt width. R2.3 x belt width

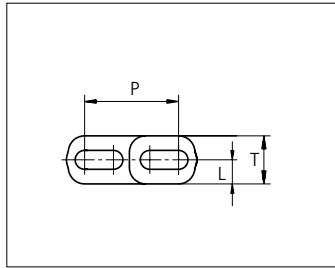
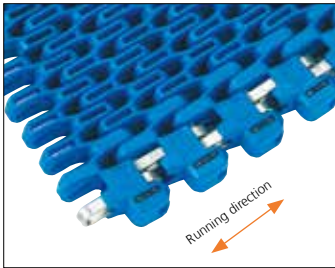
uni Flex SNB CR R1.6
 Surface Opening: 47%



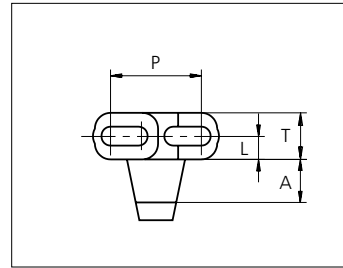
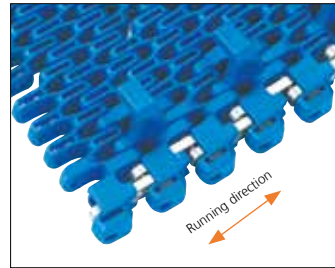
uni Flex SNB C R2.3
 Surface Opening: 47%



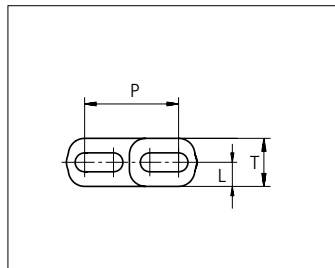
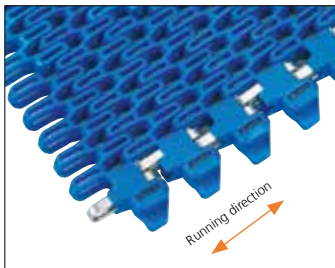
uni Flex SNB L R2.3
 Surface Opening: 55%



uni Flex SNB W R2.3
 Surface Opening: 55%



uni Flex SNB WT R2.3
 Surface Opening: 55%

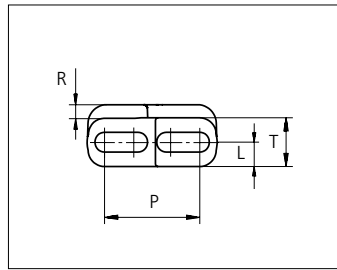
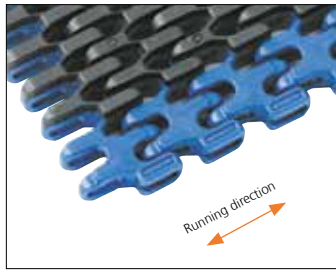


uni Flex SNB WO R2.3
 Surface Opening: 55%

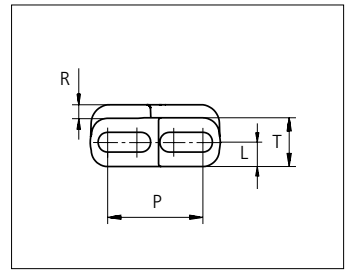
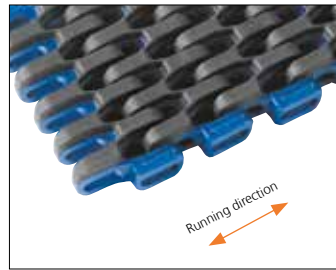
| | mm | in | | mm | in |
|--------------------|------|------|----------|------|------|
| P (Nominal) | 25.4 | 1.00 | L | 6.5 | 0.26 |
| A | 12.0 | 0.47 | T | 13.0 | 0.51 |

STANDARD
 SIDE FLEXING
 PITCH 25.4 MM/1.00 IN

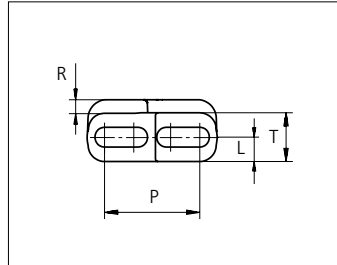
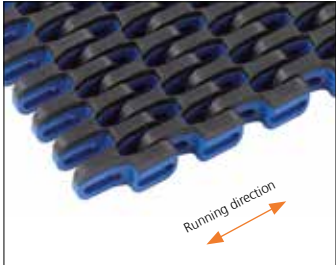




uni Flex SNB CR Rubber Top R1.6
Surface Opening: 47%



uni Flex SNB CI Rubber Top R2.3
Surface Opening: 47%



uni Flex SNB C Rubber Top R2.3
Surface Opening: 47%

| | mm | in | | mm | in |
|--------------------|------|------|----------|------|------|
| P (Nominal) | 25.4 | 1.00 | R | 3.0 | 0.12 |
| L | 6.5 | 0.26 | T | 13.0 | 0.51 |

Indent uni Flex SNB CR Rubber Top R1.6 is 26.5 mm (1.04 in). uni Flex SNB CI Rubber Top R2.3 is 7.0 mm (0.28 in). uni Flex SNB C Rubber Top R2.3 is available without indent.

| Type | Belt materials and colors | Pin materials and colors |
|---|---------------------------|--------------------------|
| uni Flex SNB CR R1.6 uni Flex SNB C R2.3 uni Flex SNB L R2.3* | POM-D B W | PBT LG |
| | PP B W | |
| | PA6.6 B W | |
| uni Flex SNB W uni Flex SNB WO | PA6.6 B W | SS304 |
| uni Flex SNB WT | PA6.6 B W | SS304 |
| | | PBT LG |
| uni Flex SNB CR Rubber Top R1.6 uni Flex SNB CI Rubber Top R2.3 uni Flex SNB C Rubber Top R2.3 | PP B + 03 K | PBT LG |
| | PP W + 03 N | |

Standard materials and colors

Lockingplates PA6.6 + PP **W** **B**

Wearpart and O-Tab PA6.6 **W** **B**

For high speed or load abrasive applications:

Wearpart and O-Tab POM-DK **Y**

Non standard material and color: See uni Material and Color Overview.

Alternative pin materials: PA6.6 **B** **N**

uni Flex SNB CR R1.6

| Belt width | | Permissible tensile force (Belt/pin material) | | | | | | | | | | | | Belt weight (Belt/pin material) | | | | | | *Min No. drive sprocket per shaft | Number of wear strips (Min. No.) | |
|------------|------|--|------|----------------|-----|-------------------|------|----------------|-----|-------------------|------|----------------|-----|------------------------------------|-------|--------|-------|-----------|-------|-----------------------------------|----------------------------------|----------------|
| | | POM-D/PBT | | | | PP/PBT | | | | PA6.6/PBT | | | | POM-D /PBT | | PP/PBT | | PA6.6/PBT | | | **Carry (pcs) | **Return (pcs) |
| | | Straight sections | | Curve sections | | Straight sections | | Curve sections | | Straight sections | | Curve sections | | | | | | | | | | |
| mm | in | N | lbf | N | lbf | N | lbf | N | lbf | N | lbf | N | lbf | kg/m | lb/ft | kg/m | lb/ft | kg/m | lb/ft | | | |
| 153 | 6.0 | 4590 | 1032 | 600 | 135 | 2295 | 516 | 600 | 135 | 4590 | 1032 | 600 | 135 | 1.2 | 0.79 | 0.8 | 0.56 | 1.0 | 0.66 | 2 | 2 | 2 |
| 229 | 9.0 | 6870 | 1544 | 600 | 135 | 3435 | 772 | 600 | 135 | 6870 | 1544 | 600 | 135 | 1.8 | 1.19 | 1.2 | 0.83 | 1.5 | 0.98 | 2 | 2 | 2 |
| 305 | 12.0 | 9150 | 2057 | 600 | 135 | 4575 | 1028 | 600 | 135 | 9150 | 2057 | 600 | 135 | 2.3 | 1.58 | 1.6 | 1.11 | 2.0 | 1.31 | 3 | 3 | 2 |
| 381 | 15.0 | 11430 | 2569 | 600 | 135 | 5715 | 1285 | 600 | 135 | 11430 | 2569 | 600 | 135 | 2.9 | 1.97 | 2.1 | 1.38 | 2.4 | 1.64 | 3 | 3 | 2 |
| 457 | 18.0 | 13710 | 3082 | 600 | 135 | 6855 | 1541 | 600 | 135 | 13710 | 3082 | 600 | 135 | 3.5 | 2.36 | 2.5 | 1.66 | 2.9 | 1.97 | 5 | 4 | 2 |
| 534 | 21.0 | 16020 | 3601 | 600 | 135 | 8010 | 1801 | 600 | 135 | 16020 | 3601 | 600 | 135 | 4.1 | 2.76 | 2.9 | 1.94 | 3.4 | 2.30 | 5 | 4 | 2 |
| 610 | 24.0 | 18300 | 4114 | 600 | 135 | 9150 | 2057 | 600 | 135 | 18300 | 4114 | 600 | 135 | 4.7 | 3.16 | 3.3 | 2.21 | 3.9 | 2.62 | 5 | 5 | 3 |
| 686 | 27.0 | 20580 | 4626 | 600 | 135 | 10290 | 2313 | 600 | 135 | 20580 | 4626 | 600 | 135 | 5.3 | 3.55 | 3.7 | 2.49 | 4.4 | 2.95 | 5 | 5 | 3 |
| 762 | 30.0 | 22860 | 5139 | 600 | 135 | 11430 | 2569 | 600 | 135 | 22860 | 5139 | 600 | 135 | 5.9 | 3.94 | 4.1 | 2.77 | 4.9 | 3.28 | 7 | 6 | 3 |
| 838 | 33.0 | 25140 | 5651 | 600 | 135 | 12570 | 2826 | 600 | 135 | 25140 | 5651 | 600 | 135 | 6.5 | 4.34 | 4.5 | 3.04 | 5.4 | 3.60 | 7 | 6 | 3 |
| 914 | 36.0 | 27420 | 6164 | 600 | 135 | 13710 | 3082 | 600 | 135 | 27420 | 6164 | 600 | 135 | 7.0 | 4.73 | 4.9 | 3.32 | 5.8 | 3.93 | 7 | 7 | 4 |
| 990 | 39.0 | 29700 | 6677 | 600 | 135 | 14850 | 3338 | 600 | 135 | 29700 | 6677 | 600 | 135 | 7.6 | 5.12 | 5.3 | 3.59 | 6.3 | 4.26 | 7 | 7 | 4 |
| 1067 | 42.0 | 32010 | 7196 | 600 | 135 | 16005 | 3598 | 600 | 135 | 32010 | 7196 | 600 | 135 | 8.2 | 5.52 | 5.8 | 3.87 | 6.8 | 4.59 | 9 | 8 | 4 |
| 1143 | 45.0 | 34290 | 7708 | 600 | 135 | 17145 | 3854 | 600 | 135 | 34290 | 7708 | 600 | 135 | 8.8 | 5.91 | 6.2 | 4.15 | 7.3 | 4.92 | 9 | 8 | 4 |

Additional non-standard belt widths are available in steps of 12.7 mm (0.50 in).

General belt tolerance is +0/-0.4% at 23°C/73°F. For exact belt width contact Customer Service. Non standard belt width on request.

Flex SNB-CR locked with wearpart or O-tabs both sides are 6.0 mm (0.24 in) wider than the dimensions in the table above.

*Max. Load per Drive Sprocket. Belt material: POM-D 1000 N (225 lbf). PP 850 N (191 lbf). PA6.6 1000 N (225 lbf).

**Max. Spacing between wear strips. Carry: 152.0 mm (6.00 in); Return: 304.0 mm (12.00 in).

uni Flex SNB C R2.3 / uni Flex SNB L R2.3

| Belt width | | Permissible tensile force (Belt/pin material) | | | | | | | | | | | | Belt weight (Belt/pin material) | | | | | | *Min No. drive sprocket per shaft | Number of wear strips (Min. No.) | |
|------------|------|--|------|----------------|-----|-------------------|------|----------------|-----|-------------------|------|----------------|-----|------------------------------------|-------|-----------|-------|---------------|----------------|-----------------------------------|----------------------------------|---|
| | | POM-D/PBT | | | | PP/PBT | | | | PA6.6/PBT | | | | PP/PBT | | PA6.6/PBT | | **Carry (pcs) | **Return (pcs) | | | |
| | | Straight sections | | Curve sections | | Straight sections | | Curve sections | | Straight sections | | Curve sections | | | | | | | | | | |
| mm | in | N | lbf | N | lbf | N | lbf | N | lbf | N | lbf | N | lbf | kg/m | lb/ft | kg/m | lb/ft | kg/m | lb/ft | | | |
| 76 | 3.0 | 2280 | 513 | 1000 | 225 | 1140 | 256 | 600 | 135 | 2280 | 513 | 1000 | 225 | 0.5 | 0.35 | 0.4 | 0.25 | 0.4 | 0.30 | 2 | 2 | 2 |
| 152 | 6.0 | 4561 | 1025 | 1000 | 225 | 2281 | 513 | 600 | 135 | 4561 | 1025 | 1000 | 225 | 1.0 | 0.71 | 0.7 | 0.49 | 0.9 | 0.59 | 2 | 2 | 2 |
| 228 | 9.0 | 6842 | 1538 | 1000 | 225 | 3421 | 769 | 600 | 135 | 6842 | 1538 | 1000 | 225 | 1.6 | 1.06 | 1.1 | 0.74 | 1.3 | 0.89 | 2 | 2 | 2 |
| 304 | 12.0 | 9124 | 2051 | 1000 | 225 | 4562 | 1025 | 600 | 135 | 9124 | 2051 | 1000 | 225 | 2.1 | 1.41 | 1.5 | 0.98 | 1.8 | 1.19 | 3 | 3 | 2 |
| 380 | 15.0 | 11405 | 2564 | 1000 | 225 | 5702 | 1282 | 600 | 135 | 11405 | 2564 | 1000 | 225 | 2.6 | 1.76 | 1.8 | 1.23 | 2.2 | 1.48 | 3 | 3 | 2 |
| 456 | 18.0 | 13686 | 3077 | 1000 | 225 | 6843 | 1538 | 600 | 135 | 13686 | 3077 | 1000 | 225 | 3.1 | 2.12 | 2.2 | 1.47 | 2.6 | 1.78 | 5 | 4 | 2 |
| 532 | 21.0 | 15967 | 3589 | 1000 | 225 | 7984 | 1795 | 600 | 135 | 15967 | 3589 | 1000 | 225 | 3.7 | 2.47 | 2.6 | 1.72 | 3.1 | 2.07 | 5 | 4 | 2 |
| 608 | 23.9 | 18248 | 4102 | 1000 | 225 | 9124 | 2051 | 600 | 135 | 18248 | 4102 | 1000 | 225 | 4.2 | 2.82 | 2.9 | 1.96 | 3.5 | 2.37 | 5 | 5 | 3 |
| 684 | 26.9 | 20530 | 4615 | 1000 | 225 | 10265 | 2308 | 600 | 135 | 20530 | 4615 | 1000 | 225 | 4.7 | 3.17 | 3.3 | 2.21 | 4.0 | 2.67 | 5 | 5 | 3 |
| 760 | 29.9 | 22811 | 5128 | 1000 | 225 | 11405 | 2564 | 600 | 135 | 22811 | 5128 | 1000 | 225 | 5.2 | 3.53 | 3.6 | 2.45 | 4.4 | 2.96 | 7 | 6 | 3 |
| 836 | 32.9 | 25092 | 5641 | 1000 | 225 | 12546 | 2820 | 600 | 135 | 25092 | 5641 | 1000 | 225 | 5.8 | 3.88 | 4.0 | 2.70 | 4.9 | 3.26 | 7 | 6 | 3 |
| 912 | 35.9 | 27373 | 6153 | 1000 | 225 | 13687 | 3077 | 600 | 135 | 27373 | 6153 | 1000 | 225 | 6.3 | 4.23 | 4.4 | 2.94 | 5.3 | 3.56 | 7 | 7 | 4 |
| 988 | 38.9 | 29654 | 6666 | 1000 | 225 | 14827 | 3333 | 600 | 135 | 29654 | 6666 | 1000 | 225 | 6.8 | 4.58 | 4.7 | 3.19 | 5.7 | 3.85 | 7 | 7 | 4 |

Additional standard belt widths are available in steps of 76.0 mm (2.99 in) Additional non-standard belt widths are available in steps of 12.7 mm (0.50 in)

| | | | | | | | | | | | | | | | | | | | | | | |
|------|------|-------|-------|------|-----|-------|------|-----|-----|-------|-------|------|-----|------|------|-----|------|-----|------|----|----|---|
| 1597 | 62.9 | 47910 | 10770 | 1000 | 225 | 23955 | 5385 | 600 | 135 | 47910 | 10770 | 1000 | 225 | 11.0 | 7.41 | 7.7 | 5.15 | 9.3 | 6.22 | 11 | 11 | 6 |
|------|------|-------|-------|------|-----|-------|------|-----|-----|-------|-------|------|-----|------|------|-----|------|-----|------|----|----|---|

Additional standard belt widths are available in steps of 76.0 mm (2.99 in) Additional non-standard belt widths are available in steps of 12.7 mm (0.50 in)

| | | | | | | | | | | | | | | | | | | | | | | |
|------|------|-------|-------|------|-----|-------|------|-----|-----|-------|-------|------|-----|------|------|-----|------|------|------|----|----|---|
| 1977 | 77.8 | 59310 | 13333 | 1000 | 225 | 29655 | 6666 | 600 | 135 | 59310 | 13333 | 1000 | 225 | 13.6 | 9.17 | 9.5 | 6.38 | 11.5 | 7.71 | 15 | 14 | 7 |
|------|------|-------|-------|------|-----|-------|------|-----|-----|-------|-------|------|-----|------|------|-----|------|------|------|----|----|---|

General belt tolerance is +0/-0.4% at 23°C/73°F. For exact belt width contact Customer Service. Non standard belt width on request.

Flex SNB-L locked with wearpart or O-tabs both sides are 6.0 mm (0.24 in) wider than the dimensions in the table above.

*Max. Load per Drive Sprocket. Belt material: POM-D 1000 N (225 lbf). PP 850 N (191 lbf). PA6.6 1000 N (225 lbf).

**Max. Spacing between wear strips. Carry: 152.0 mm (6.00 in); Return: 304.0 mm (12.00 in).

uni Flex SNB W R2.3 / uni Flex SNB WO R2.3

| Belt width | | Permissible tensile force (Belt/pin material) | | | | | | | | | | | | Belt weight (Belt/pin material) | | | | | | *Min No. drive sprocket per shaft | Number of wear strips (Min. No.) | |
|------------|------|---|------|----------------|-----|----------------------------|------|----------------|-----|-------------------------------|------|----------------|-----|---------------------------------|------|----------------------------|-------|-------------------------------|-------|-----------------------------------|----------------------------------|----------------|
| | | POM-D/SS+ Reinforcement links | | | | PP/SS+ Reinforcement links | | | | PA6.6/SS+ Reinforcement links | | | | POM-D/SS+ Reinforcement links | | PP/SS+ Reinforcement links | | PA6.6/SS+ Reinforcement links | | | **Carry (pcs) | **Return (pcs) |
| | | Straight sections | | Curve sections | | Straight sections | | Curve sections | | Straight sections | | Curve sections | | kg/m lb/ft | | kg/m lb/ft | | kg/m lb/ft | | | | |
| mm | in | N | lbf | N | lbf | N | lbf | N | lbf | N | lbf | N | lbf | N | lbf | kg/m | lb/ft | kg/m | lb/ft | kg/m | lb/ft | |
| 235 | 9.3 | 7050 | 1585 | 3300 | 742 | 3525 | 792 | 3300 | 742 | 7050 | 1585 | 3300 | 742 | 2.8 | 1.91 | 2.4 | 1.58 | 2.6 | 1.74 | 2 | 2 | 2 |
| 311 | 12.2 | 9330 | 2097 | 3300 | 742 | 4665 | 1049 | 3300 | 742 | 9330 | 2097 | 3300 | 742 | 3.8 | 2.53 | 3.1 | 2.09 | 3.4 | 2.30 | 3 | 3 | 2 |
| 387 | 15.2 | 11610 | 2610 | 3300 | 742 | 5805 | 1305 | 3300 | 742 | 11610 | 2610 | 3300 | 742 | 4.7 | 3.15 | 3.9 | 2.60 | 4.3 | 2.86 | 3 | 3 | 2 |
| 463 | 18.2 | 13890 | 3122 | 3300 | 742 | 6945 | 1561 | 3300 | 742 | 13890 | 3122 | 3300 | 742 | 5.6 | 3.77 | 4.6 | 3.11 | 5.1 | 3.42 | 5 | 4 | 2 |
| 540 | 21.3 | 16200 | 3642 | 3300 | 742 | 8100 | 1821 | 3300 | 742 | 16200 | 3642 | 3300 | 742 | 6.5 | 4.39 | 5.4 | 3.63 | 5.9 | 3.99 | 5 | 4 | 2 |
| 616 | 24.3 | 18480 | 4154 | 3300 | 742 | 9240 | 2077 | 3300 | 742 | 18480 | 4154 | 3300 | 742 | 7.5 | 5.01 | 6.2 | 4.14 | 6.8 | 4.55 | 5 | 5 | 3 |
| 692 | 27.2 | 20760 | 4667 | 3300 | 742 | 10380 | 2333 | 3300 | 742 | 20760 | 4667 | 3300 | 742 | 8.4 | 5.63 | 6.9 | 4.65 | 7.6 | 5.12 | 5 | 5 | 3 |
| 768 | 30.2 | 23040 | 5179 | 3300 | 742 | 11520 | 2590 | 3300 | 742 | 23040 | 5179 | 3300 | 742 | 9.3 | 6.25 | 7.7 | 5.16 | 8.4 | 5.68 | 7 | 6 | 3 |
| 844 | 33.2 | 25320 | 5692 | 3300 | 742 | 12660 | 2846 | 3300 | 742 | 25320 | 5692 | 3300 | 742 | 10.2 | 6.86 | 8.4 | 5.67 | 9.3 | 6.24 | 7 | 6 | 3 |
| 920 | 36.2 | 27600 | 6204 | 3300 | 742 | 13800 | 3102 | 3300 | 742 | 27600 | 6204 | 3300 | 742 | 11.1 | 7.48 | 9.2 | 6.18 | 10.1 | 6.80 | 7 | 7 | 4 |
| 996 | 39.2 | 29880 | 6717 | 3300 | 742 | 14940 | 3359 | 3300 | 742 | 29880 | 6717 | 3300 | 742 | 12.1 | 8.10 | 10.0 | 6.69 | 11.0 | 7.36 | 7 | 7 | 4 |
| 1073 | 42.2 | 32190 | 7236 | 3300 | 742 | 16095 | 3618 | 3300 | 742 | 32190 | 7236 | 3300 | 742 | 13.0 | 8.73 | 10.7 | 7.21 | 11.8 | 7.93 | 9 | 8 | 4 |
| 1149 | 45.2 | 34470 | 7749 | 3300 | 742 | 17235 | 3874 | 3300 | 742 | 34470 | 7749 | 3300 | 742 | 13.9 | 9.34 | 11.5 | 7.72 | 12.6 | 8.49 | 9 | 8 | 4 |
| 1149 | 45.2 | 34470 | 7749 | 3300 | 742 | 17235 | 3874 | 3300 | 742 | 34470 | 7749 | 3300 | 742 | 13.9 | 9.34 | 11.5 | 7.72 | 12.6 | 8.49 | 9 | 8 | 4 |

Additional standard belt widths are available in steps of 76.0 mm (2.99 in) Additional non-standard belt widths are available in steps of 12.7 mm (0.50 in)

| | | | | | | | | | | | | | | | | | | | | | | |
|------|------|-------|-------|------|-----|-------|------|------|-----|-------|-------|------|-----|------|-------|------|-------|------|-------|----|----|---|
| 1606 | 63.2 | 48180 | 10831 | 3300 | 742 | 24090 | 5415 | 3300 | 742 | 48180 | 10831 | 3300 | 742 | 19.4 | 13.06 | 16.1 | 10.79 | 17.7 | 11.87 | 11 | 11 | 6 |
|------|------|-------|-------|------|-----|-------|------|------|-----|-------|-------|------|-----|------|-------|------|-------|------|-------|----|----|---|

Additional standard belt widths are available in steps of 76.0 mm (2.99 in) Additional non-standard belt widths are available in steps of 12.7 mm (0.50 in)

| | | | | | | | | | | | | | | | | | | | | | | |
|------|------|-------|-------|------|-----|-------|------|------|-----|-------|-------|------|-----|------|-------|------|-------|------|-------|----|----|---|
| 1986 | 78.2 | 59580 | 13394 | 3300 | 742 | 29790 | 6697 | 3300 | 742 | 59580 | 13394 | 3300 | 742 | 24.0 | 16.15 | 19.9 | 13.35 | 21.8 | 14.68 | 15 | 14 | 7 |
|------|------|-------|-------|------|-----|-------|------|------|-----|-------|-------|------|-----|------|-------|------|-------|------|-------|----|----|---|

General belt tolerance is +0/-0.4% at 23°C/73°F. For exact belt width contact Customer Service. Non standard belt width on request.

Outer modules are always in PA6.6 on belts wider than 234.0 mm (9.21 in).

Belts up to 234.0 mm (9.21 in) in width is only available in PA6.6.

*Max. Load per Drive Sprocket. Belt material: POM-D 1000 N (225 lbf). PP 850 N (191 lbf). PA6.6 1000 N (225 lbf).

**Max. Spacing between wear strips. Carry: 152.0 mm (6.00 in); Return: 304.0 mm (12.00 in).

uni Flex SNB WT R2.3 – PBT pins

| Belt width | | Permissible tensile force (Belt/pin material) | | | | | | | | | | | | Belt weight (Belt/pin material) | | | | | | *Min No. drive sprocket per shaft | Number of wear strips (Min. No.) | |
|------------|------|---|------|----------------|-----|-------------------|------|----------------|-----|-------------------|------|----------------|-----|---------------------------------|-------|------------|-------|------------|-------|-----------------------------------|----------------------------------|----------------|
| | | POM-D/PBT | | | | PP/PBT | | | | PA6.6/PBT | | | | POM-D/PBT | | PP/PBT | | PA6.6/PBT | | | **Carry (pcs) | **Return (pcs) |
| | | Straight sections | | Curve sections | | Straight sections | | Curve sections | | Straight sections | | Curve sections | | kg/m lb/ft | | kg/m lb/ft | | kg/m lb/ft | | | | |
| mm | in | N | lbf | N | lbf | N | lbf | N | lbf | N | lbf | N | lbf | kg/m | lb/ft | kg/m | lb/ft | kg/m | lb/ft | | | |
| 235 | 9.3 | 7050 | 1585 | 1000 | 225 | 3525 | 792 | 1000 | 225 | 7050 | 1585 | 1000 | 225 | 1.6 | 1.09 | 1.1 | 0.76 | 1.4 | 0.92 | 2 | 2 | 2 |
| 311 | 12.2 | 9330 | 2097 | 1000 | 225 | 4665 | 1049 | 1000 | 225 | 9330 | 2097 | 1000 | 225 | 2.1 | 1.44 | 1.5 | 1.00 | 1.8 | 1.21 | 3 | 3 | 2 |
| 387 | 15.2 | 11610 | 2610 | 1000 | 225 | 5805 | 1305 | 1000 | 225 | 11610 | 2610 | 1000 | 225 | 2.7 | 1.79 | 1.9 | 1.25 | 2.2 | 1.51 | 3 | 3 | 2 |
| 463 | 18.2 | 13890 | 3122 | 1000 | 225 | 6945 | 1561 | 1000 | 225 | 13890 | 3122 | 1000 | 225 | 3.2 | 2.15 | 2.2 | 1.49 | 2.7 | 1.80 | 5 | 4 | 2 |
| 540 | 21.3 | 16200 | 3642 | 1000 | 225 | 8100 | 1821 | 1000 | 225 | 16200 | 3642 | 1000 | 225 | 3.7 | 2.50 | 2.6 | 1.74 | 3.1 | 2.10 | 5 | 4 | 2 |
| 616 | 24.3 | 18480 | 4154 | 1000 | 225 | 9240 | 2077 | 1000 | 225 | 18480 | 4154 | 1000 | 225 | 4.3 | 2.86 | 3.0 | 1.99 | 3.6 | 2.40 | 5 | 5 | 3 |
| 692 | 27.2 | 20760 | 4667 | 1000 | 225 | 10380 | 2333 | 1000 | 225 | 20760 | 4667 | 1000 | 225 | 4.8 | 3.21 | 3.3 | 2.23 | 4.0 | 2.70 | 5 | 5 | 3 |
| 768 | 30.2 | 23040 | 5179 | 1000 | 225 | 11520 | 2590 | 1000 | 225 | 23040 | 5179 | 1000 | 225 | 5.3 | 3.56 | 3.7 | 2.48 | 4.5 | 2.99 | 7 | 6 | 3 |
| 844 | 33.2 | 25320 | 5692 | 1000 | 225 | 12660 | 2846 | 1000 | 225 | 25320 | 5692 | 1000 | 225 | 5.8 | 3.91 | 4.1 | 2.72 | 4.9 | 3.29 | 7 | 6 | 3 |
| 920 | 36.2 | 27600 | 6204 | 1000 | 225 | 13800 | 3102 | 1000 | 225 | 27600 | 6204 | 1000 | 225 | 6.3 | 4.27 | 4.4 | 2.97 | 5.3 | 3.59 | 7 | 7 | 4 |
| 996 | 39.2 | 29880 | 6717 | 1000 | 225 | 14940 | 3359 | 1000 | 225 | 29880 | 6717 | 1000 | 225 | 6.9 | 4.62 | 4.8 | 3.21 | 5.8 | 3.88 | 7 | 7 | 4 |
| 1073 | 42.2 | 32190 | 7236 | 1000 | 225 | 16095 | 3618 | 1000 | 225 | 32190 | 7236 | 1000 | 225 | 7.4 | 4.98 | 5.2 | 3.46 | 6.2 | 4.18 | 9 | 8 | 4 |
| 1149 | 45.2 | 34470 | 7749 | 1000 | 225 | 17235 | 3874 | 1000 | 225 | 34470 | 7749 | 1000 | 225 | 7.9 | 5.33 | 5.5 | 3.71 | 6.7 | 4.48 | 9 | 8 | 4 |
| 1225 | 48.2 | 36750 | 8261 | 1000 | 225 | 18375 | 4131 | 1000 | 225 | 36750 | 8261 | 1000 | 225 | 8.5 | 5.68 | 5.9 | 3.95 | 7.1 | 4.77 | 9 | 9 | 5 |

Additional standard belt widths are available in steps of 76.0 mm (2.99 in) Additional non-standard belt widths are available in steps of 12.7 mm (0.50 in).

| | | | | | | | | | | | | | | | | | | | | | | |
|------|------|-------|-------|------|-----|-------|------|------|-----|-------|-------|------|-----|------|------|-----|------|-----|------|----|----|---|
| 1606 | 63.2 | 48180 | 10831 | 1000 | 225 | 24090 | 5415 | 1000 | 225 | 48180 | 10831 | 1000 | 225 | 11.1 | 7.45 | 7.7 | 5.18 | 9.3 | 6.26 | 11 | 11 | 6 |
|------|------|-------|-------|------|-----|-------|------|------|-----|-------|-------|------|-----|------|------|-----|------|-----|------|----|----|---|

Additional standard belt widths are available in steps of 76.0 mm (2.99 in) Additional non-standard belt widths are available in steps of 12.7 mm (0.50 in).

| | | | | | | | | | | | | | | | | | | | | | | |
|------|------|-------|-------|------|-----|-------|------|------|-----|-------|-------|------|-----|------|------|-----|------|------|------|----|----|---|
| 1986 | 78.2 | 59580 | 13394 | 1000 | 225 | 29790 | 6697 | 1000 | 225 | 59580 | 13394 | 1000 | 225 | 13.7 | 9.21 | 9.5 | 6.41 | 11.5 | 7.74 | 15 | 14 | 7 |
|------|------|-------|-------|------|-----|-------|------|------|-----|-------|-------|------|-----|------|------|-----|------|------|------|----|----|---|

General belt tolerance is +0/-0.4% at 23°C/73°F. For exact belt width contact Customer Service. Non standard belt width on request.

Outer modules are always in PA6.6 on belts wider than 234.0 mm (9.21 in).

Belts up to 234.0 mm (9.21 in) in width is only available in PA6.6.

*Max. Load per Drive Sprocket. Belt material: POM-D 1000 N (225 lbf). PP 850 N (191 lbf). PA6.6 1000 N (225 lbf).

**Max. Spacing between wear strips. Carry: 152.0 mm (6.00 in); Return: 304.0 mm (12.00 in).

uni Flex SNB WT R2.3 – SS pins

| Belt width | | Permissible tensile force (Belt/pin material) | | | | | | | | | | | | Belt weight (Belt/pin material) | | | | | | *Min No. drive sprocket per shaft | Number of wear strips (Min. No.) | |
|------------|------|--|------|-------------------|-----|-------------------------------|------|-------------------|-----|----------------------------------|------|-------------------|-----|---------------------------------------|-------|------------------------------------|-------|---------------------------------------|-------|--|-------------------------------------|-------------------|
| | | POM-D/SS +Reinforcement links | | | | PP/SS +Reinforcement links | | | | PA6.6/SS +Reinforcement links | | | | POM-D/SS+ Reinforce- ment links | | PP/SS+ Reinforce- ment links | | PA6.6/SS+ Reinforce- ment links | | | **Carry (pcs) | **Return (pcs) |
| | | Straight sections | | Curve sections | | Straight sections | | Curve sections | | Straight sections | | Curve sections | | kg/m | lb/ft | kg/m | lb/ft | kg/m | lb/ft | | | |
| mm | in | N | lbf | N | lbf | N | lbf | N | lbf | N | lbf | N | lbf | kg/m | lb/ft | kg/m | lb/ft | kg/m | lb/ft | | | |
| 235 | 9.3 | 7050 | 1585 | 3300 | 742 | 3525 | 792 | 3300 | 742 | 7050 | 1585 | 3300 | 742 | 2.8 | 1.91 | 2.4 | 1.58 | 2.6 | 1.74 | 2 | 2 | 2 |
| 311 | 12.2 | 9330 | 2097 | 3300 | 742 | 4665 | 1049 | 3300 | 742 | 9330 | 2097 | 3300 | 742 | 3.8 | 2.53 | 3.1 | 2.09 | 3.4 | 2.30 | 3 | 3 | 2 |
| 387 | 15.2 | 11610 | 2610 | 3300 | 742 | 5805 | 1305 | 3300 | 742 | 11610 | 2610 | 3300 | 742 | 4.7 | 3.15 | 3.9 | 2.60 | 4.3 | 2.86 | 3 | 3 | 2 |
| 463 | 18.2 | 13890 | 3122 | 3300 | 742 | 6945 | 1561 | 3300 | 742 | 13890 | 3122 | 3300 | 742 | 5.6 | 3.77 | 4.6 | 3.11 | 5.1 | 3.42 | 5 | 4 | 2 |
| 540 | 21.3 | 16200 | 3642 | 3300 | 742 | 8100 | 1821 | 3300 | 742 | 16200 | 3642 | 3300 | 742 | 6.5 | 4.39 | 5.4 | 3.63 | 5.9 | 3.99 | 5 | 4 | 2 |
| 616 | 24.3 | 18480 | 4154 | 3300 | 742 | 9240 | 2077 | 3300 | 742 | 18480 | 4154 | 3300 | 742 | 7.5 | 5.01 | 6.2 | 4.14 | 6.8 | 4.55 | 5 | 5 | 3 |
| 692 | 27.2 | 20760 | 4667 | 3300 | 742 | 10380 | 2333 | 3300 | 742 | 20760 | 4667 | 3300 | 742 | 8.4 | 5.63 | 6.9 | 4.65 | 7.6 | 5.12 | 5 | 5 | 3 |
| 768 | 30.2 | 23040 | 5179 | 3300 | 742 | 11520 | 2590 | 3300 | 742 | 23040 | 5179 | 3300 | 742 | 9.3 | 6.25 | 7.7 | 5.16 | 8.4 | 5.68 | 7 | 6 | 3 |
| 844 | 33.2 | 25320 | 5692 | 3300 | 742 | 12660 | 2846 | 3300 | 742 | 25320 | 5692 | 3300 | 742 | 10.2 | 6.86 | 8.4 | 5.67 | 9.3 | 6.24 | 7 | 6 | 3 |
| 920 | 36.2 | 27600 | 6204 | 3300 | 742 | 13800 | 3102 | 3300 | 742 | 27600 | 6204 | 3300 | 742 | 11.1 | 7.48 | 9.2 | 6.18 | 10.1 | 6.80 | 7 | 7 | 4 |
| 996 | 39.2 | 29880 | 6717 | 3300 | 742 | 14940 | 3359 | 3300 | 742 | 29880 | 6717 | 3300 | 742 | 12.1 | 8.10 | 10.0 | 6.69 | 11.0 | 7.36 | 7 | 7 | 4 |
| 1073 | 42.2 | 32190 | 7236 | 3300 | 742 | 16095 | 3618 | 3300 | 742 | 32190 | 7236 | 3300 | 742 | 13.0 | 8.73 | 10.7 | 7.21 | 11.8 | 7.93 | 9 | 8 | 4 |
| 1149 | 45.2 | 34470 | 7749 | 3300 | 742 | 17235 | 3874 | 3300 | 742 | 34470 | 7749 | 3300 | 742 | 13.9 | 9.34 | 11.5 | 7.72 | 12.6 | 8.49 | 9 | 8 | 4 |
| 1225 | 48.2 | 36750 | 8261 | 3300 | 742 | 18375 | 4131 | 3300 | 742 | 36750 | 8261 | 3300 | 742 | 14.8 | 9.96 | 12.3 | 8.23 | 13.5 | 9.06 | 9 | 9 | 5 |

Additional standard belt widths are available in steps of 76.0 mm (2.99 in) Additional non-standard belt widths are available in steps of 12.7 mm (0.50 in).

| | | | | | | | | | | | | | | | | | | | | | | |
|------|------|-------|-------|------|-----|-------|------|------|-----|-------|-------|------|-----|------|-------|------|-------|------|-------|----|----|---|
| 1606 | 63.2 | 48180 | 10831 | 3300 | 742 | 24090 | 5415 | 3300 | 742 | 48180 | 10831 | 3300 | 742 | 19.4 | 13.06 | 16.1 | 10.79 | 17.7 | 11.87 | 11 | 11 | 6 |
|------|------|-------|-------|------|-----|-------|------|------|-----|-------|-------|------|-----|------|-------|------|-------|------|-------|----|----|---|

Additional standard belt widths are available in steps of 76.0 mm (2.99 in) Additional non-standard belt widths are available in steps of 12.7 mm (0.50 in).

| | | | | | | | | | | | | | | | | | | | | | | |
|------|------|-------|-------|------|-----|-------|------|------|-----|-------|-------|------|-----|------|-------|------|-------|------|-------|----|----|---|
| 1986 | 78.2 | 59580 | 13394 | 3300 | 742 | 29790 | 6697 | 3300 | 742 | 59580 | 13394 | 3300 | 742 | 24.0 | 16.15 | 19.9 | 13.35 | 21.8 | 14.68 | 15 | 14 | 7 |
|------|------|-------|-------|------|-----|-------|------|------|-----|-------|-------|------|-----|------|-------|------|-------|------|-------|----|----|---|

General belt tolerance is +0/-0.4% at 23°C/73°F. For exact belt width contact Customer Service. Non standard belt width on request.

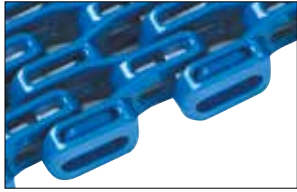
Outer modules are always in PA6.6 on belts wider than 234.0 mm (9.21 in).

Belts up to 234.0 mm (9.21 in) in width is only available in PA6.6.

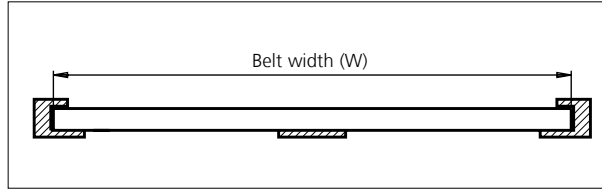
*Max. Load per Drive Sprocket. Belt material: POM-D 1000 N (225 lbf). PP 850 N (191 lbf). PA6.6 1000 N (225 lbf).

**Max. Spacing between wear strips. Carry: 152.0 mm (6.00 in); Return: 304.0 mm (12.00 in).

Belt Tracking and Control Systems



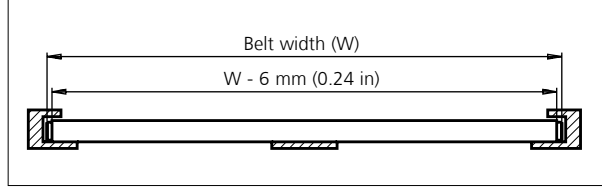
uni Flex SNB L R2.3
Standard



Basic belt types can be combined with the belt tracking and control systems below to enhance performance. Basic belt types can be combined with the belt tracking and control systems below to enhance performance.



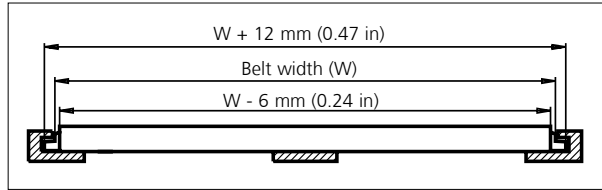
Wearpart



Wearpart system made of heat and wear resistant nylon to reduce the friction between belt edge and wearstrip. Only this part needs to be replaced when it has been worn out. not the entire belt.



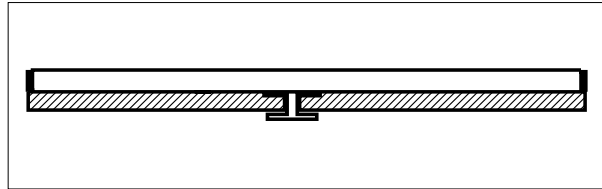
O-Tab



Outer edge tab system made of heat and wear resistant nylon to reduce the friction between belt edge and wearstrip. Using a slotted wear-strip, the O-Tab will track the belt and allow the conveyed products to be wider than the belt.
Height of O-Tab: 6.4 mm (0.25 in)
Height of slot: 8.0 mm (0.31 in)



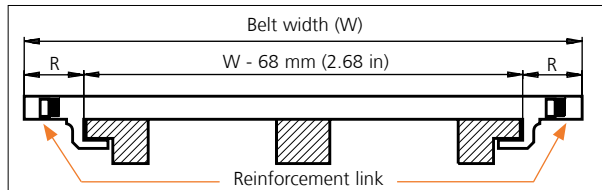
I-Tab



Intermediate tabs (I-Tab) are placed on the bottom side of the belt to hold it down on incline conveyors. The intermediate tabs will fit anywhere across the belt bottom and at pitch multiples of 12.7 mm (0.50 in).



S-Tab



Side tab (S-Tab) for holding the belt down. Normally used for wide belts. With S-Tabs, Ammerral Beltech modular A/S recommend that the radial forces in the curve are transferred by the inside edge of the belt – similar to uni Flex SNB L and uni Flex SNB W.
R = 34.0 mm (1.34 in).

| Type | Belt tracking and control combination | | | |
|----------------------|---------------------------------------|-------|-------|-------|
| | Wearpart | O-Tab | S-Tab | I-Tab |
| uni Flex SNB L R2.3 | + | + | - | + |
| uni Flex SNB CR R1.6 | + | + | - | - |
| uni Flex SNB C R2.3 | ✓ | - | - | + |
| uni Flex SNB W R2.3 | - | - | ✓ | + |
| uni Flex SNB WO R2.3 | - | ✓ | - | + |

When using S-Tabs, please verify sufficient clearance to the shaft. Max. shaft diameter = Sprocket pitch diameter - 50.8 mm (2.00 in).

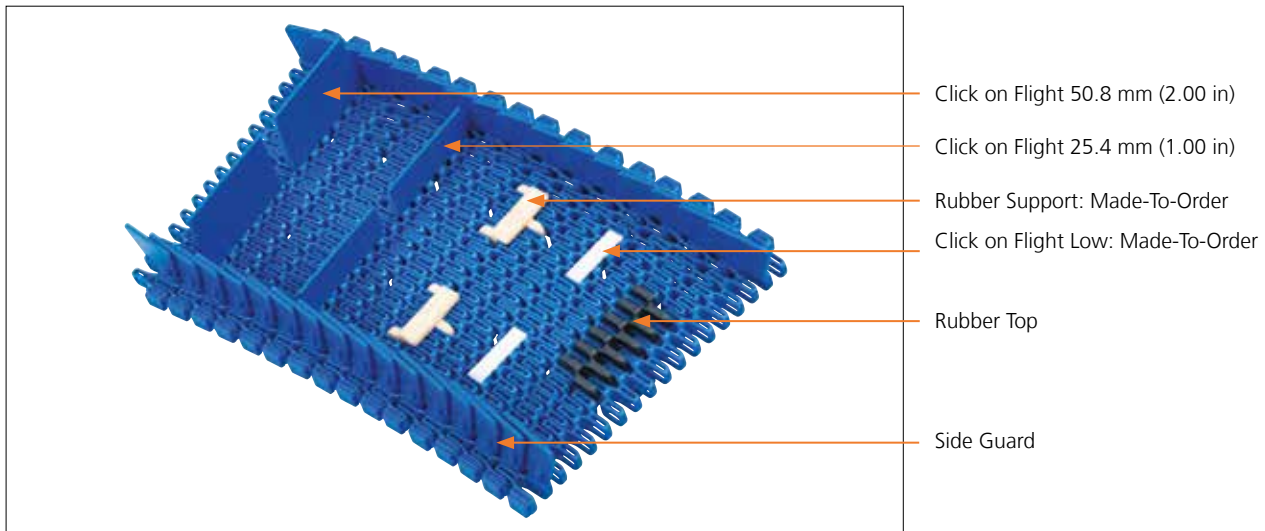
When using square shafts, please verify that the diagonal does not exceed max. diameter.

Example: Sprocket z = 10: Max. shaft diameter 82.2 - 50.8 = ø31 mm (3.24 - 2.00 = ø1.2 in).

✓ *Standard* + *Optional*

- *Unavailable*

Accessories



Accessories

Side Guard / Standard

| Type | Belt material & color | Height | |
|------------|------------------------|--------|------|
| | | mm | in |
| Side Guard | PP-I B W | 30.0 | 1.18 |

Accessories

Flight / Standard

| Type | Belt material & color | Link size | Height | | Width | |
|----------------------|-------------------------|-----------|--------|------|-------|------|
| | | | mm | in | mm | in |
| Click on Flight Flat | PA6.6 B W | K300 | 25.4 | 1.00 | 75.9 | 2.99 |
| | PP B W | | 50.8 | 2.00 | 75.9 | 2.99 |

Support / MTO

| Type | Support material & color | H | | Width | | Length | |
|---------------------|--------------------------|-----|------|-------|------|--------|------|
| | | mm | in | mm | in | mm | in |
| Rubber Support | 01 N | 4.0 | 0.16 | 43.0 | 1.69 | 14.0 | 0.55 |
| Click on Flight Low | POM-D N | 4.0 | 0.16 | 42.0 | 1.65 | 10.5 | 0.41 |

Accessories

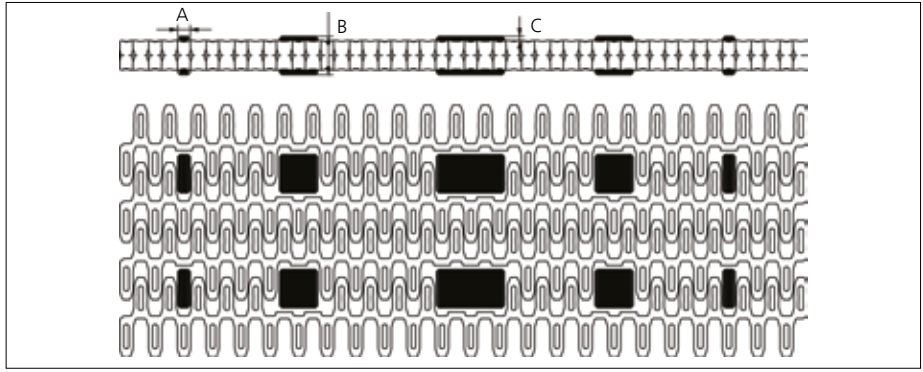
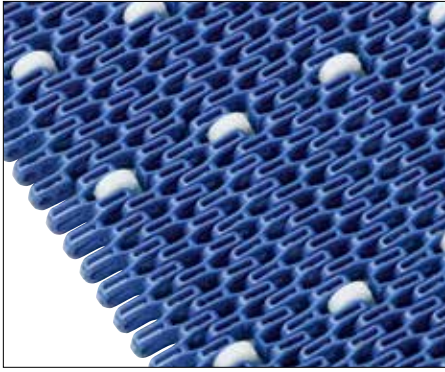
Minimum Indents (I)

| Type | Rubber Top | | | | Side Guard | | | | Click on Flights without Side Guard | | | | Click on Flights with Side Guard | | | |
|------------------------|------------|------|-------|------|------------|------|-------|------|-------------------------------------|------|-------|------|----------------------------------|------|-------|------|
| | Left | | Right | | Left | | Right | | Left | | Right | | Left | | Right | |
| | mm | in | mm | in | mm | in | mm | in | mm | in | mm | in | mm | in | mm | in |
| uni Flex SNB CR R1.6 | 26.5 | 1.04 | 26.5 | 1.04 | - | - | - | - | - | - | - | - | - | - | - | - |
| uni Flex SNB L R2.3 | - | - | - | - | 23.0 | 0.91 | 17.0 | 0.67 | 10.0 | 0.39 | 16.0 | 0.63 | 26.0 | 1.02 | 32.0 | 1.26 |
| uni Flex SNB C R2.3 | 6.5 | 0.26 | 6.5 | 0.26 | - | - | - | - | - | - | - | - | - | - | - | - |
| uni Flex SNB W R2.3 | 75.9 | 2.99 | 75.9 | 2.99 | 38.0 | 1.50 | 32.0 | 1.26 | 38.0 | 1.50 | 32.0 | 1.26 | 54.0 | 2.13 | 48.0 | 1.89 |
| uni Flex SNB WO R2.3 | 75.9 | 2.99 | 75.9 | 2.99 | 38.0 | 1.50 | 32.0 | 1.26 | 38.0 | 1.50 | 32.0 | 1.26 | 54.0 | 2.13 | 48.0 | 1.89 |
| uni Flex SNB WT R2.3* | 75.9 | 2.99 | 75.9 | 2.99 | 63.0 | 2.48 | 58.0 | 2.28 | 38.0 | 1.50 | 32.0 | 1.26 | 79.0 | 3.11 | 74.0 | 2.91 |
| uni Flex SNB WT R2.3** | 75.9 | 2.99 | 75.9 | 2.99 | 63.0 | 2.48 | 58.0 | 2.28 | 51.0 | 2.01 | 45.0 | 1.77 | 79.0 | 3.11 | 74.0 | 2.91 |

* Even distance between Click on Flight rows

** Odd distance between Click on Flight rows

Made-To-Order Selection



uni Flex SNB with Rollers
 ø17 x 5.5 mm (ø0.67 x 0.22 in)

Made-To-Order Materials: POM-D, PP, PA6.6 and Roller Material POM-D.
 Non standard Roller material and color: See uni Material and Color view.

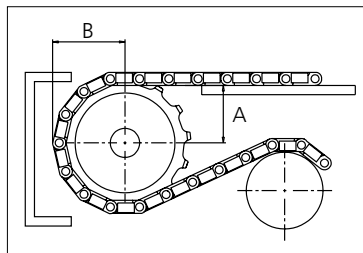
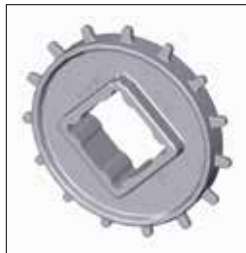
| Type | Roller material & color | A | | B | | C | |
|---------|---|------|------|------|------|-----|------|
| | | mm | in | mm | in | mm | in |
| Plastic | POM-D W | 5.5 | 0.22 | 17.0 | 0.67 | 2.0 | 0.08 |
| | | 17.0 | 0.67 | | | | |
| | | 30.0 | 1.18 | | | | |

Sprocket

| No. of teeth | Bore size | | | | | | | Overall diameter | | Pitch diameter | | Hub diameter | | Dimension A | | Dimension B | | Single row/Two way | Molded | PA6 LG |
|--------------|------------|----|------|------|------|------|------|------------------|------|----------------|------|--------------|------|-------------|------|-------------|------|--------------------|--------|--------|
| | Pilot Bore | mm | 25.0 | 25.4 | 30.0 | 31.8 | 38.1 | | | | | | | | | | | | | |
| Z09 | ✓ | | ■ | ● | ● | | | 73.8 | 2.91 | 74.3 | 2.93 | 56.8 | 2.24 | 28.4 | 1.12 | 43.5 | 1.71 | ✓ | ✓ | |
| Z10 | ✓ | | ■ | ● | ● | | ● | 82.2 | 3.24 | 82.2 | 3.24 | 65.2 | 2.57 | 32.6 | 1.28 | 47.5 | 1.87 | ✓ | ✓ | |
| Z12 | ✓ | | | ● | ● | ● | ■ | 98.8 | 3.89 | 98.1 | 3.86 | 70.0 | 2.76 | 40.9 | 1.61 | 55.5 | 2.19 | ✓ | ✓ | |
| Z15 | ✓ | | | ● | ● | ● | ■ | 123.5 | 4.86 | 122.2 | 4.81 | 70.0 | 2.76 | 53.2 | 2.09 | 67.5 | 2.66 | ✓ | ✓ | |
| Z18 | ✓ | | | | ● | ● | ■ | 148.1 | 5.83 | 146.3 | 5.76 | 70.0 | 2.76 | 65.5 | 2.58 | 79.6 | 3.13 | ✓ | ✓ | |
| Z19 | ✓ | | | | ● | ● | ■ | 156.2 | 6.15 | 154.3 | 6.07 | 70.0 | 2.76 | 69.6 | 2.74 | 83.6 | 3.29 | ✓ | ✓ | |

■ Molded sprocket

● Molded sprocket



Non standard material and color: See uni Material and Color Overview.

Other sprocket sizes are available upon request.

Two-part sprocket are available upon request.

Other bore sizes are available upon request.

uni Retainer Rings: See uni Retainer Ring data sheet.

Width of tooth = 4.0 mm (0.16 in).

Width of sprocket = 25.0 mm (0.98 in).

Max. load per sprocket shown does not take bore size into account.

Please also ensure that sufficient size shaft is chosen for corresponding load.

For correct sprocket position: See uni Assembly Instructions for uni Flex ASB.

For more detailed sprocket information, contact Customer Service.



Conveyor Belts



Seamless Belts



Modular Belts



Timing Belts



Transmission Belts



Fabrication & service

Expert advice, quality solutions and local service for all your belting needs
www.ammeraalbeltech.com

Ammeraal Beltech Modular A/S
 Hjulmagervej 21
 DK-7100 Vejle

T +45 7572 3100
 F +45 7572 3348
 admin@unichains.com
 www.unichains.com

This information is subject to alteration due to continuous development. Ammeraal Beltech will not be held liable for the incorrect use of the above stated information. This information replaces previous information. All activities performed and services rendered by Ammeraal Beltech are subject to general terms and conditions of sale and delivery, as applied by its operating companies.