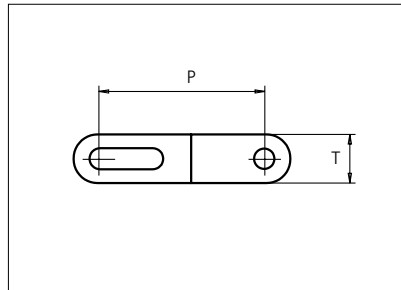
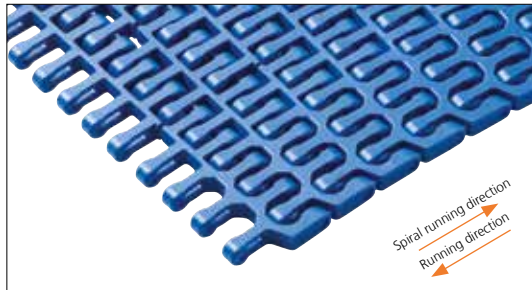




# Plastic Modular Belt

Series **uni Flex L-ASB** Type **47% Open (Radius 2.2)**



Sideflexing belt  
 Nominal pitch: 50.8 mm (2.00 in)  
 Surface type: Flat  
 Surface opening: 47%  
 Backflex radius: 100.0 mm (3.94 in)  
 Pin diameter: 6.0 mm (0.24 in)  
 Min. inside radius: 2.2 x belt width

Belt material & color	POM-D <b>B</b> <b>W</b>	PP <b>B</b> <b>W</b>	mm	in		
	Pin and lock material & color	PA6.6 <b>B</b>		P (Nominal)	50.8	2.00
				T	15.0	0.59

Non standard material and color: See uni Material and Color Overview.  
 Alternative pin and lock systems and materials: Contact Customer Service.

Belt width		Permissible tensile force (Belt/pin material)								Belt weight (Belt/pin material)				*Min. No. drive sprocket per shaft	Number of wear strips (Min. No.)	
		POM-D/PA6.6				PP/PA6.6				POM-D/PA6.6		PP/PA6.6			**Carry (pcs)	**Return (pcs)
		Straight sections		Curve sections		Straight sections		Curve sections		kg/m	lb/ft	kg/m	lb/ft			
mm	in	N	lbf	N	lbf	N	lbf	N	lbf	kg/m	lb/ft	kg/m	lb/ft			
250	9.8	10000	2248	2440	549	5000	1124	1440	324	2.5	1.65	1.5	1.01	2	2	2
326	12.8	13040	2931	2440	549	6520	1466	1440	324	3.2	2.15	2.0	1.31	3	3	2
403	15.9	16120	3624	3110	699	8060	1812	1960	441	3.9	2.65	2.4	1.63	3	3	2
479	18.9	19160	4307	3110	699	9580	2154	1960	441	4.7	3.15	2.9	1.93	5	4	2
555	21.9	22200	4991	3110	699	11100	2495	1960	441	5.4	3.66	3.3	2.24	5	4	2
631	24.8	25240	5674	3110	699	12620	2837	1960	441	6.2	4.16	3.8	2.54	5	5	3
708	27.9	28320	6366	3110	699	14160	3183	1960	441	6.9	4.66	4.2	2.85	5	5	3
784	30.9	31360	7050	3110	699	15680	3525	1960	441	7.7	5.16	4.7	3.16	7	6	3
860	33.9	34400	7733	3110	699	17200	3867	1960	441	8.4	5.66	5.2	3.47	7	6	3
936	36.9	37440	8417	3110	699	18720	4208	1960	441	9.2	6.16	5.6	3.77	7	7	4
1013	39.9	40520	9109	3110	699	20260	4554	1960	441	9.9	6.67	6.1	4.08	7	7	4
1089	42.9	43560	9792	3110	699	21780	4896	1960	441	10.7	7.17	6.5	4.39	9	8	4

Additional standard belt widths are available in steps of 76.2 mm (3.00 in). Additional non-standard belt widths are available in steps of 25.4 mm (1.00 in).

1699	66.9	67960	15277	3110	699	33980	7639	1960	441	16.7	11.19	10.2	6.85	13	12	6
------	------	-------	-------	------	-----	-------	------	------	-----	------	-------	------	------	----	----	---

Additional standard belt widths are available in steps of 76.2 mm (3.00 in). Additional non-standard belt widths are available in steps of 25.4 mm (1.00 in).

1927	75.9	77080	17328	3110	699	38540	8664	1960	441	18.9	12.69	11.6	7.77	13	13	7
------	------	-------	-------	------	-----	-------	------	------	-----	------	-------	------	------	----	----	---

General belt tolerance is +0/-0.4% at 23°C/73°F. For exact belt width contact Customer Service. Non standard belt width on request.

\*Max. Load per Drive Sprocket. Belt material: POM-D 2500 N (562 lbf), PP 1200 N (270 lbf).

\*\*Max. Spacing between wear strips, Carry: 152.0 mm (6.00 in); Return: 304.0 mm (12.00 in).

□ = Single Link



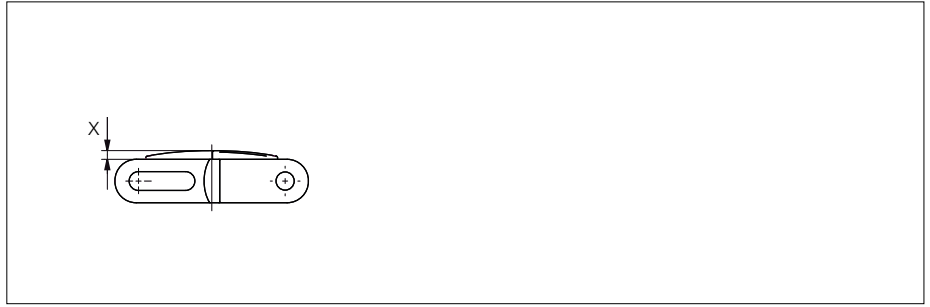
STANDARD

SIDE FLEXING

PITCH 50.8 MM/2.00 IN

## Accessories

### Rubber Top

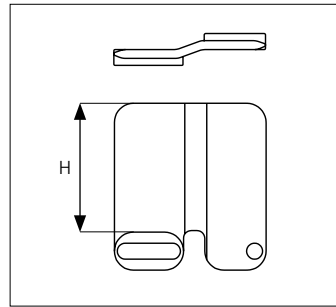
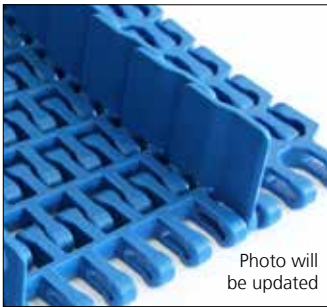


Type	Belt material & color	Rubber material, hardness & color	X	
			mm	in
Curved	PP <b>B</b>	TPE-S Shore A60 <b>K</b>	3.0	0.12

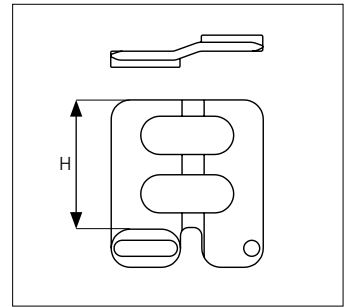
uni Flex L-ASB Rubber Top Radius 2.2: Indent min. 71.0 mm (2.80 in) and Increment 25.4 mm (1.00).

## Accessories

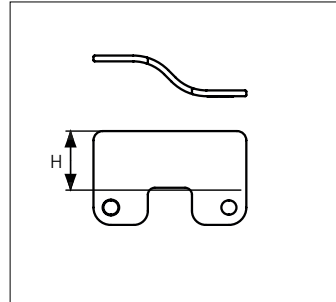
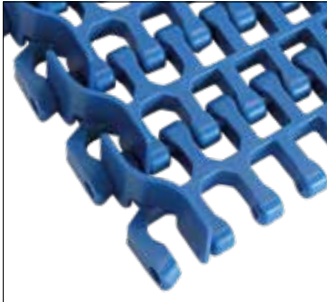
### Side Guard Closed



### Side Guard Open



### Side Guard Outside Closed



Type	Material & color	H	
		mm	in
Side Guard Closed	POM-D <b>B</b>	10.0	0.39
		25.4	1.00
		50.0	1.97
Side Guard Open		50.0	1.97
Side Guard Outside Closed		25.4	1.00

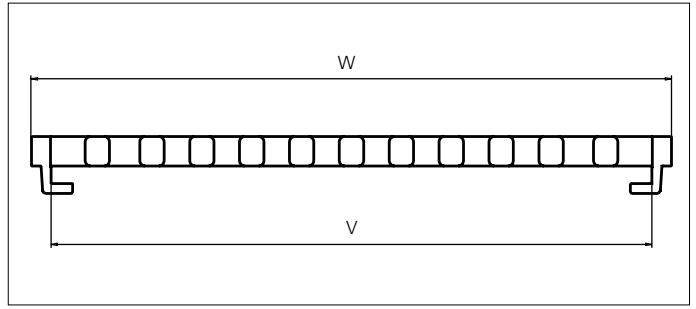
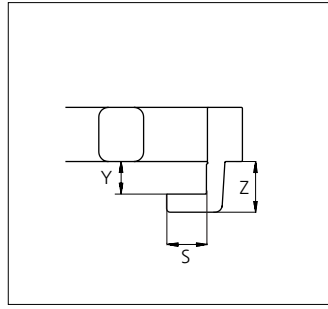
Min. indent for Side Guard Closed and Side Guard Open: 55.0 mm (2.17 in) and Increment 25.4 mm (1.00 in).

Min/max indent for Side Guard Outside Closed: 10.0 mm (0.39 in).

Non Standard material and color: See uni Material and Color Overview.

## Accessories

### Bottom Tab

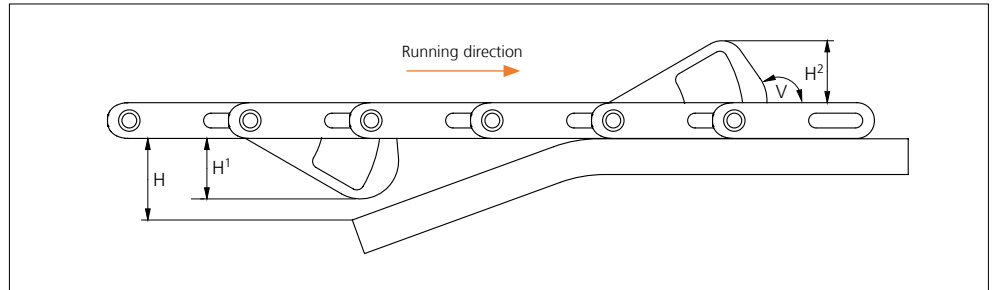


Type	Bottom Tab material and colors	S		V		W		Y		Z	
		mm	in	mm	in	mm	in	mm	in	mm	in
Hold Down Edge	POM-D <b>B</b> <b>W</b>	11.0	0.43	306.5	12.07	325.9	12.83	9.0	0.35	14.0	0.55
	PP <b>B</b> <b>W</b>										

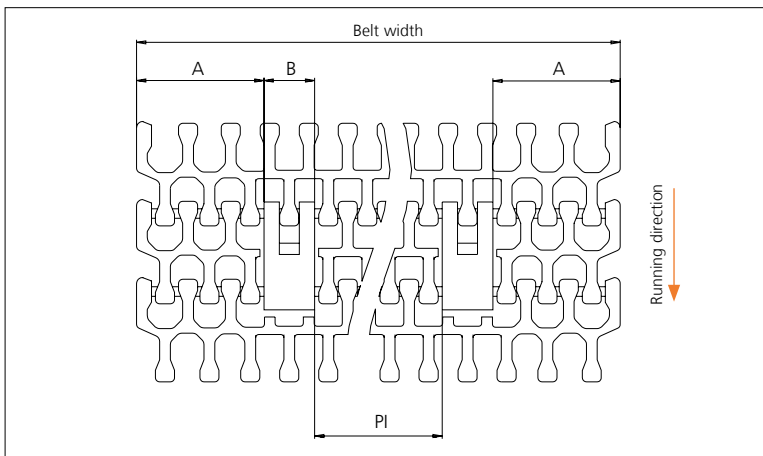
Non Standard material and color: See uni Material and Color Overview.

## Accessories

### AmFlight



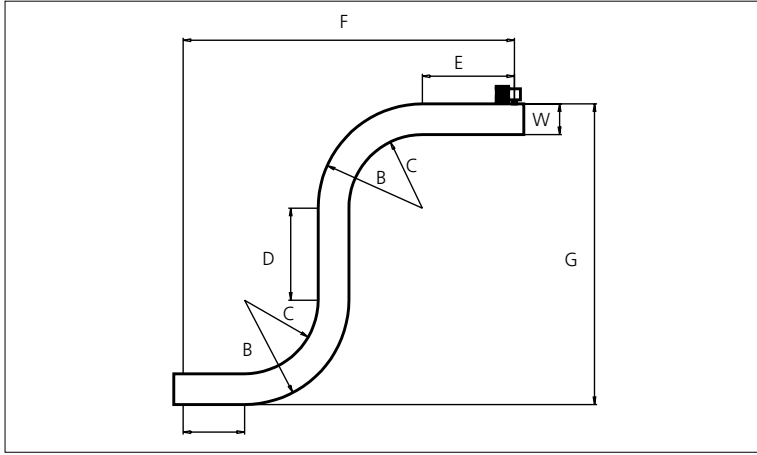
Type	Material & color	H	H <sup>1</sup>		H <sup>2</sup>		V
			mm	in	mm	in	
Push	PE <b>W</b>	H > H <sup>1</sup>	25.4	1.00	26.0	1.02	125°



	mm	in
<b>A min</b>	83.0	3.27
<b>B</b>	33.0	1.30
<b>PI min</b>	68.5	2.70

Increment: 25.4 mm (1.00 in).

## Design Guidelines



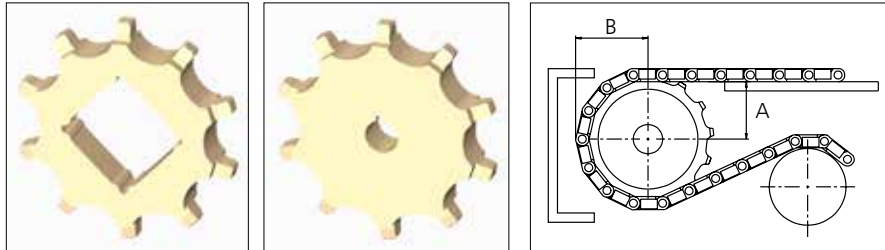
uni Flex L-ASB R2.2	
<b>A</b>	min. 1.5 x W
<b>B</b>	min. 3.2 x W
<b>C</b>	min. 2.2 x W
<b>D</b>	min. 2.0 x W
<b>E</b>	min. 2.0 x W
<b>F</b>	min. 8.9 x W
<b>G</b>	min. 8.4 x W

For min. conveyor dimensions please refer to sketch and diagram.

## Sprocket

No. of teeth	Bore size								Overall diameter		Pitch diameter		Hub diameter		Dimension A		Dimension B		Single row/Two way	Machined
	Pilot Bore	in	1.00	1.18	1.25	1.50	1.57	2.50												
	mm	25.4	30.0	31.8	38.1	40.0	63.5	mm	in	mm	in	mm	in	mm	in	mm	in			
<b>Z08</b>	✓		●	●			●		134.6	5.30	131.5	5.18	107.6	4.23	54.4	2.14	74.9	2.95	✓	✓
<b>Z10</b>	✓		●	●	●		●		168.3	6.63	164.0	6.46	141.3	5.56	71.4	2.81	90.8	3.57	✓	✓
<b>Z12</b>	✓		●	●	●	●	●	■	203.5	8.01	196.5	7.74	176.5	6.94	88.2	3.47	106.8	4.20	✓	✓
<b>Z15</b>	✓		●	●	●	●	●	■	253.4	9.98	245.4	9.66	226.4	8.91	113.2	4.46	131.0	5.16	✓	✓

### ■ Machined sprocket ● Machined sprocket



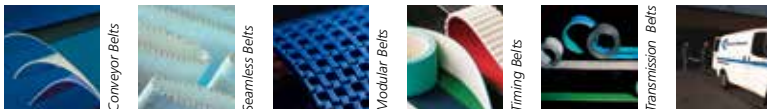
Non standard material and color: See uni Material and Color Overview.

Other sprocket sizes are available upon request  
 Two-part sprocket are available upon request  
 Other bore sizes are available upon request  
 uni Retainer Rings: See uni Retainer Ring data sheet  
 Width of tooth = 15.0 mm (0.59 in)  
 Width of sprocket = 30.0 mm (1.18 in)

Max. load per sprocket shown does not take bore size into account.  
 Please also ensure that sufficient size shaft is chosen for corresponding load.

For correct sprocket position: See uni Assembly Instructions for uni Flex L-ASB.  
 For more detailed sprocket information, contact Customer Service.

uni Flex L-ASB 47% Open Radius 2.2/180516



Expert advice, quality solutions and local service for all your belting needs  
[www.ammeraalbeltech.com](http://www.ammeraalbeltech.com)

**Ammeraal Beltech Modular A/S**  
 Hjulmagervej 21  
 DK-7100 Vejle

T +45 7572 3100  
 F +45 7572 3348  
 admin@unichains.com  
 www.unichains.com

This information is subject to alteration due to continuous development. Ammeraal Beltech will not be held liable for the incorrect use of the above stated information. This information replaces previous information. All activities performed and services rendered by Ammeraal Beltech are subject to general terms and conditions of sale and delivery, as applied by its operating companies.