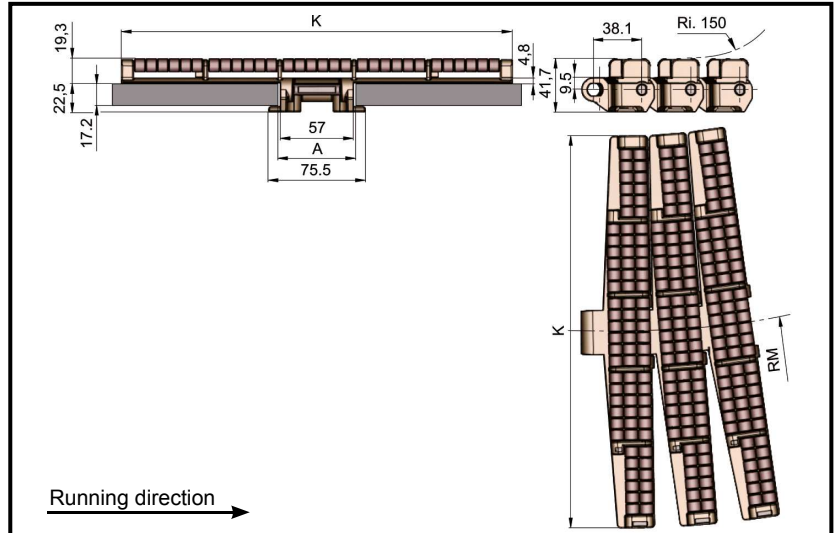
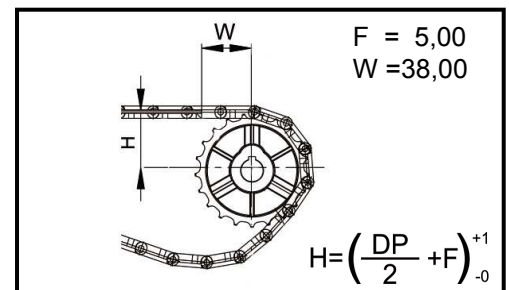


# SERIE 882 TAB BP



COD.	K		Kg/m	Open Surface	RM (mm)	*Ri (mm)
	mm	inch				
** 882 BP 037TAB	95,3	3,75	3,90	0%	610	150
** 882 BP 045TAB	114,3	4,50	4,10			
** 882 BP 075TAB	190,5	7,50	5,05			
** 882 BP 100TAB	254,0	10,00	5,86			
** 882 BP 120TAB	304,8	12,00	6,87			

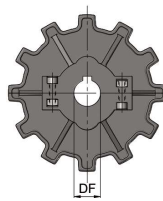


\* Ri: Back-flex Radius

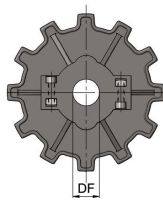
** Prefix	Chain material	Color	Ø Pin (mm)	Standard Pin Material	Minimum Temperature	Maximum Temp.		TT N	FDA Approval
						Dry enviroment	Wet enviroment		
LF ●	Acetal-LF	Brown	6,78	SS304	-40	+85	+70	3900	✓

## Available types

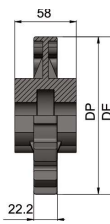
Z	Ø De	Ø Dp
12	148,5	147,2



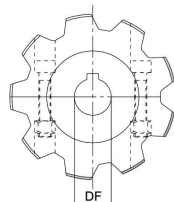
Split Sprocket



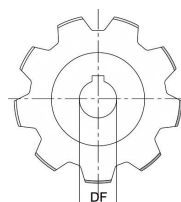
Split Idler Wheel



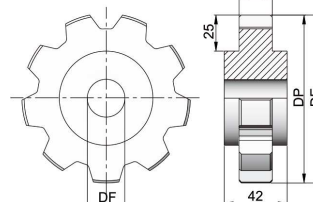
Z	Ø De	Ø Dp
9	112,5	111,4
10	124,9	123,4
11	136,4	135,2
12	148,5	147,2



Split Drive Sprocket



Solid Sprocket



Solid Idler Wheel

## Remarks

- Standard packaging 1,52m 5ft.
- ● Made to order