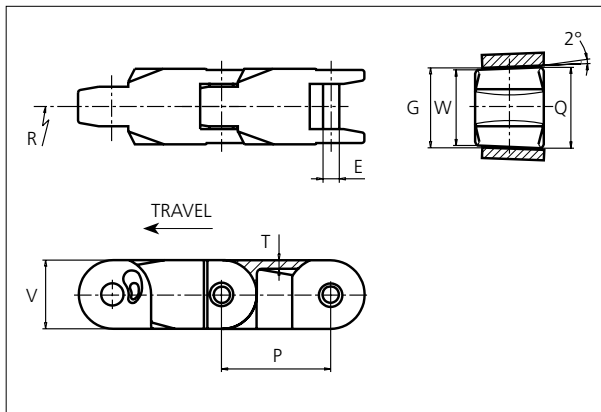




# uni Flex Plastic Chain

Series **uni 2500** Type -



## uni Flex Plastic Chain

Side flexing chain  
Pitch: 63.5 mm (2.50 in)  
Backflex radius:  
75.0 mm (3.00 in)  
Permissible tensile strength:  
POM material:  
7500 N (1686 lbf)  
  
Standard shipping lengths:  
boxes of 96 links  
= 6.096 m (20.0 ft)

E		G		P		Q		T		V	
mm	in	mm	in	mm	in	mm	in	mm	in	mm	in
9.5	0.37	46.4	1.83	63.5	2.50	47.0	1.85	5.0	0.20	40.0	1.57

All dimensions are for chains in POM material.

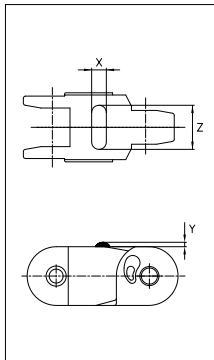
Width (W)		Material & color	Pin material	Weight		Min. radius (R)	
mm	in			kg/m	lb/ft	mm	in
44.0	1.73	POM-D <b>W</b>	<b>SS304</b>	2.0	1.34	600.0	23.62

Non standard material and color: See uni Material and Color Overview.

Non standard pin material: See uni Material and Color Overview.

## Accessories

### Rubber Top/NON STANDARD



When ordering, please state the required distance between the Rubber Top.

Other Non Standard rubber profiles:  
See uni Rubber Profile Overview


Link material	Rubber material	Z		X		Y	
		mm	in	mm	in	mm	in
POM-D <b>W</b>	05 <b>I</b>	30.0	1.18	10.0	0.39	3.0	0.12

STANDARD

SIDE FLEXING

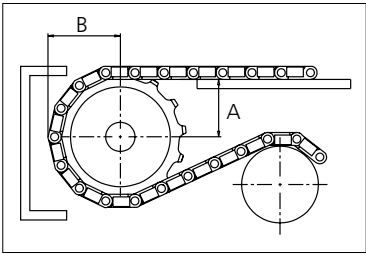
PITCH 63.5 MM/2.50 IN

Sprocket

No of teeth	Pitch diameter		Overall-diameter		Min. ø bore		Max. ø bore		Hub-diameter		Dimension A		Dimension B		 Machined PA6
	mm	in	mm	in	mm	in	mm	in	mm	in	mm	in	mm	in	
Z6	126.7	4.99	136.0	5.35	20.00	0.8	40.00	1.6	63.00	2.5	35.00	1.4	83.30	3.3	✓
Z8	165.7	6.52	176.0	6.93	20.00	0.8	40.00	1.6	73.50	2.9	56.70	2.2	102.80	4.0	✓
Z15	305.3	12.02	317.4	12.50	20.00	0.8	40.00	1.6	73.50	2.9	129.40	5.1	172.70	6.8	✓

Non standard material and color:  
See uni Material and Color Overview.

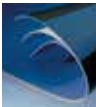
Machined sprocket



Please ensure that sufficient size shaft and keyway are chosen for corresponding load.

Other sprocket sizes are available upon request  
Width of tooth: 11.0 mm/0.43 in  
Width of sprocket: 42.3 mm/1.66 in  
uni Retainer Rings: See uni Retainer Ring data sheet

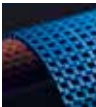
uni 2500/2016.06.21



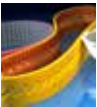
Synthetic Belts



Endless Woven Belts



Modular Belts



Engineered Belts



Homogeneous Belts



Fabrication & Service

Expert advice and quality solutions  
for all your belting needs.  
ammeraalbeltech.com

**Ammeraal Beltech Modular A/S**  
Hjulgagervej 21  
DK-7100 Vejle  
T +31 7572 3100

ammega.com

This information is subject to alteration due to continuous development. Ammeraal Beltech will not be held liable for the incorrect use of the above stated information. This information replaces previous information. All activities performed and services rendered by Ammeraal Beltech are subject to general terms and conditions of sale and delivery, as applied by its operating companies.

Member of Ammega Group.