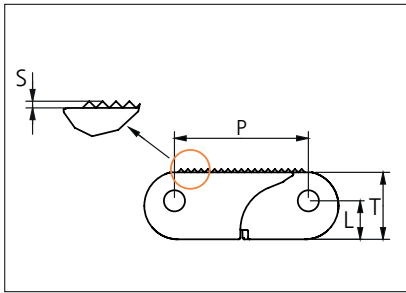




# Plastic Modular Belt

Series **uni ACB** Type **Rough**



Straight running belt  
 Nominal pitch: 40.0 mm (1.57 in)  
 Surface type: Rough  
 Surface opening: Closed  
 Backflex radius: 60.0 mm (2.36 in)  
 Pin diameter: 6.0 mm (0.24 in)

<b>Belt material &amp; color</b>	POX FR <b>EG</b>		<b>mm</b>	<b>in</b>		<b>mm</b>	<b>in</b>
<b>Pin and lock material &amp; color</b>	PBT <b>LG</b> PP <b>E</b>	<b>P (Nominal)</b>	40.0	1.57	<b>S</b>	0.8	0.03
		<b>L</b>	11.5	0.45	<b>T</b>	20.0	0.79

Non standard material and color: See uni Material and Color Overview.  
 Safety edges with orange or yellow edge links mounted on alternating pitches along both belt edges are optional.  
 Alternative pin and lock systems and materials: Contact Customer Service.

Belt width		Permissible tensile force (Belt/pin material)				Belt weight (Belt/pin material)				*Min No drive sprocket per shaft	Number of wear strips (min no)	
		POX-FR/PBT		POX-FR/SS		POX-FR/PBT		POX-FR/SS			Carry (pcs)	Return (pcs)
mm	in	N	lbf	N	lbf	Kg/m	lb/ft	Kg/m	lb/ft			
204	8.0	14280	3210	16320	3669	2.5	1.69	3.4	2.32	2	2	2
306	12.0	21420	4815	24480	5503	3.8	2.53	5.2	3.48	3	3	2
407	16.0	28490	6405	32560	7319	5.0	3.36	6.9	4.62	3	3	2
509	20.0	35630	8010	40720	9154	6.3	4.21	8.6	5.78	4	4	2
611	24.1	42770	9615	48880	10988	7.5	5.05	10.3	6.94	5	5	3
713	28.1	49910	11220	57040	12823	8.8	5.89	12.0	8.10	5	5	3
814	32.0	56980	12809	65120	14639	10.0	6.73	13.8	9.25	6	6	3
916	36.1	64120	14414	73280	16473	11.3	7.57	15.5	10.40	7	7	4
1018	40.1	71260	16019	81440	18308	12.5	8.42	17.2	11.56	7	7	4
1120	44.1	78400	17624	89600	20142	13.8	9.26	18.9	12.72	8	8	4

1984	78.1	138880	31220	158720	35680	24.4	16.40	33.5	22.53	14	14	7
3002	118.2	210140	47239	240160	53988	36.9	24.82	50.7	34.10	21	21	11
4019	158.2	281330	63243	321520	72278	49.4	33.22	67.9	45.65	27	27	14

Additional standard belt widths are available in steps of 50.7 mm (2.00 in). Additional non-standard belt widths are available in steps of 16.9 mm (0.67 in).  
 Additional standard belt widths are available in steps of 50.7 mm (2.00 in). Additional non-standard belt widths are available in steps of 16.9 mm (0.67 in).  
 Additional standard belt widths are available in steps of 50.7 mm (2.00 in). Additional non-standard belt widths are available in steps of 16.9 mm (0.67 in).  
 General belt tolerance is +0/-0.4% at 23°C/73°F and 50% RH. For exact belt width contact Customer Service. Non standard belt width on request.  
 \*Max. Load per Drive Sprocket. Belt material: POX-FR 8000 N (1799 lbf).  
 = Single Link



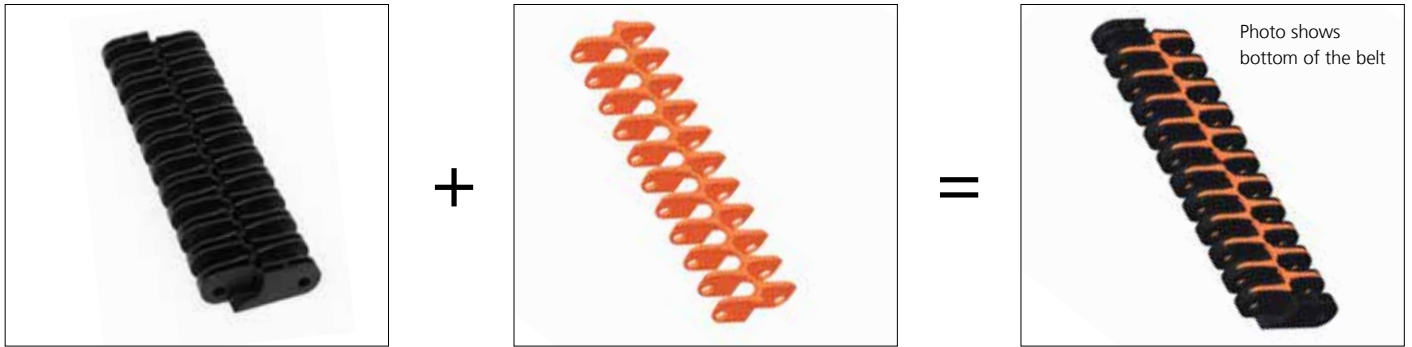
STANDARD

STRAIGHT RUNNING

PITCH 40.0 MM/1.57 IN

## Accessories

### Top/Bottom Insert



Type	Insert material & color	Weight	
		kg/m <sup>2</sup>	lb/ft <sup>2</sup>
Wheel Plate	POM DK <span style="color: orange;">O</span>	3.81	0.79

Contact area/wear surface of belt will increase from 25% to 49% by the use of inserts.

## Accessories

### Top/Bottom Insert

EC insert in uni ACB 2% Rough type can be build in to uni ACB Closed to create an electrical conductive belt.



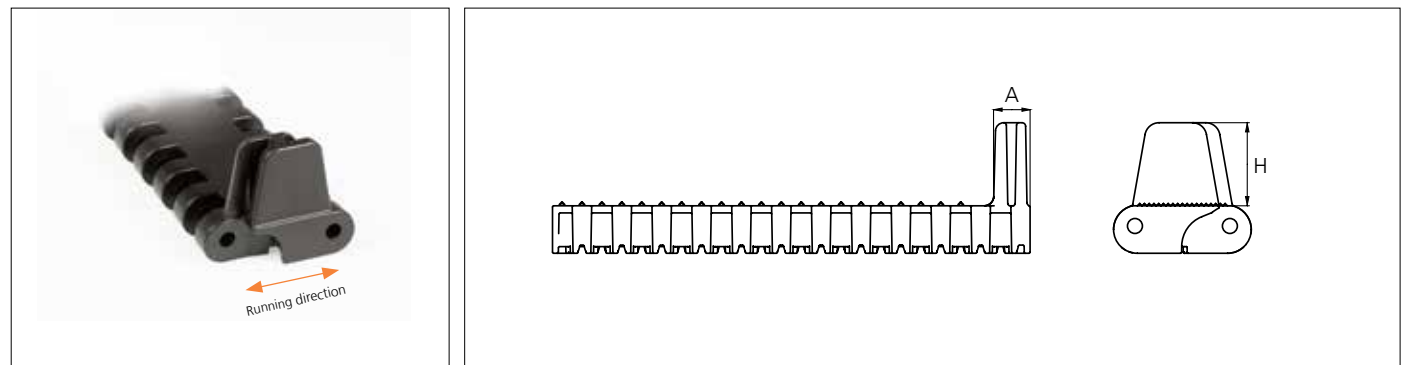
Type	Insert material & color	Weight	
		kg/m <sup>2</sup>	lb/ft <sup>2</sup>
Electrical Conductive	POM-EC <span style="background-color: black; color: white;">K</span>	2.29	0.47

Contact area/wear surface of belt will increase from 25% to 38% by the use of inserts.

POM-EC and POX-FREC holds a surface resistivity of 1x10<sup>6</sup> Ohm according to IEC 60093/ASTM D257.

## Accessories

### Side Guard

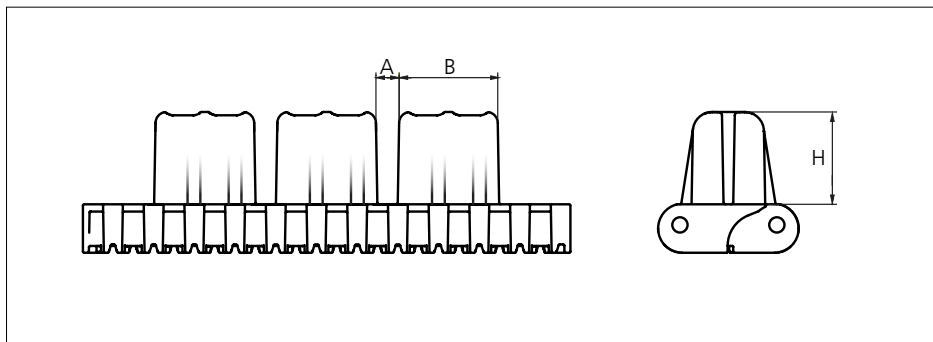
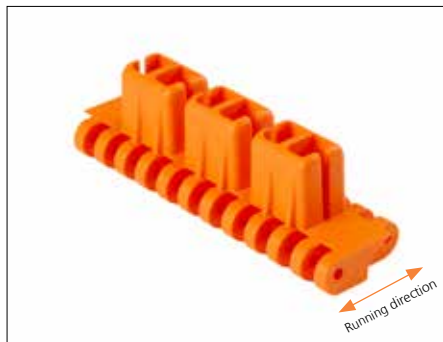



Type	Flight material & color	A		H		Link size	Width	
		mm	in	mm	in		mm	in
Side Guard	POM-NL <span style="background-color: black; color: white;">K</span>	15.4	0.43	35.0	1.38	K800	203.0	8.00

Backflex radius when flights are used: 120.0 mm (4.72 in).

## Accessories

### Flight

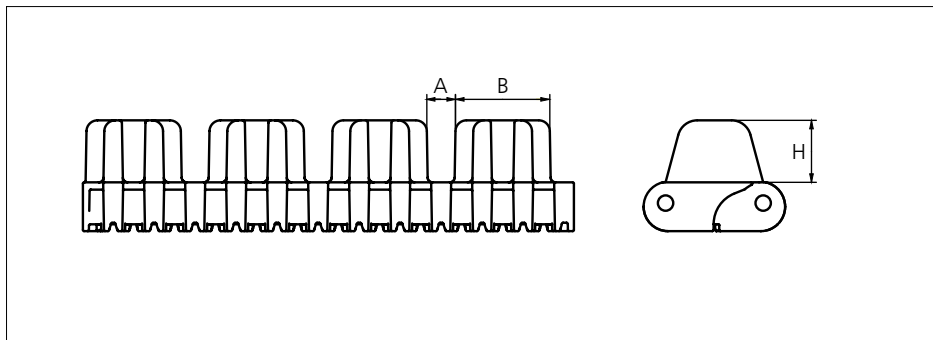



Type	Flight material & color	A		B		H		Link size	Width	
		mm	in	mm	in	mm	in		mm	in
Car Pusher	POM-NL 	9.6	0.38	40.7	1.60	38.1	1.50	K800	203.0	8.00

Backflex radius when flights are used: 120.0 mm (4.72 in).

## Accessories

### Flight

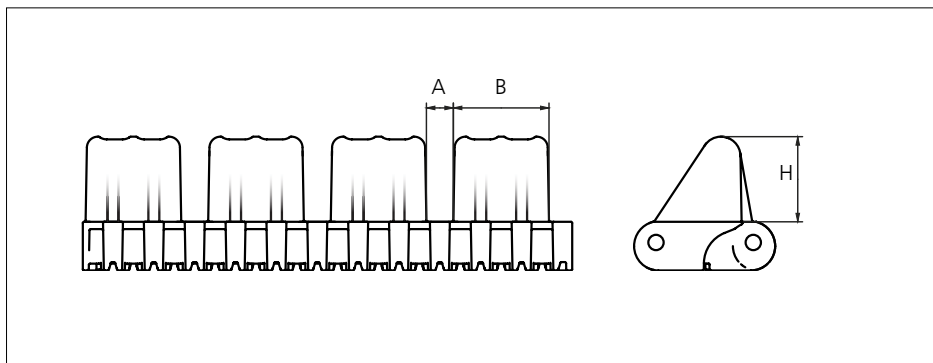



Type	Flight material & color	A		B		H		Link size	Width	
		mm	in	mm	in	mm	in		mm	in
Car Pusher	POM-NL 	11.7	0.46	38.7	1.53	25.4	1.00	K800	203.0	8.00

Backflex radius when flights are used: 120.0 mm (4.72 in).

## Accessories


### Flight



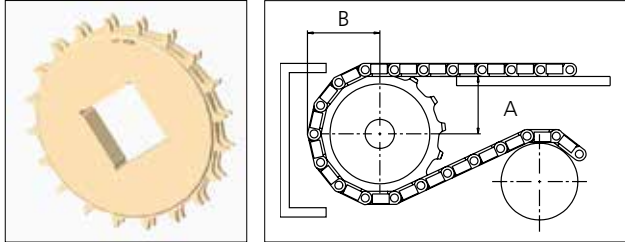
Type	Flight material & color	A		B		H		Link size	Width	
		mm	in	mm	in	mm	in		mm	in
Car Pusher	POM-NL 	11.0	0.43	39.0	1.54	35.0	1.38	K800	203.0	8.00

Backflex radius when flights are used: 120.0 mm (4.72 in).

## Sprocket

No of teeth	Bore size					Overall diameter		Pitch-diameter		Hub-diameter		Dimension A		Dimension B		Double row/One way	Machined	 PAG
	Pilot bore	in	2.36	3.54	3.54													
		mm	60.0	90.0	120.0	mm	in	mm	in	mm	in	mm	in					
Z16	✓		■	■		213.0	8.4	205.4	8.1	175.8	6.9	89.1	3.5	110.9	4.4	✓	✓	
Z20	✓		■	■		264.2	10.4	256.0	10.1	227.9	9.0	114.8	4.5	136.3	5.4	✓	✓	

### Machined sprocket



Non standard material and color:  
See uni Material and Color  
Overview.

Other sprocket sizes are available upon request.  
Two-part sprockets are available upon request.  
Other bore sizes are available upon request.  
uni Retainer Rings: See uni Retainer Ring data sheet  
Width of single tooth = 6.5 mm (0.25 in)  
Width of sprocket = 33.2 mm (1.31 in)

Max load per sprocket shown does not take bore size into account.  
Please also ensure that sufficient size shaft is chosen for corresponding load.

For correct sprocket position: See uni Assembly Instructions for uni ACB.  
For more detailed sprocket information. contact Customer Service.



**Expert advice and quality solutions  
for all your belting needs.**  
ammeraalbeltech.com

**Ammeraal Beltech Modular A/S**  
Hjulgagervej 21  
DK-7100 Vejle  
T +31 7572 3100

**ammerga.com**

This information is subject to alteration due to continuous development. Ammeraal Beltech will not be held liable for the incorrect use of the above stated information. This information replaces previous information. All activities performed and services rendered by Ammeraal Beltech are subject to general terms and conditions of sale and delivery, as applied by its operating companies.