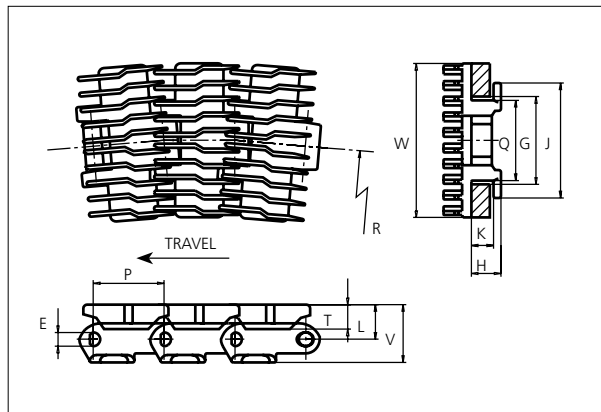


# Special Plastic Chain

Series **uni 882** Type **Rib Flex**



## Special Chains

Side flexing chain

Pitch: 38.1 mm (1.50 in)

Backflex radius:

75.0 mm (3.00 in)

Permissible tensile strength:

POM material:

4000 N (899 lbf)

Standard shipping lengths:

boxes of 80 links

= 3.048 m (10.0 ft)

E		G		H		J		K		L		P		Q		T		V	
mm	in	mm	in	mm	in	mm	in	mm	in	mm	in	mm	in	mm	in	mm	in	mm	in
8.7	0.34	59.5	2.34	22.2	0.87	76.20	3.00	17.5	0.69	19.7	0.78	38.1	1.50	57.2	2.25	15.0	0.59	37.0	1.46

All dimensions are for chains in POM material.

Width (W)			Recommended material & color	Recommended pin material	Weight		min. radius R	
	mm	in			kg/m	lb/ft	mm	in
<b>K600</b>	147.4	5.80	POM-LF <b>BR</b>	<b>SS304</b>	2.4	1.61	610.0	24.02

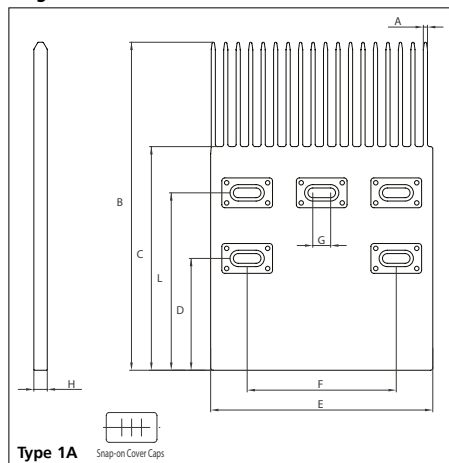
Non standard material and color: See uni Material and Color Overview.

Non standard pin material: See uni Material and Color Overview.

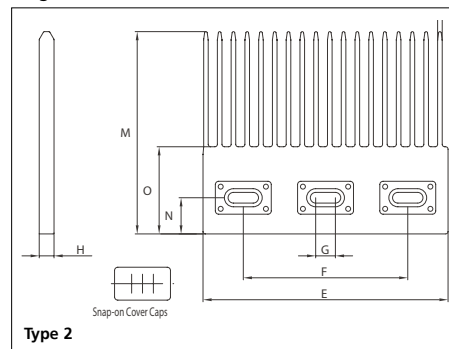
## Accessories

### Finger plates

#### Single Sided



#### Single Sided

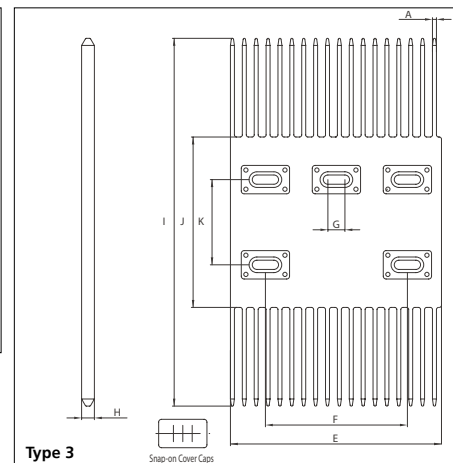


Material for finger plates: POM-LF **BR**

Non standard material and color:

See uni Material and Color Overview.

#### Double Sided



For the ribbed versions of uni special chains finger plates are available to facilitate product transfer between two conveyors.

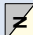
The finger plates are supplied with cover caps to close the screw holes. The cover caps can easily be removed with a screw driver.

A		B		C		D		E		F		G		H	
mm	in	mm	in	mm	in	mm	in	mm	in	mm	in	mm	in	mm	in
2.8	0.11	220.0	8.66	150.0	5.91	75.0	2.95	149.0	5.87	100.0	3.94	12.0	0.47	9.0	0.35

I		J		K		L		M		N		O		-	
mm	in	mm	in	mm	in	mm	in	mm	in	mm	in	mm	in	mm	in
259.0	10.20	120.0	4.72	60.0	2.36	119.0	4.69	123.0	4.84	22.0	0.87	53.0	2.09	-	-

## Sprocket

No of teeth	Pitch diameter		Overall-diameter		Min. ø bore		Max. ø bore		Hub-diameter		Dimension A		Dimension B		Molded PA6 LG	Molded Cast Iron	Machined PA6 
	mm	in	mm	in	mm	in	mm	in	mm	in	mm	in	mm	in			
<b>Z9</b>	111.4	4.39	112.7	4.44	20.0	0.79	45.0	1.77	60.0	2.36	57.1	2.25	65.4	2.57	✓	✓	
<b>Z10</b>	123.3	4.85	125.0	4.92	20.0	0.79	45.0	1.77	65.0	2.56	63.4	2.50	71.3	2.81	✓	✓	
<b>Z11</b>	135.2	5.32	137.4	5.41	20.0	0.79	50.0	1.97	73.5	2.89	69.6	2.74	77.3	3.04	✓	✓	
<b>Z12</b>	147.2	5.80	150.6	5.93	20.0	0.79	50.0	1.97	73.5	2.89	75.8	2.98	83.3	3.28	✓	✓	
<b>Z15</b>	183.3	7.22	186.9	7.36	20.0	0.79	50.0	1.97	120.0	4.72	94.3	3.71	101.3	3.99		✓	✓

## Two part sprocket

No of teeth	Pitch diameter		Overall-diameter		Min. ø bore		Max. ø bore		Hub-diameter		Dimension A		Dimension B		Molded PA6 LG
	mm	in	mm	in	mm	in	mm	in	mm	in	mm	in	mm	in	
<b>Z9</b>	111.4	4.39	112.7	4.31	20.0	0.79	45.0	1.77	60.0	2.36	57.1	2.25	65.4	2.57	✓
<b>Z10</b>	123.3	4.85	125.0	4.81	20.0	0.79	45.0	1.77	65.0	2.56	63.4	2.50	71.3	2.81	✓
<b>Z11</b>	135.2	5.32	137.4	5.30	20.0	0.79	50.0	1.97	73.5	2.89	69.6	2.74	77.3	3.04	✓
<b>Z12</b>	147.2	5.80	150.6	5.79	20.0	0.79	50.0	1.97	73.5	2.89	75.8	2.98	83.3	3.28	✓

### Molded sprocket



### Cast iron sprocket



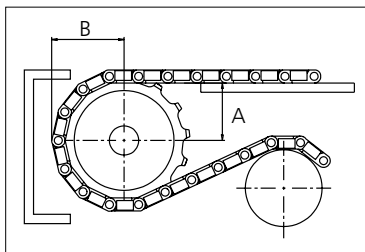
### Machined sprocket



### Molded two part sprocket



Non standard material and color:  
See uni Material and Color Overview.



Please ensure that sufficient size shaft and keyway are chosen for corresponding load.

Other sprocket sizes are available upon request  
Width of tooth: 22.20 mm/0.87 in  
Width of sprocket: 42.3 mm/1.70 in  
Width of cast iron sprocket: 41.3 mm/1.63 in  
uni Retainer Rings: See uni Retainer Ring data sheet

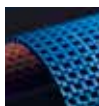
uni 882 Rib Flex/2021.10.22



Synthetic Belts



Endless Woven Belts



Modular Belts



Engineered Belts



Homogeneous Belts



Fabrication & Service

Expert advice and quality solutions  
for all your belting needs.  
ammeraalbeltech.com

**Ammeraal Beltech Modular A/S**  
Hjulgagervej 21  
DK-7100 Vejle  
T +31 7572 3100

**ammega.com**

This information is subject to alteration due to continuous development. Ammeraal Beltech will not be held liable for the incorrect use of the above stated information. This information replaces previous information. All activities performed and services rendered by Ammeraal Beltech are subject to general terms and conditions of sale and delivery, as applied by its operating companies.

Member of Ammega Group.