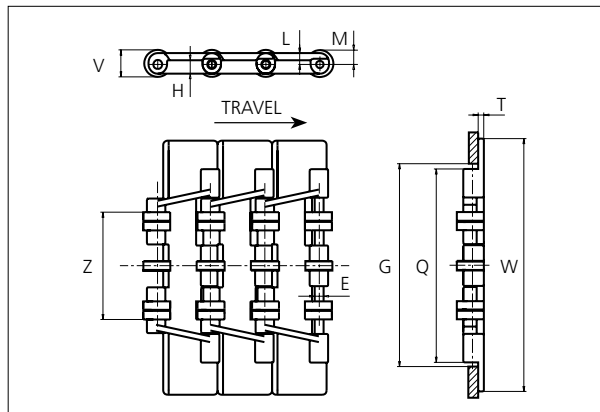
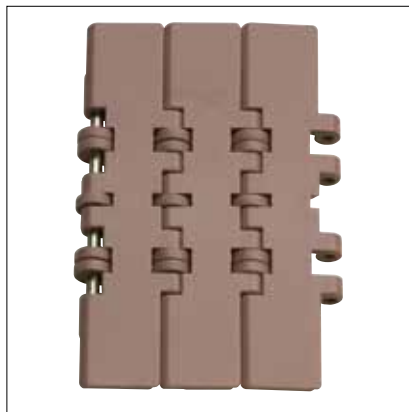


# Special Plastic Chain

Series **uni 821** Type **RO**



## Special Plastic Chain

Straight running chain

Pitch: 38.1 mm (1.50 in)

Backflex radius:

75.0 mm (3.00 in)

Permissible tensile strength:

POM material:

2500 N (562 lbf)

Standard shipping lengths:

boxes of 80 links

= 3.048 m (10.0 ft)

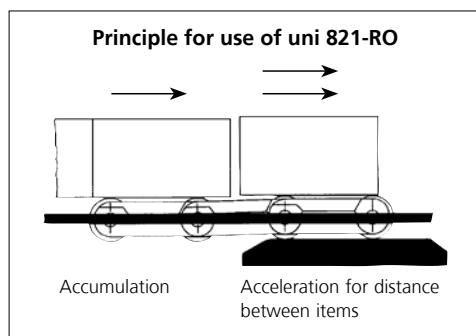
E		G		H		L		M		P		Q		T		V		Z	
mm	in	mm	in	mm	in	mm	in	mm	in	mm	in	mm	in	mm	in	mm	in	mm	in
6.4	0.25	140.0	5.51	9.5	0.37	8.0	0.31	9.5	0.37	38.1	1.50	136.5	5.37	5.0	0.20	19.0	0.75	75.0	2.95

All dimensions are for chains in POM material.

Width (W)			Recommended material & color	Recommended roller material & color	Recommended pin material	Weight	
	mm	in				kg/m	lb/ft
<b>K750</b>	190.5	7.50	POM-LF <b>BR</b>	POM-LF <b>BR</b>	<b>SS304</b>	2.6	1.75

Non standard material and color: See uni Material and Color Overview.

Non standard pin material: See uni Material and Color Overview.

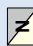



NON STANDARD

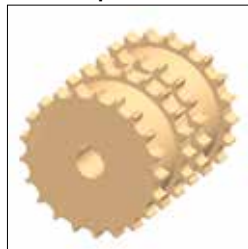
STRAIGHT RUNNING

PITCH 38.1 MM/1.50 IN

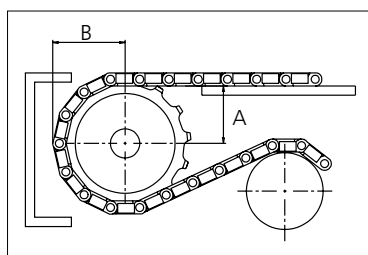
## Sprocket

No. of teeth	Pitch diameter		Overall diameter		Min. ø bore		Max. ø bore		Hub diameter		Dimension A		Dimension B		Machined 
	mm	in	mm	in	mm	in	mm	in	mm	in	mm	in	mm	in	
<b>Z21</b>	129.2	5.09	130.0	5.12	18.0	0.71	70.0	2.76	0	0	65.0	2.56	71.8	2.83	

### Molded sprocket



Non standard material and color:  
See uni Material and Color Overview.



**Please ensure that sufficient size shaft and keyway are chosen for corresponding load.**

Other sprocket sizes are available upon request  
Width of tooth: 13.8 mm/0.54 in  
Width of sprocket: 135.0 mm/5.30 in  
uni Retainer Rings: See uni Retainer Ring data sheet

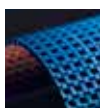
uni 821 RO/2016.06.24



Synthetic Belts



Endless Woven Belts



Modular Belts



Engineered Belts



Homogeneous Belts



Fabrication & Service

**Expert advice and quality solutions  
for all your belting needs.**  
ammeraalbeltech.com

**Ammeraal Beltech Modular A/S**  
Hjulumagervej 21  
DK-7100 Vejle  
T +31 7572 3100

**ammega.com**

This information is subject to alteration due to continuous development. Ammeraal Beltech will not be held liable for the incorrect use of the above stated information. This information replaces previous information. All activities performed and services rendered by Ammeraal Beltech are subject to general terms and conditions of sale and delivery, as applied by its operating companies.

Member of Ammega Group.