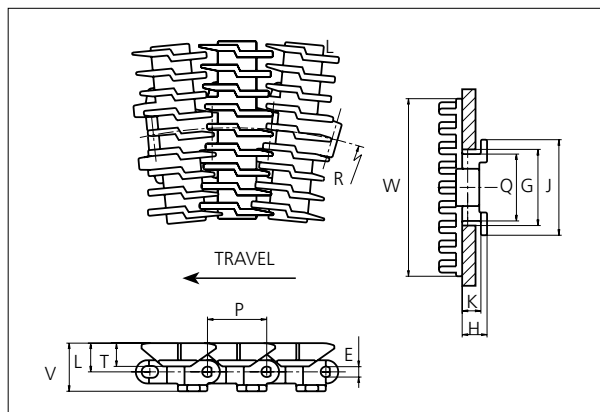


# Special Plastic Chain

Series **uni 880** Type **Rib**



## Special Plastic Chain

Side flexing chain

Pitch: 38.1 mm (1.50 in)

Backflex radius:  
35.0 mm (1.4 in)

Permissible tensile strength:

POM material:

1800 N (405 lbf)

Standard shipping lengths:

boxes of 80 links

= 3.048 m (10.0 ft)

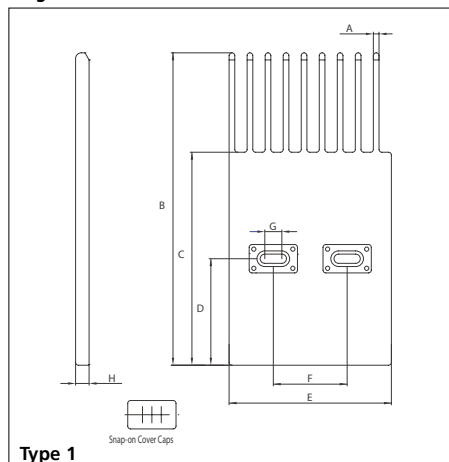
E		G		H		J		K		L		P		Q		T		V	
mm	in	mm	in	mm	in	mm	in	mm	in	mm	in	mm	in	mm	in	mm	in	mm	in
7.1	0.28	44.5	1.75	16.0	0.63	61.5	2.42	11.9	0.47	18.5	0.73	38.1	1.50	42.9	1.69	15.0	0.59	31.1	1.22

All dimensions are for chains in POM material.

## Accessories

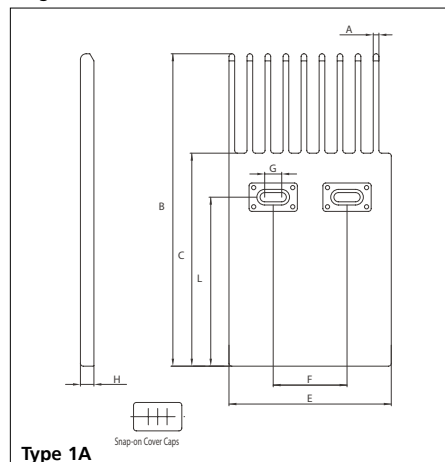
### Finger plates

#### Single Sided

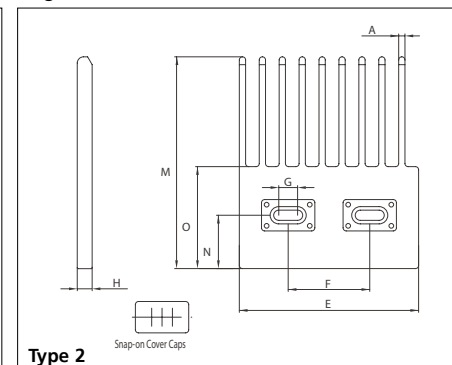


For the ribbed versions of uni special chains finger plates are available to facilitate product transfer between two conveyors. The finger plates are supplied with cover caps to close the screw holes. The cover caps can easily be removed with a screw driver.

#### Single Sided



#### Single Sided



**Material for finger plates:** POM-LF **BR**

Non standard material and color:

See uni Material and Color Overview.

A		B		C		D		E		F	
mm	in	mm	in	mm	in	mm	in	mm	in	mm	in
4.0	0.16	220.0	8.66	150.0	5.91	75.0	2.95	114.3	4.50	52.0	2.05

G		H		L		M		N		O	
mm	in	mm	in	mm	in	mm	in	mm	in	mm	in
12.0	0.47	9.5	0.37	119.0	4.69	135.0	5.31	34.0	1.34	65.0	2.56

## Sprocket

No. of teeth	Pitch diameter		Overall diameter		Min. ø bore		Max. ø bore		Hub diameter		Dimension A		Dimension B		Molded PA6 LG	Molded Cast Iron
	mm	in	mm	in	mm	in	mm	in	mm	in	mm	in	mm	in		
<b>Z9</b>	111.4	4.39	109.7	4.32	20.0	0.80	40.0	1.60	70.0	2.76	55.9	2.20	63.2	2.49	✓	✓
<b>Z10</b>	123.3	4.85	122.3	4.81	20.0	0.80	40.0	1.60	70.0	2.76	62.2	2.45	69.2	2.72	✓	✓
<b>Z11</b>	135.2	5.32	134.8	5.31	20.0	0.80	40.0	1.60	70.0	2.76	68.4	2.69	75.1	2.96	✓	✓
<b>Z12</b>	147.2	5.80	147.2	5.80	20.0	0.80	40.0	1.60	70.0	2.76	74.6	2.94	81.1	3.19	✓	✓
<b>Z15</b>	183.3	7.22	184.3	7.26	20.0	0.80	40.0	1.60	70.0	2.76	93.2	3.67	99.2	3.91	✓	✓

## Two part sprocket

No. of teeth	Pitch diameter		Overall diameter		Min. ø bore		Max. ø bore		Hub diameter		Dimension A		Dimension B		Molded PA6 LG
	mm	in	mm	in	mm	in	mm	in	mm	in	mm	in	mm	in	
<b>Z9</b>	111.4	4.39	109.7	4.32	20.0	0.80	40.0	1.60	70.0	2.76	55.9	2.20	63.2	2.49	✓
<b>Z10</b>	123.3	4.85	122.3	4.81	20.0	0.80	40.0	1.60	70.0	2.76	62.2	2.45	69.2	2.72	✓
<b>Z11</b>	135.2	5.32	134.8	5.31	20.0	0.80	40.0	1.60	70.0	2.76	68.4	2.69	75.1	2.96	✓
<b>Z12</b>	147.2	5.80	147.2	5.80	20.0	0.80	40.0	1.60	70.0	2.76	74.6	2.94	81.1	3.19	✓

### Molded sprocket



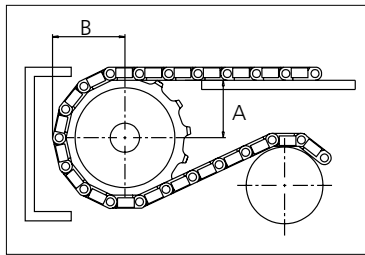
### Cast iron sprocket



### Molded two part sprocket



Non standard material and color:  
See uni Material and Color Overview.



Please ensure that sufficient size shaft and keyway are chosen for corresponding load.

Other sprocket sizes are available upon request

Width of tooth: 15.8 mm/0.62 in

Width of sprocket: 42.3 mm/1.67 in

Width of cast iron sprocket: 41.3 mm/1.63 in

uni Retainer Rings: See uni Retainer Ring data sheet

uni Idler: See uni Idler data sheet

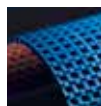
uni 880 Rib/2021.10.22



Synthetic Belts



Endless Woven Belts



Modular Belts



Engineered Belts



Homogeneous Belts



Fabrication & Service

Expert advice and quality solutions  
for all your belting needs.  
ammeraalbeltech.com

**Ammeraal Beltech Modular A/S**  
Hjulgagervej 21  
DK-7100 Vejle  
T +31 7572 3100

ammega.com

This information is subject to alteration due to continuous development. Ammeraal Beltech will not be held liable for the incorrect use of the above stated information. This information replaces previous information. All activities performed and services rendered by Ammeraal Beltech are subject to general terms and conditions of sale and delivery, as applied by its operating companies.

Member of Ammega Group.