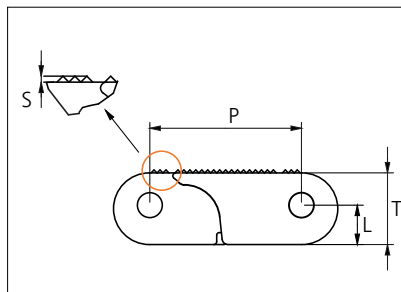




# Plastic Modular Belt

Serie **uni AMB** Type **Closed Rough (POM-NL)**



Straight running belt  
 Nominal pitch: 63.5 mm (2.50 in)  
 Surface type: Rough  
 Surface opening: Closed  
 Backflex radius: 100.0 mm (3.94 in)  
 Pin diameter: 9.0 mm (0.35 in)

STANDARD

<b>Belt material &amp; color</b>	POM NL <b>K</b>		<b>mm</b>	<b>in</b>		<b>mm</b>	<b>in</b>
<b>Pin and lock material &amp; color</b>	SS <b>G</b> PP <b>O</b>		<b>P (Nominal)</b>	63.5	2.50	<b>T</b>	33.0 1.30
			<b>L</b>	18.2	0.72	<b>S</b>	1.0 0.04

Belt width		Permissible tensile force (Belt/pin material)		Belt weight (Belt/pin material)		*Min No drive sprocket per haft	Number of wear strips (min no)	
		POM-NL/SS		POM-NL/SS			**Carry (pcs)	**Return (pcs)
mm	in	N	lbf	Kg/m	lb/ft			
153	6.0	27540	6191	5.3	3.54	2	2	2
306	12.0	55080	12382	10.5	7.07	3	3	2
458	18.0	82440	18533	15.7	10.58	4	4	2
611	24.1	109980	24724	21.0	14.12	5	5	3
764	30.1	137520	30914	26.3	17.65	6	6	3
916	36.1	164880	37065	31.5	21.16	7	7	4
1069	42.1	192420	43256	36.8	24.70	8	8	4
1222	48.1	219960	49447	42.0	28.23	9	9	5
1374	54.1	247320	55598	47.2	31.75	10	10	5
1527	60.1	274860	61789	52.5	35.28	11	11	6
1679	66.1	302220	67939	57.7	38.79	12	12	6
1832	72.1	329760	74130	63.0	42.33	13	13	7

STRAIGHT RUNNING

PITCH 63.5 MM/2.50 IN

Additional standard belt widths are available in steps of 152.5 mm (6.00 in). Additional non-standard belt widths are available in steps of 25.4 mm (1.00 in).

2906	114.4	523080	117588	99.9	67.14	20	20	10
------	-------	--------	--------	------	-------	----	----	----

Additional standard belt widths are available in steps of 152.5 mm (6.00 in). Additional non-standard belt widths are available in steps of 25.4 mm (1.00 in).

4894	192.7	880920	198031	168.3	113.08	33	33	17
------	-------	--------	--------	-------	--------	----	----	----

General belt tolerance is +0/-0.4% at 23°C/73°F and 50% RH. For exact belt width contact Customer Service. Non standard belt width on request.

\*\*Max. Load per Drive Sprocket. Belt material: Pom NL 15000 N (3372 lbf)

\*\*\*Max. Spacing between wear strips, Carry: 152.0 mm (6.00 in); Return: 304.0 mm (12.00 in).

= Single Link



## Accessories

### Top/Bottom Insert



+



=



Photo shows bottom of the belt

Type	Insert material & color	Weight	
		kg/m <sup>2</sup>	lb/ft <sup>2</sup>
Wheel Plate	POM NL <b>Y</b> PEI <b>G</b> POM DK <b>O</b>	4.7	0.97

Contact area/wear surface of belt will increase from 24% to 47% by the use of inserts.

### Top/Bottom Insert

EC insert in uni AMB 4% Rough type can be build in to uni AMB C Rough to create an electrical conductive belt.



+



=



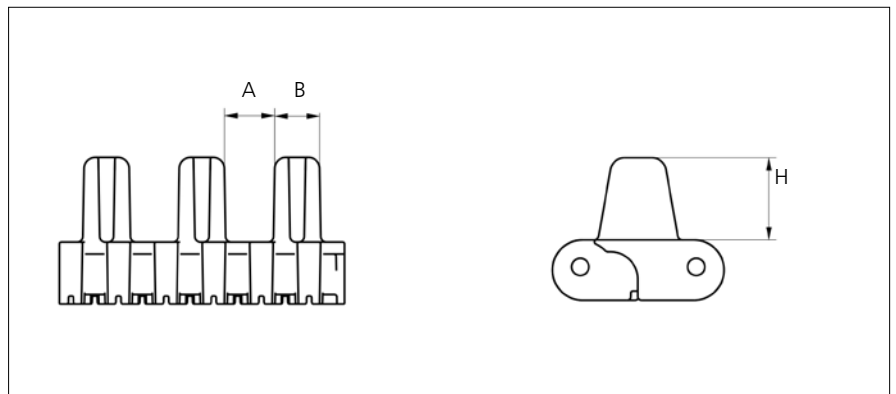
⚡ EC Grip surface located above the belt surface to ensure 'electro static discharge'

Type	Insert material & color	Weight	
		kg/m <sup>2</sup>	lb/ft <sup>2</sup>
Electrical Conductive	POM EC <b>K</b>	5.2	1.07

POM EC holds a surface resistivity of 1x10<sup>3</sup> Ohm according to IEC 60093/ASTM D257.

Contact area/wear surface of belt will increase from 24% to 47% by the use of inserts.


### Flight



Type	Flight material & color	A		B		H		Link size	Width	
		mm	in	mm	in	mm	in		mm	in
Car Pusher	POM NL <b>O</b>	25.5	1.00	25.3	0.99	30.0	1.18	K600	153.0	6.00
						45.0	1.77			
						58.0	2.32			

Backflex radius when flights are used: 120.0 mm (4.72 in).

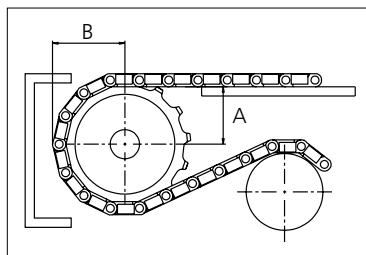
## Sprocket

No. of teeth	Bore size						Overall diameter		Pitch diameter		Hub diameter		Dimension A*		Dimension B		Double row/One way	 Machined
	Pilot Bore	in	2.36	2.5	3.54	4.72												
	mm	60.0	63.5	90.0	120.0	mm	in	mm	in	mm	in	mm	in	mm	in			
Z10	✓	■	■	■			211.2	8.31	205.9	8.09	149.0	5.87	79.5	3.13	117.2	4.61	✓	✓
Z13	✓	■	■	■	■		273.4	10.76	265.3	10.45	211.0	8.31	110.6	4.35	147.2	5.80	✓	✓
Z15	✓	■	■	■	■		314.5	12.38	305.4	12.02	252.0	9.92	131.1	5.16	167.3	6.59	✓	✓
Z20	✓	■	■	■	■		416.7	16.41	405.9	15.98	355.0	13.97	182.2	7.17	217.6	8.57	✓	✓

\*A-dimension for automotive applications use A = (B-29.8 mm/1.17 in).

Non standard material and color: See uni Material and Color Overview.

### ■ Machined sprocket

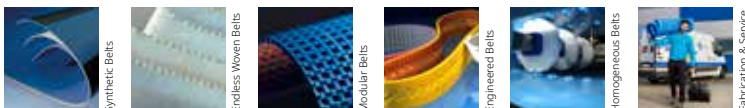


Other sprocket sizes are available upon request.  
 Two-part sprocket are available upon request.  
 Other bore sizes are available upon request.  
 uni Retainer Rings: See uni Retainer Ring data sheet  
 Width of single tooth = 9.0 mm (0.35 in)  
 Width of sprocket = 50.0 mm (1.97 in)

Max load per sprocket shown does not take bore size into account.  
 Please also ensure that sufficient size shaft is chosen for corresponding load.

For correct sprocket position: See uni Assembly Instructions for uni AMB.  
 For more detailed sprocket information, contact Customer Service.

uni AMB Closed Rough\_POM NL/2023.05.02



**Expert advice and quality solutions for all your belting needs.**

ammeraalbeltech.com  
 eptool.online

**Ammeraal Beltech Modular A/S**  
 Hjulmagervej 21  
 DK-7100 Vejle  
 T +45 7572 3100

**ammega.com**

This information is subject to alteration due to continuous development. Ammeraal Beltech will not be held liable for the incorrect use of the above stated information. This information replaces previous information. All activities performed and services rendered by Ammeraal Beltech are subject to general terms and conditions of sale and delivery, as applied by its operating companies.

Member of Ammega Group.