

Soliflex CB RS TPU/30 I. blue 24in FG 1 row

Article code: SFPU000809

General information

Product group	Soliflex
Main product feature	Positive drive, Chemical resistant, Wear resistant bottom side

Belt construction

Material	TPU-E
Reinforcement	Sealed Aramid Cord
Top side	smooth
Bottom side	matt
Color	Light blue

Characteristics

Food Grade (FG)	yes	EU 1935/2004, EU 10/2011; FDA; No
------------------------	-----	-----------------------------------

Technical data

Pitch			39.7 mm	1.56 in.
Hardness	ISO 868		95A Shore	
Force at 1% elongation	ISO 21181		3.3 N/mm	18.84 lbs/in.
Belt thickness			3 mm	0.12 in.
Weight			4.6 kg/m ²	0.94 lbs/ft ²
Operating temperature	continuous	from / to	-10 / 70 °C	14 / 158 °F
Minimum pulley diameter	flexing		124.5 mm	4.9 in.
	backflexing		250 mm	9.84 in.
Manufacturing width	maximum		610 mm	24.02 in.
	standard		610 mm	24.02 in.

Fabrication

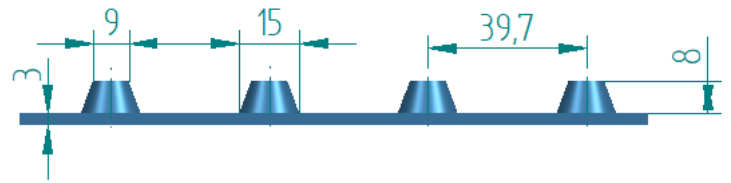
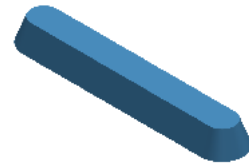
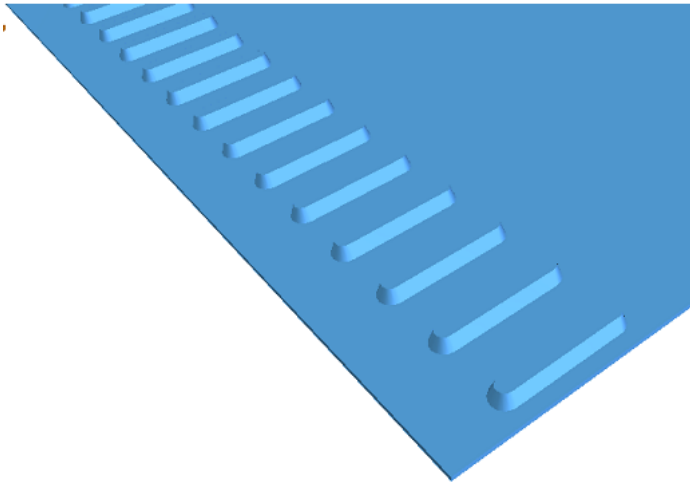
Recommended splice method	Butt weld
----------------------------------	-----------

Additional information

This sheet contains typical values, which apply to a temperature of approx. 20 °C (68 °F), unless otherwise stated, individual data may differ.

Keep the belt tension to a practical working minimum for maximum belt and machine life.

Store loose and wrapped in plastic. The allowable product temperature may vary.



Because of continuous development, the presented data is subject to alteration. This data replaces that included in previous publications. Ammeraal Beltech excludes any liability for the incorrect use of the above stated information. Subject to the general terms and conditions of sale and delivery, as applied by its operating companies, are all activities performed and services rendered by Ammeraal Beltech.