

Ultrascreen Belts Hygienic De-watering & Drying



Ammeraal Beltech is a leading manufacturer of process and conveyor belting with an established reputation for developing innovative solutions for belting applications.

In most industries and especially the food industry, Ammeraal Beltech has the application knowledge and product range to be a perfect partner.

With a full range of belting products Ammeraal Beltech is able to provide well considered solutions for all belting processes. For the processing of vegetables, fruits and fish, Ultrascreen Belts with polyester monofilaments are the proven solution.

Ultrascreen Belts are fabricated with lateral and longitudinal strips to provide stability. Executed with guide ropes for proper tracking and cleats for inclined conveying.

Main features

- Excellent drainage of liquids
- Special non-food blue color
- Excellent tracking properties
- Both metallic and non-metallic endlessing possible
- These belts are tough and have reliable running properties

Benefits

- High permeability resulting in high production output
- The right mesh opening for any product
- Improved production output because of very good product release
- Easy to clean and disinfect
- Excellent hygienic qualities, supports ISO 22000 requirements (previously HACCP)
- Reduced product contamination

Typical applications

- De-watering
- Washing and rinsing
- Drying and cooling

Innovation & Service in Belting

Applications

The main application of Ammeraal Beltech Ultrascreen Belts is the de-watering and drying of washed fresh cut vegetables. Various different mesh sizes of the screen material allow the perfect solution for each product size. Combined with a large open area the result is the highest possible production output.

Ultrascreen Belts are also used in cooling processes, recycling of used washing water, waste water treatment, filtering, sieving and squeezing.

General Technical Data

| | |
|--------------------|--|
| Mesh openings | 1000, 2000, 3000, 4000 µm (other on request) |
| Material | 100% polyester monofilament |
| Color | light blue |
| Stabilizing strips | PVC and Polyester Amtel |
| Air permeability | 3640-6540 L/dm ² /s @100Pa, depending on mesh size |
| Water permeability | 700 to 2060 mm/s, depending on mesh size |
| Open area | 25-55%, depending on mesh size |
| Max. width | 78.7 in |
| Food standards | EC1935/2004, FDA |
| Belt properties | determined by the properties of stabilising strips and accessories |

Recyclable version available



Ultrascreen Belt with cleats



Belt support return part



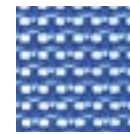
Ultrascreen Belt edge strips with pebbles



Ultrascreen Belt edge strips

Food compliance

Ultrascreen Belts meet the highest hygiene demands and comply with FDA and EC 1935/2004 requirements. All belt parts – being screen, stabilising strips, cleats or splice – are very easy to clean and support hygiene systems such as ISO 22000 (previously HACCP).



1000 µm



2000 µm



3000 µm



4000 µm

Various belt accessories can be applied:

- Cleats for inclined conveying
- Guide ropes to assist in tracking
- All belts have completely-closed belt edges for improved hygiene and safety

One-Stop Belt Shop

Knowing your process Industry and product knowledge are the foundation of an innovative and service-oriented organization

All your belting needs Ammeraal Beltech developed a wide range of belting and accessories to assist in improving hygiene levels to protect against food borne or disease causing bacteria

Just-in-time delivery World-wide distribution and large service network; skilled personnel are on call to repair and install belts using professional equipment, suitable for food plants

Fabrication Capabilities – USA

Reinforcement Strips

Light Blue PVC
1,18 in, 1,57 in, 1,97 in, 2,36 in wide

Cleats

Light Blue TPU
0,79 in, 1,38 in, 1,97 in, 2,95 in high

V-guides

Light Blue PVC
K10 & K13 Solid

(All profiles available in White PVC)

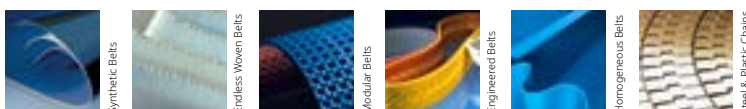
Lace

Ready Set Staple, Clipper, Alligator

Splice Ultrascreen by Lateral Strip

Prep Splice – Finger

80 x 20 x 90



Expert advice and quality solutions for all your belting needs.
ammeraalbeltech.com

Ammeraal Beltech
Ammeraal Beltech Inc.
Skokie, Illinois

This information is subject to alteration due to continuous development. Ammeraal Beltech will not be held liable for the incorrect use of the above stated information. This information replaces previous information. All activities performed and services rendered by Ammeraal Beltech are subject to general terms and conditions of sale and delivery, as applied by its operating companies.

Member of Ammega Group.

T +1 800 533 3765
info-us@ammeraalbeltech.com

ammega.com