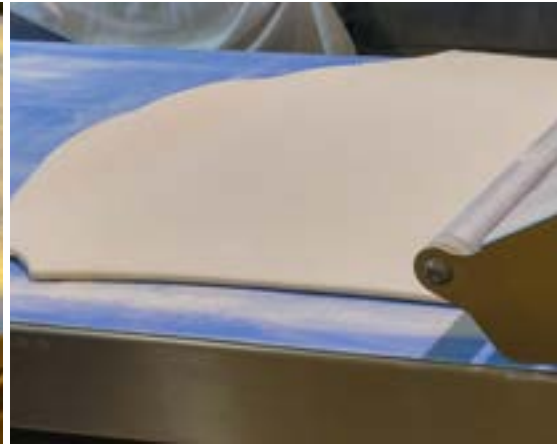
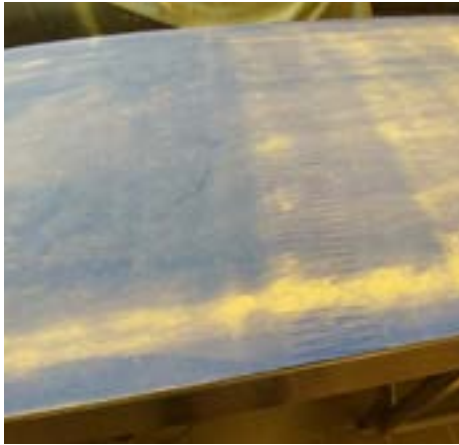


Dough Sheeter Synthetic Belts in Light Blue Colour



An innovative and cost effective solution for dough sheeters

Hygiene and Food Safety standards are being raised constantly. This is why Ammeraal Beltech never stops innovating in both the design and the manufacture of its process and conveyor belts.

Our new Ropanol Belt, specially designed for dough sheeter applications, provides many advantages:

- Reliable, long-lasting performance
- Enhanced Food Safety
- Easier contamination control
- Full compliance with EC 1935/2004, and FDA Food Safety standards

Improved Food Safety, Product Quality and Reduced Costs

Ropanol EM 8/2 0+00 light blue AS FG for dough sheeters.



New Ammeraal Beltech light blue belt



Traditional white belt

Features

Benefits

Light blue colour belt

- Improved Product Quality: better visual control of the distribution and calibration of flour over the belt's blue surface
- Improved Food Safety & Hygiene: easy detection of contamination
- Lower Costs: less waste due to optimization of flour dosage

Outstanding non-stick surface

- Excellent and long lasting product release properties
- Better cleanability compared to traditional white belts

Oil and flour resistant top cover

- Longer service life

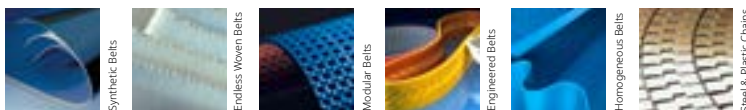
Technical data

Item code	Belt description	Belt thickness (mm)	Force at 1% elongation (N/mm)	Flexing diameter (mm)
572080	Ropanol EM 8/2 0+00 light blue AS FG	1.5	8	30

AS = Anti-Static, FG = Food Grade (EC and FDA)

Ammeraal Beltech has always been focused on hygiene and Food Safety; we have developed solutions such as **Homogeneous Belts**, **AntiMicrobial Belts**, **Non-fray Belts** and **Light Blue Belts**, giving you a clear advantage in the reduction of contamination risks.

Work with the best!



Expert advice and quality solutions for all your belting needs.
ammeraalbeltech.com

Ammeraal Beltech
Ammeraal Beltech Inc.
Skokie, Illinois

This information is subject to alteration due to continuous development. Ammeraal Beltech will not be held liable for the incorrect use of the above stated information. This information replaces previous information. All activities performed and services rendered by Ammeraal Beltech are subject to general terms and conditions of sale and delivery, as applied by its operating companies.

Member of Ammega Group.

T +1 800 533 3765
info-us@ammeraalbeltech.com

ammega.com