

Bolt-A-Cleat mechanical cleat attachments

- Do you need different cleats or do you want to replace worn-out cleats?
- You don't have to change the complete belt.
- Just change the cleats on your belt!

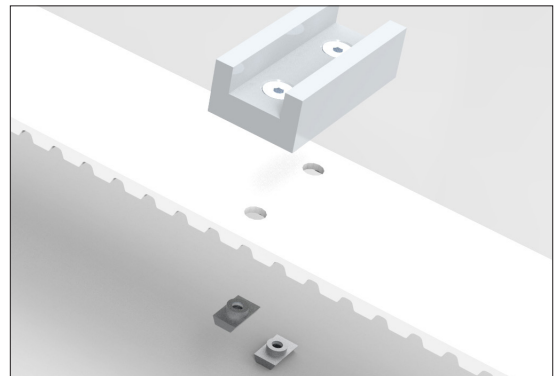
Bolt-A-Cleat – a simple system for bolting all sorts of cleats to a timing belt

Benefits:

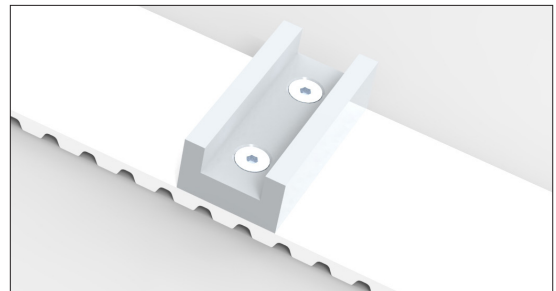
- Easy to change to a different cleat shape
- The narrow cleat base allows for small pulley diameters
- More precise positioning possible compared to welded cleats
- Available for many different tooth profiles
- Suitable for higher loads compared to welded cleats
- Runs over standard timing belt pulleys
- Available in stainless steel and brass

Bolt-A-Cleat, how does it work?

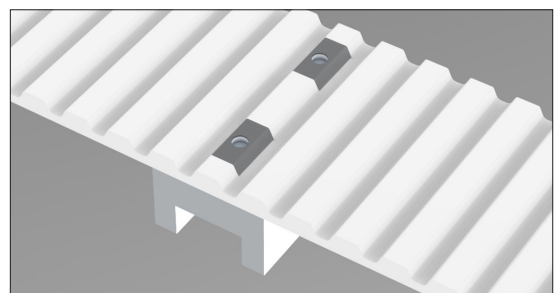
The plastic tooth is removed from the timing belt and replaced with a metal false tooth which has one or more threaded holes for bolting cleats.



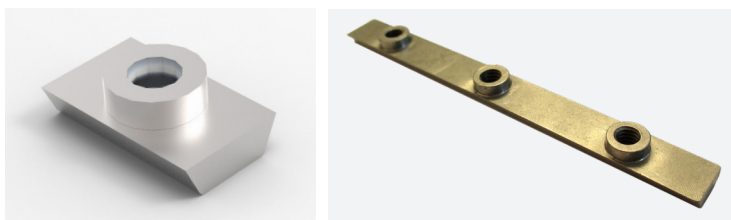
For mounting of cleats that cannot be welded to the timing belt



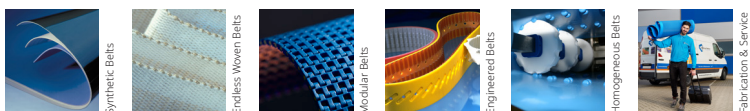
Easy replacement of damaged or worn cleats



Available in full tooth width or partial tooth inserts



Bolt-A-Cleat feasibility table		
Tooth profile	Thread	Belt width (mm)
T10	M3	50 - 150
AT10	M4	12 - 150
H	M4	½ - 4 inch
T20	M6	50 - 150
AT20	M8	50 - 150



Expert advice and quality solutions for all your belting needs.
ammeraalbeltech.com

Ammeraal Beltech
 P.O. Box 38
 1700 AA Heerhugowaard
 The Netherlands

T +31 (0)72 575 1212
info@ammeraalbeltech.com

ammerga.com