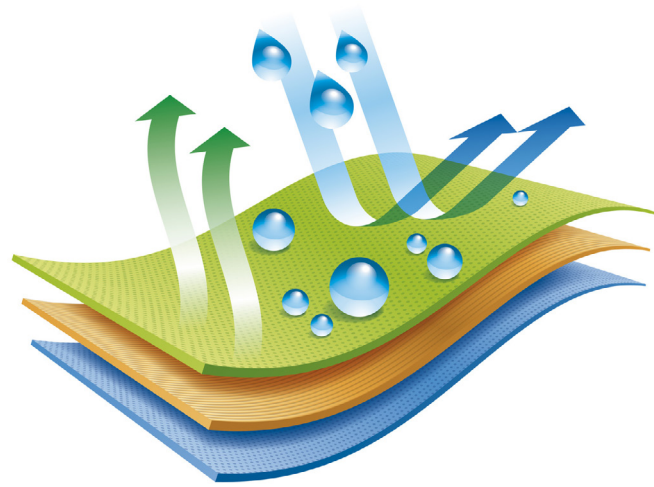
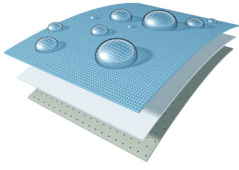


Coating & Lamination



High Performance Coating



With experience stretching back over 30 years, Ammeraal Beltech has been coating all types of flexible fabrics, up to 2,400 mm wide. Types such as polyester, polyamide, glass, cotton and aramide are coated using an air, or roller knife process.

The standard coatings of Silicones and Polyurethanes are applied, using a solvent or aqueous (solvent free) on to the required base. Additional layers can also be included, for example anti-static or flame retardant.

Coating applications:

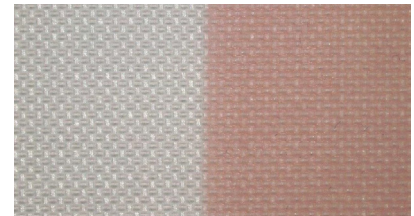
Product	Base layer	Coating mat.	Features/Benefits
Airbag fabrics	Polyester Polyamide	Silicone	Control air permeability, prevent from aging, protect from high temperatures
Balloon fabrics	Polyester Polyamide	Silicone	Prevent from aging, UV protection, high temperature resistance, surface protection of textiles
Release liner	Polyester Polyamide	Silicone	Good release properties, customized surface structures, multiple usage
Ski skins	Cotton Wool	Polyurethane Silicone	Adhesion layer
High performance coating solutions	Various textiles	Polyurethane Polyacrylate Polyethylene	Fluorescent and phosphorescent coating possible

Areas of application:

- Automotive Industry
- Aeronautical Industry
- Food Industry
- Timber and Chipboard Industry
- Printing and Paper Industry

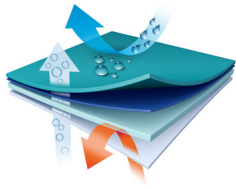


The first airbags were coated at the Ammeraal Beltech Switzerland plant in cooperation with the German automotive industry in 1997. This facility is now the largest airbag coating enterprise in Europe.



Ammeraal Beltech Switzerland coat and laminate textile fabric for precision balloon applications.

High Performance Lamination



Applying up to 50 bar pressure during a fully continuous production process, Ammeraal Beltech is not only linking complex material combinations or complex composites, it is also a development partner for modern, innovative or complex compositions of PU, TPE, rubber, fabrics, paper, steel, aluminium and non-woven materials.

Depending on the technical requirements, Ammeraal Beltech also offers its own formulations and foils produced by an in-house extrusion facility. Using reputable international raw material manufacturers our Research & Development team develops new products and liaises closely with technical universities in projects focused on customer-specific solutions.

Lamination applications:

Product	Base layer	Lamination mat.	Features/Benefits
Gas storage for aerospace/industrial applications	Polyester/Polyamide fabric	Thermoplastic	Cover layer for printing, aging protection, reduced air permeability, fungi resistance, media resistance can be integrated.
Ski skins	Cotton Wool	EVA hot melts	Constant Self-adhesive, multiple usage.
Door sills, Boot sills	Stainless steel	Adhesive film (Polyolefin, Polyamide, Polyurethane)	Multi or Monolayer, light weight (steel 0.15 mm – 0.50 mm). Lower process parameter as lacquer systems. Media resistance acc. Automotive norm.
Decorative applications	Stainless steel, Aluminium, pre-embossed material	Adhesive film, Decor fabric, fabric	Multi or Monolayer, light weight (steel/aluminium 0.15 mm – 0.50 mm). No prints.
OPW (One piece woven) airbag	Polyester Polyamide fabric	Adhesive film	Control air permeability, prevent from aging, protect from high temperatures.
Reinforced applications (e.g. airbag flap reinforcement, SUP -airboard)	Polyamide fabric	Adhesive film	Reinforced material, pre-heating fabric possible, post-heating possible.
Functional applications (e.g. isolator construction)	Polyamide fabric	Adhesive film	Light weight, low tension.
Organic sheets	Polypropylen Matrix, Glassfiber	Adhesive film for further layer (Fabric, fleece, steel, Thermoplastics, ...)	Composite material based on a polypropylene (PP) matrix. The product combines rigidity and breaking strength with a low weight. For the Automotive Industry usable, for the decor industry, printable and flame retardant.

Areas of application:

- Automotive Industry
- Sports and leisure sector
- Graphics and decor sector
- Architecture and interior design
- RAPPLON® High Performance Flat Belts



Ammeraal Beltech Switzerland coat adhesive film on more than 45'000kg **Steel Foils** for doorsills per year for premium vehicles



R&D partner and producer of semi-finished material for one of the biggest and innovative producer of **Ski Skins** in Europe.

Your innovative partner for High Performance Coating & Lamination

Swiss made Coating & Lamination

Ammeraal Beltech, one of the world's leading suppliers in the belting area, also has strong expertise in coating and laminating the most diverse technical fabrics and sheet materials.

Using double belt presses, lamination systems, extruders and mixers in a production space of over 8,000 m², Ammeraal Beltech Switzerland offers an almost endless choice of product combinations for the manufacture of simple or complex composites.

About us

The production site is located in Rapperswil-Jona Switzerland where the manufacturing of RAPPLON® High Performance Flat Belts is our competence since the late 50s. In 1993 a new production plant was built to apply new technologies and set new quality standards, considering future market demands.

Continuous R&D efforts and the close collaboration with expert partners are resulting in innovative solutions to our customers. Our aim is to satisfy our customers with unique belting solutions and easy to use joining tools, resulting in a complete solution package.

Ammeraal Beltech Switzerland is ISO certified since 1994. Our own quality management team in combination with regular audits make sure that all customer relevant processes are targeting for the highest product and service quality. Ammeraal Beltech maintains a leading position especially thanks to the customer-oriented approach of our highly motivated and flexible staff members.

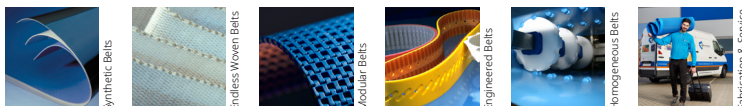


Manufacturing Unit Switzerland

Facts & Figures

- Manufacturing area 2800 m²
- Fabrication area 2000 m²
- Total area 8000 m²
- Employees 100
- Quality system ISO 9001: 2015
ISO 14001: 2015

**Contact us
to find a solution together!**



Expert advice and quality solutions for all your belting needs.
ammeraalbeltech.com

Ammeraal Beltech AG
Buechstrasse 37
8645 Rapperswil-Jona
Switzerland

This information is subject to alteration due to continuous development. Ammeraal Beltech will not be held liable for the incorrect use of the above stated information. This information replaces previous information. All activities performed and services rendered by Ammeraal Beltech are subject to general terms and conditions of sale and delivery, as applied by its operating companies.

T +41 55 225 35 35
ch-jon-lamination@ammega.com